



Marshall Road | | Cambridge | CB1 7TY

£2,700 Per Month

COOKE  
CURTIS  
& CO

## Key features



## Description

Beautifully presented and upgraded mid-terrace Victorian house located in a desirable residential location just off Hills Road. Well placed for access to the City Centre, Rail station, and Addenbrookes Hospital and within easy reach of the M11. Residents' parking scheme in place.



## Directions

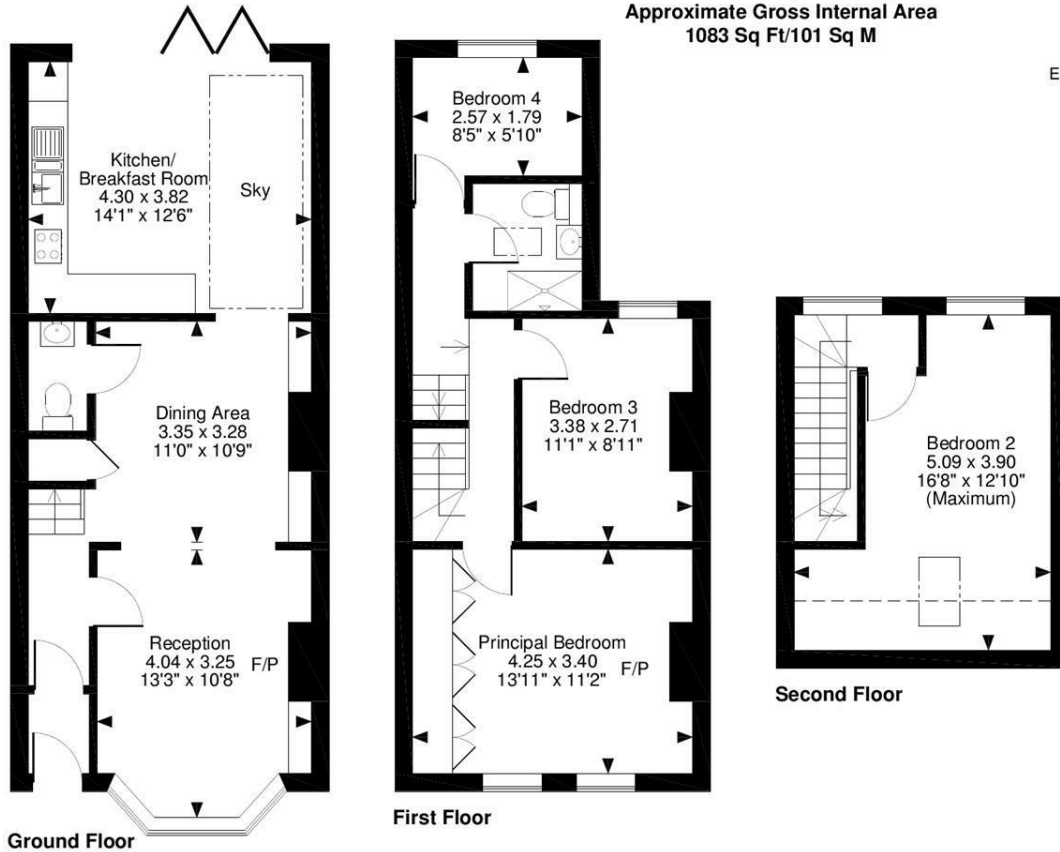
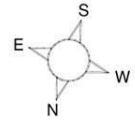


A delightful four bedroom, Victorian mid-terraced house, with lovely courtyard style garden, located on Marshall Road in Cambridge. Excellently positioned for access into the City, Addenbrookes Hospital and Cambridge Train Station.



# Floor plans

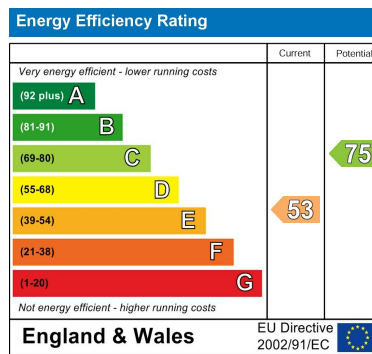
Marshall Road, Cambridge  
Approximate Gross Internal Area  
1083 Sq Ft/101 Sq M



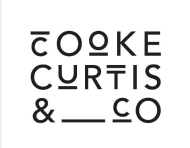
**FOR ILLUSTRATIVE PURPOSES ONLY - NOT TO SCALE**  
The position & size of doors, windows, appliances and other features are approximate only.

□ □ □ □ Denotes restricted head height

© ehouse. Unauthorised reproduction prohibited. Drawing ref. dig/8448430/AGI



Council Tax Band **D** EPC Rating **E**



40 High Street  
Trumpington  
Cambridge  
Cambridgeshire  
CB2 9LS  
01223 508050

hello@cookecurtis.co.uk  
cookecurtis.co.uk