



Capitol Square 4-6 Church Street, Epsom

Guide Price £315,000



Capitol Square

4-6 Church Street, Epsom

Modern 2-bed apartment in central Epsom with lift, allocated parking, stylish kitchen, spacious rooms, and NO ONWARD CHAIN. Minutes walk to shops, station, and amenities. Ready to move in. Ring to view!

Council Tax band: C

Tenure: Leasehold

EPC Energy Efficiency Rating: D

EPC Environmental Impact Rating: D

- No Onward Chain
- Modern Apartment
- Heart Of Epsom
- Lift Access
- Contemporary Kitchen
- Bright Reception
- Two Double Bedrooms
- Modern Bathroom
- Allocated Parking
- Minutes Walk To Shops & Station



An excellent opportunity to purchase a modern two-bedroom apartment offered with no onward chain, ideally positioned in the heart of Epsom. Set within a well-maintained development with lift access to all floors, this stylish home combines comfort with convenience.

The apartment features a bright and spacious reception room alongside a contemporary, well-planned kitchen fitted with integrated appliances and sleek units, ideal for both everyday living and entertaining. Both bedrooms are well-proportioned doubles with plenty of space for storage, while the modern bathroom is finished to a high standard with quality fixtures and fittings. A particular highlight is the allocated parking space, a valuable benefit in such a central location.

Just a short walk from Epsom's wide range of shops, cafés, restaurants, and the mainline station, the property is perfectly suited to commuters and those who enjoy an active town-centre lifestyle. Presented in excellent condition throughout, this apartment is ready to move into and would appeal to first-time buyers, downsizers, and investors alike.

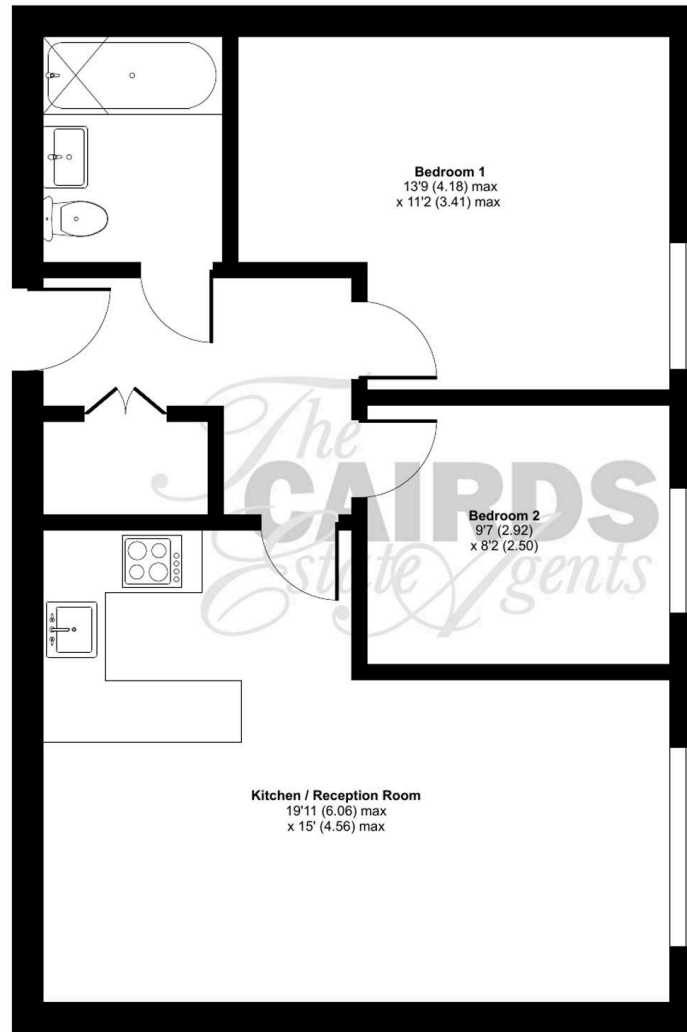
Early viewing is strongly advised to fully appreciate this impressive home.



Church Street, Epsom, KT17

Approximate Area = 609 sq ft / 56.5 sq

For identification only - Not to scale



FIRST FLOOR







Cairds The Estate Agents

Cairds The Estate Agents, 128-130 High Street - KT19 8BT

01372 743033 • homes@cairds.co.uk • www.cairds.co.uk