



BEAUFORT GREEN

Dancer Road, SW6

£2,650 Per month



A beautifully finished, one double bedroom split level apartment in the heart of Parsons Green. The property is located on the ground floor of an attractive period conversion.



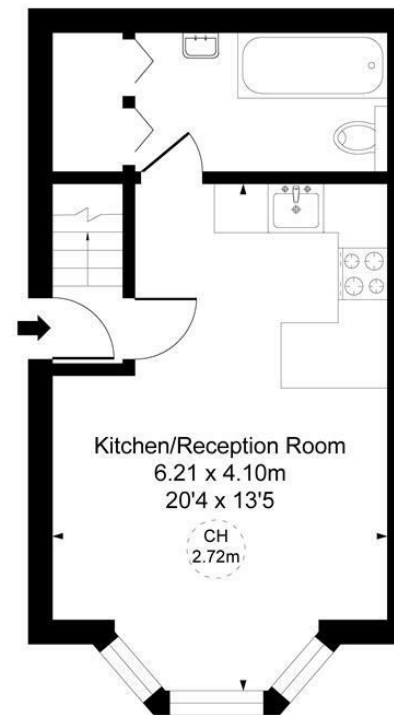


BEAUFORT GREEN

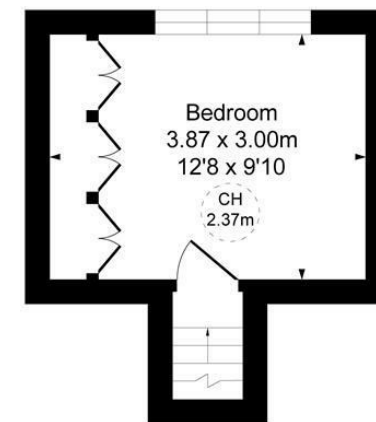


BEAUFORT GREEN

Dancer Road, SW6
Approximate Gross Internal Area
44.19 sq m / 476 sq ft
(CH = Ceiling Heights)



Ground Floor



First Floor

At a Glance.

- One Double Bedroom
- Split Level Ground Floor Apartment
- Prime Parsons Green Location
- Close Proximity to the Transport Links
- Period Conversion
- Available Immediately

This plan is not to scale. It is for guidance and not for valuation purposes.
All measurements and areas are approximate only, and have been prepared in accordance with the current edition of the RICS Code of Measuring Practice.

BEAUFORT GREEN

02074594100

charlie@beaufortgreen.co.uk

263 New Kings Road
London
SW16 1DB