



**hrt**  
herbert r thomas

# Rhiwfer House

Gilfach Road, Tonypandy

£475,000

Enhanced with AI

# Rhiwfer House

Gilfach Road, Tonypandy

A substantial 5/6 bedroom detached period property which retains a wealth of original characterful features. Situated in an elevated garden plot enjoying Views across the valley.

From Junction 34 of the M4 travel north along the dual carriageway signposted Llantrisant. Continue along the A4119 passing Talbot Green, The Royal Gilmor Hospital, Tonyrefail, At the roundabout in Edmunds town, Proceed on the A4119, after approx. 1/2 mile turn right onto Gelli Road. Proceed down the hill, take the 4th left on Kenry Street, at the T-junction turn left onto Gilfach Road. The property is at the top of this road on the right.

What3Words: proof.charity.flush

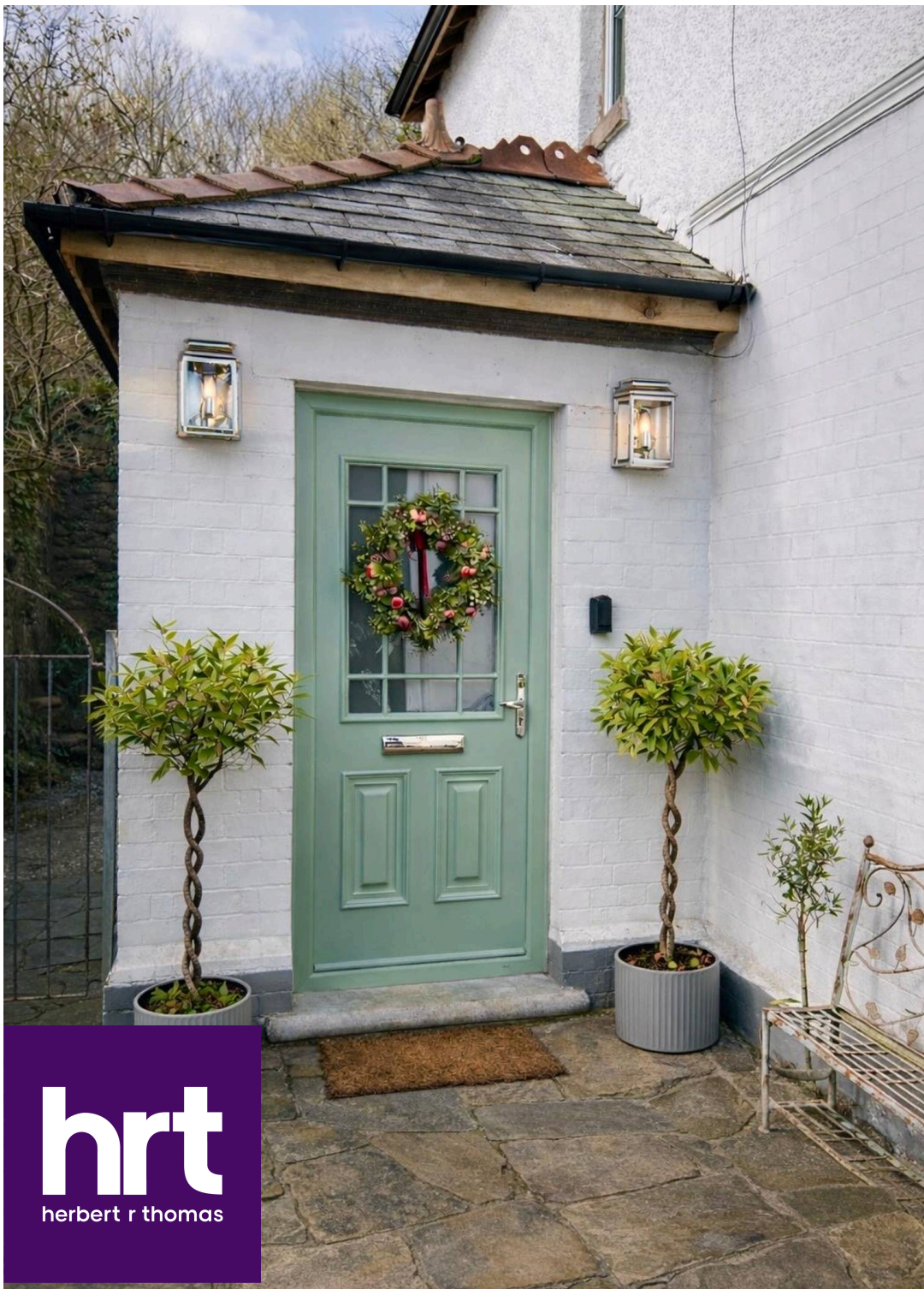
Council Tax band: F

Tenure: Freehold

EPC Energy Efficiency Rating: E

EPC Environmental Impact Rating: F





## Rhiwfer House

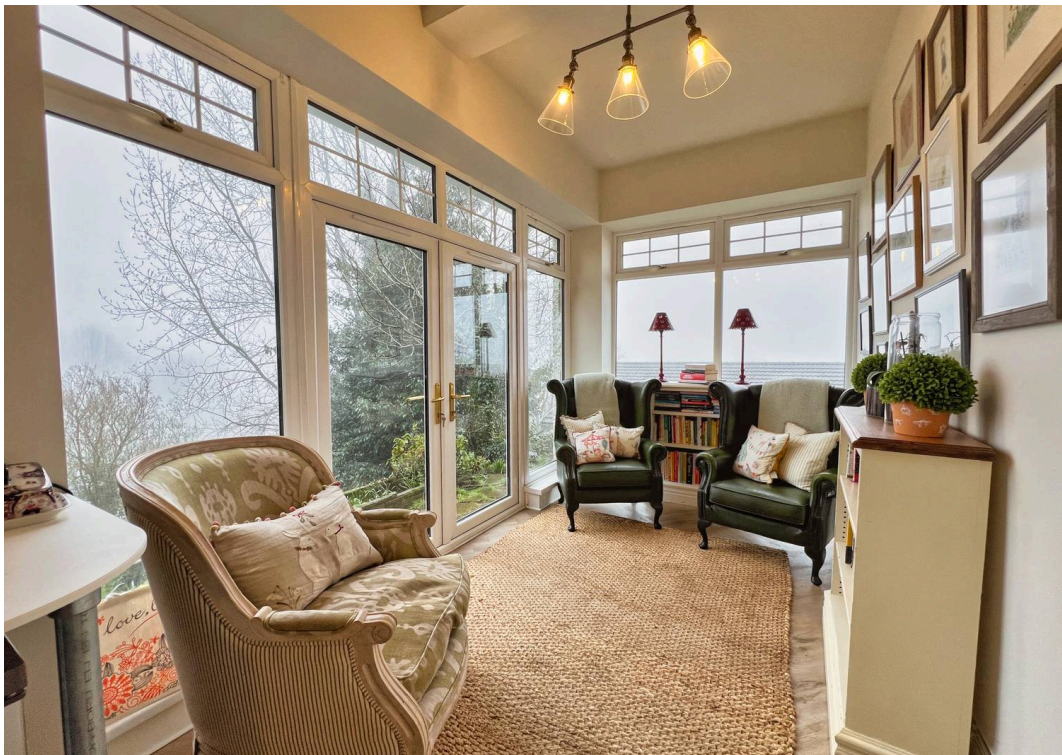
Gilfach Road, Tonypanydy

A substantial 5/6-bedroom detached Victorian property, rich in original features and set on an elevated garden plot with far-reaching valley views. Rhiwfer House offers generous living and bedroom accommodation, including stained-glass windows, quarry-tile flooring, bay windows and coved ceilings. The current owners have significantly improved the home, which is ideal for a large or extended family.

The ground floor includes an entrance porch and hallway with original tiling and a feature stained-glass window. The lounge is a spacious reception room with exposed floorboards, a stone fireplace and a box bay window with impressive views. The dual-aspect kitchen/breakfast/living room features shaker-style units, an island with breakfast bar, natural stone surfaces and French doors to the garden. Further rooms include a dining room with Terrazzo flooring and original range, a utility room, laundry room, study with bay window, and a ground-floor wet room.

Upstairs, the galleried landing leads to five double bedrooms, most with built-in storage and views across the valley. The master suite includes a dressing area with eaves wardrobes. There is a refurbished family bathroom and a cloakroom on the half landing. Stairs lead to a second-floor attic level with a double bedroom, dressing room and additional storeroom.

Outside, the property sits within a generous mature garden requiring landscaping, with trees and paved patio areas surrounding the house.



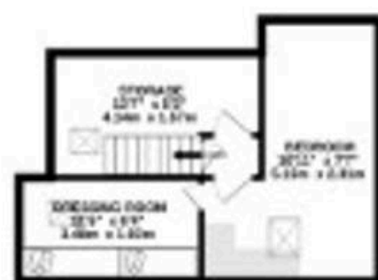
GROUND FLOOR  
2294 sq. ft. (212.4 sq. m.) approx.



1ST FLOOR  
2014 sq. ft. (187.4 sq. m.) approx.



2ND FLOOR  
261 sq. ft. (24.2 sq. m.) approx.



TOTAL FLOOR AREA: 2572 sq. ft. (238.9 sq. m.) approx.

While every attempt has been made to ensure the accuracy of the floorplan contained here, measurements of doors, windows, stairs and any other items are approximate and no responsibility is taken for any error, omission or mis-statement. This plan is for illustrative purposes only and should be used as such by any prospective purchaser. The services, systems and appliances shown have not been tested and no guarantee as to their operability or efficiency can be given.  
Made with Metropix 02020







Enhanced with AI by STREET\_360

## Herbert R Thomas

H R Thomas Ltd, Unit 11-12 - CF10 4AJ

02922671555 • [cardiff@hrt.uk.com](mailto:cardiff@hrt.uk.com) • [www.hrt.uk.com/](http://www.hrt.uk.com/)

