



7, Westall Close, Hertford
SG13 8EY
£179,950



stevenoates.com



7 Westall Close, Hertford, SG13 8EY

Steven Oates are delighted to present this rarely available one bedroom apartment perfectly positioned on the first floor of this private riverside development which is only a stones throw away from Hertford Town centre and both Train Stations. As you step into the property, you are welcomed in through a good size entrance hallway, this leads into the bedroom and the bathroom suite. The kitchen forms part of this impressive light & airy open/plan living area offer room for someone to personalise to taste. There is a Juliet balcony with patio doors off the lounge which beams natural light being south/west facing. Externally, there is barrier controlled off-road parking for the residents and well-kept communal grounds with picturesque views of the River Lea. This apartment makes a fantastic purchase for someone looking for their first home or investment. Internal viewing is highly recommended !

Westall Close is a small development of highly sought after apartments which is quietly tucked away just off West Street which is one of Hertford's most historical residential roads. This property is conveniently positioned for easy access to Hertford town centre itself which offers an excellent choice of local shops, coffee shops and restaurants all within easy walking distance. Aldi supermarket is even closer, only a short walk away. For the commuter, Hertford North and East Stations are only (0.7m) away which between them serve London's Liverpool Street, Moorgate and Kings Cross.



70 Fore Street, Hertford, Hertfordshire, SG14 1BY



70 Fore Street, Hertford, Hertfordshire, SG14 1BY



70 Fore Street, Hertford, Hertfordshire, SG14 1BY



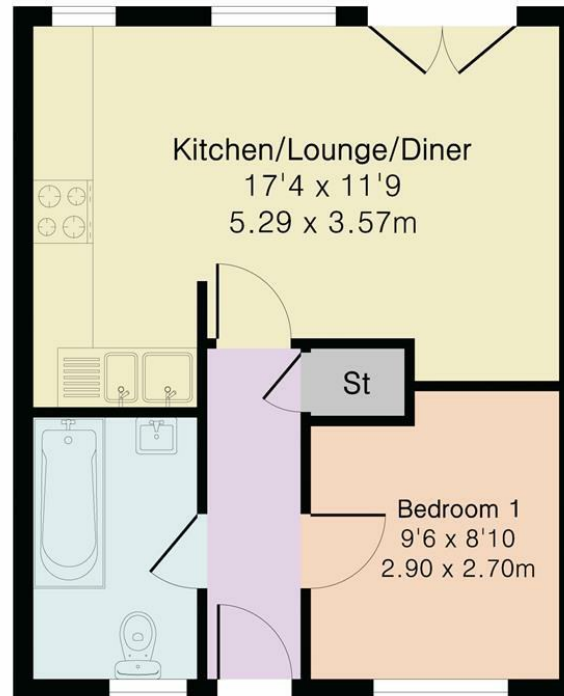


70 Fore Street, Hertford, Hertfordshire, SG14 1BY



70 Fore Street, Hertford, Hertfordshire, SG14 1BY

Approximate Gross Internal Area 374 sq ft - 35 sq m



Floor plan produced in accordance with RICS Property Measurement 2nd Edition. Although Pink Plan Ltd ensures the highest level of accuracy, measurements of doors, windows and rooms are approximate and no responsibility is taken for error, omission or misstatement. These plans are for representation purposes only and no guarantee is given on the total square footage of the property within this plan. The figure icon is for initial guidance only and should not be relied on as a basis of valuation.



These particulars, whilst believed to be accurate are set out as a general outline only for guidance and do not constitute any part of an offer or contract. Intending purchasers should not rely on them as statements of representation of fact, but must satisfy themselves by inspection or otherwise as to their accuracy. No person in this firm's employment has the authority to make or give any representation or warranty in respect of the property.



stevenoates.com