

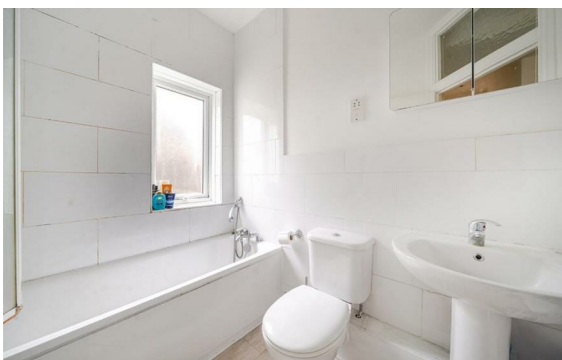


Seymour Place, Marylebone, London, W1H

Rent £692 Per Month

2 Bed | 1 Bath | 1 Reception

Please call us on 020 7724 2233 or email us info@newingtonstates.com to book a viewing.



A well-presented two-bedroom apartment offering comfortable living space and a contemporary finish in a sought-after residential development. The property features a spacious reception room, a separate fully fitted kitchen, two equally sized bedrooms, and a modern bathroom.

Situated within a secure portered building with lift access, the apartment is conveniently located within walking distance of Regent's Park and Hyde Park, with excellent transport links via Baker Street Station, Marylebone Station, and Marble Arch Station.

EPC rating: C

Energy Efficiency Rating: C

Agents Note: Whilst every care has been taken to prepare these particulars, they are for guidance purposes only. All measurements are approximate and are for general guidance purposes only and whilst every care has been taken to ensure their accuracy, they should not be relied upon and potential buyers/tenants are advised to recheck the measurements.

NEWINGTON
— ESTATES —

60 Upper Montagu Street

London

W1H 1SN

020 7724 2233

info@newingtonstates.com

<http://www.newingtonstates.com>