



Kellett Road, Brixton, SW2

3 bedroom flat - conversion for sale

£499,950

Share of Freehold

Property Details

A unique and exciting blank canvas, this three double bedroom split-level apartment occupies the end of a handsome Victorian terrace on the desirable corner of Kellett and Talma Roads. The home spans two floors and enjoys an abundance of natural light thanks to its elevated position. There is also exciting potential to extend into the loft, subject to the necessary permissions. A private side entrance leads to the first floor, where a bright reception room spans the width of the building, framed by a beautiful bay window and enhanced by high ceilings. The separate kitchen enjoys leafy views and offers potential to create a larger open-plan living space by combining the two rooms, again subject to permissions. Upstairs, all three bedrooms are genuine doubles, with the spacious principal bedroom featuring two windows, a fireplace, and useful wardrobe alcoves. Two further bedrooms sit to the rear, alongside a bathroom with bath and overhead shower.

Council tax band D

EPC rating E (52)

Features

- Three double bedrooms
- End-of-terrace Victorian conversion
- Split over two floors
- Exciting blank canvas
- Potential to extend STNP
- Central Brixton moments away
- Victoria line a five-minute stroll
- Brockwell Park a ten-minute walk, Herne Hill in twelve
- Share of freehold. Chain-free

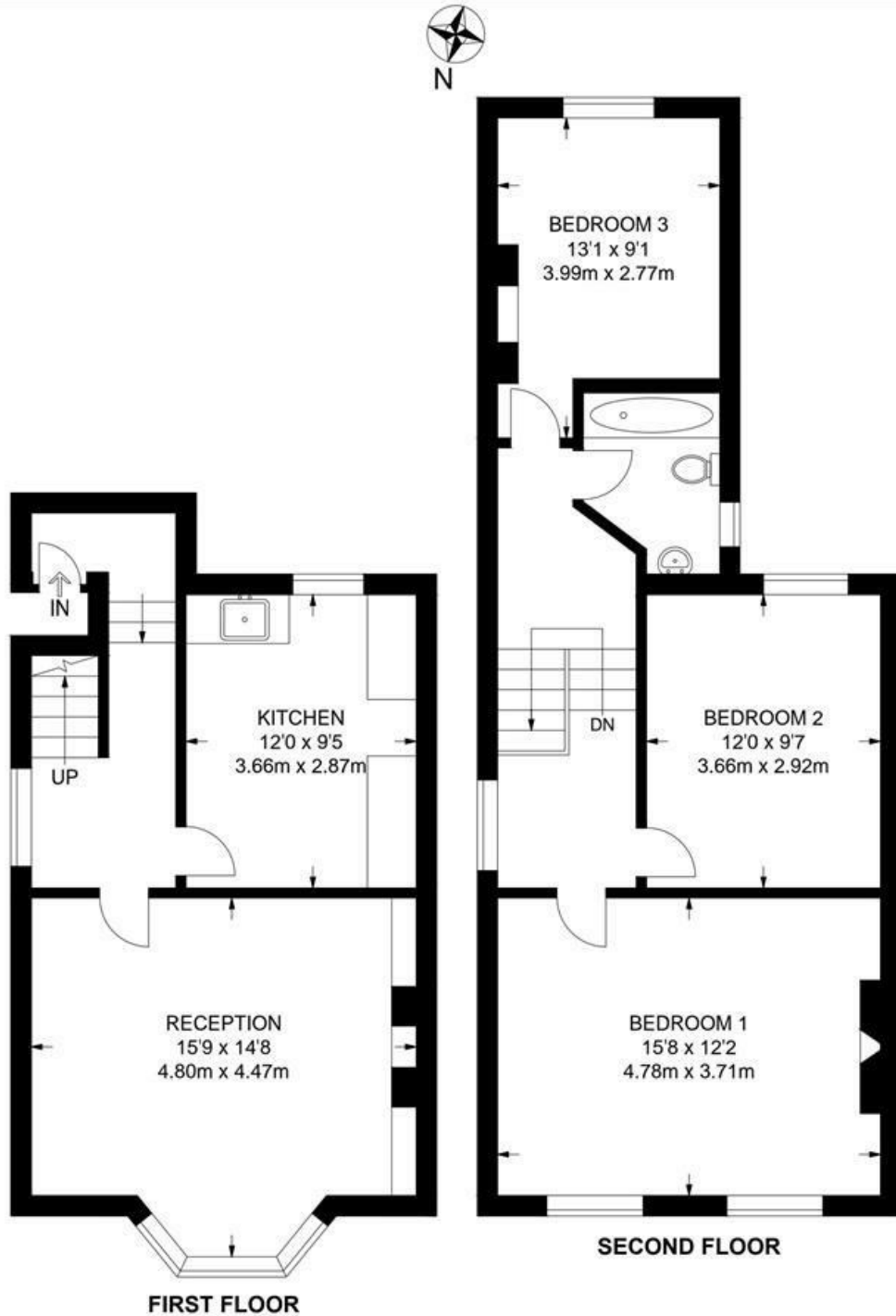


Kellett Road, Brixton, SW2

Kellett Road, SW2

3 Bedroom Flat

APPROXIMATE GROSS INTERNAL AREA: 972 SQ FT / 90.3 SQ M



While we try our very best, floor plans are produced as a guide only and we take no responsibility for the precise accuracy with which any property is represented.

Kellett Road, Brixton, SW2

