



OFFERS OVER

£400,000

Windlesham Close

Portslade, BN41 2LJ

PROPERTY SUMMARY

We are delighted to bring to the market nestled in the desirable area of Windlesham Close, Portslade, this charming terraced house which presents an excellent opportunity for those looking to create their dream home. Boasting three bedrooms and two reception rooms, this property offers ample space for family living.

While the house is in need of modernisation, it provides a chance for buyers to infuse their personal style and preferences with added potential to extend subject to planning permission. The generous south-west facing garden is a standout feature, perfect for enjoying sunny afternoons and hosting summer gatherings.

Being chain-free, this property allows for a smooth and straightforward purchase process, making it an attractive option for first-time buyers or those looking to invest in a sought-after location. With its potential and prime positioning, this home is a rare find in the current market.

3



1



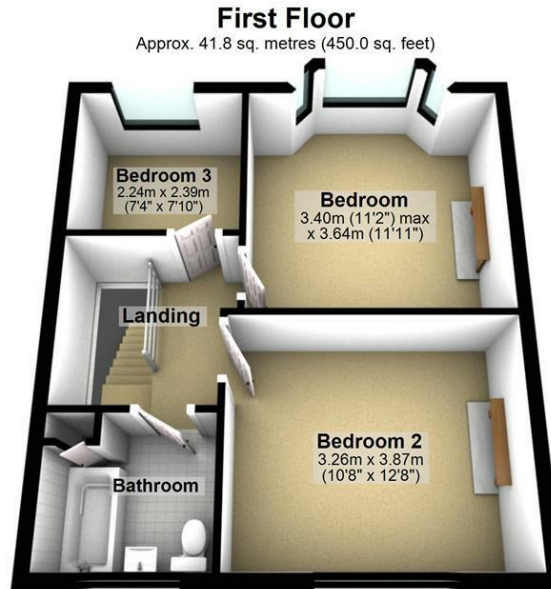
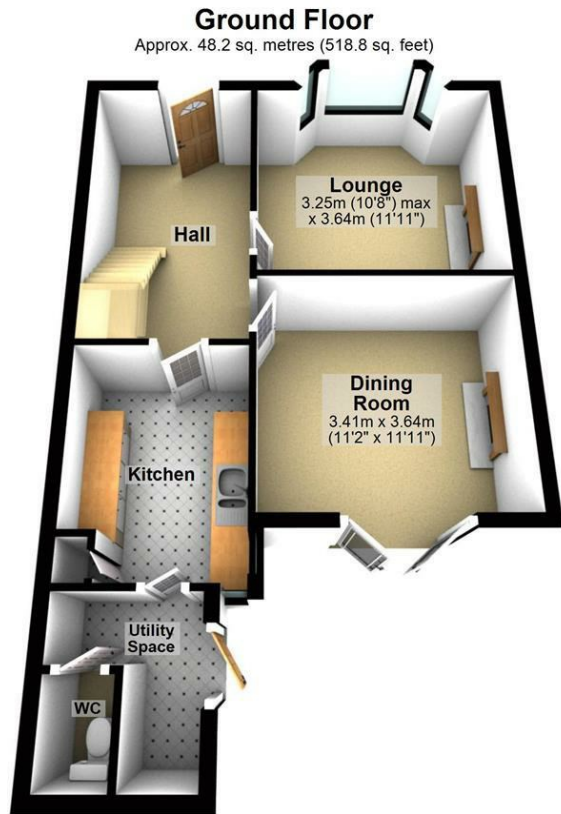
2











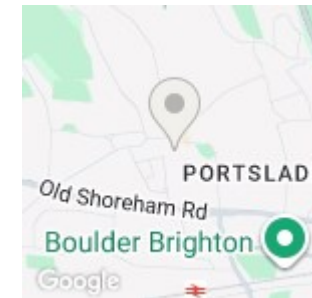
Total area: approx. 90.0 sq. metres (968.8 sq. feet)

LOCAL AUTHORITY

TENURE
Freehold

COUNCIL TAX BAND
C

VIEWINGS
By prior appointment only



Energy Efficiency Rating		Current	Potential
Very energy efficient - lower running costs			
(92 plus)	A		
(81-91)	B		
(69-80)	C		
(55-68)	D	64	78
(39-54)	E		
(21-38)	F		
(1-20)	G		
Not energy efficient - higher running costs			
England & Wales		EU Directive 2002/91/EC	

Agents Note: Whilst every care has been taken to prepare these particulars, they are for guidance purposes only. All measurements are approximate and are for general guidance purposes only and whilst every care has been taken to ensure their accuracy, they should not be relied upon and potential buyers/tenants are advised to recheck the measurements



OFFICE ADDRESS
22 South Farm Road
Worthing
West Sussex
BN14 7AA

OFFICE DETAILS
01903 532225
worthing@localagent.co.uk
www.openhouseworthing.co.uk