



Juniper Drive, Weston Turville Aylesbury HP22 5WW



welcome to

Juniper Drive, Weston Turville Aylesbury

We are pleased to present this well-appointed apartment, ideally located within the popular Hampden Hall development. The property is walking distance of Stoke Mandeville mainline station, making it an excellent choice for commuters or investment purchasers. The accommodation comprises an entrance hall with built-in storage, living room, fitted kitchen, double bedroom, and bathroom, and access to a loft which is useful for storage. Externally, the property benefits from an allocated parking space within a secure, gated residents' car park.



Accommodation Comprises

Entrance Hall

Bathroom

Living Room

13' x 11' (3.96m x 3.35m)

Kitchen

11' 2" x 8' (3.40m x 2.44m)

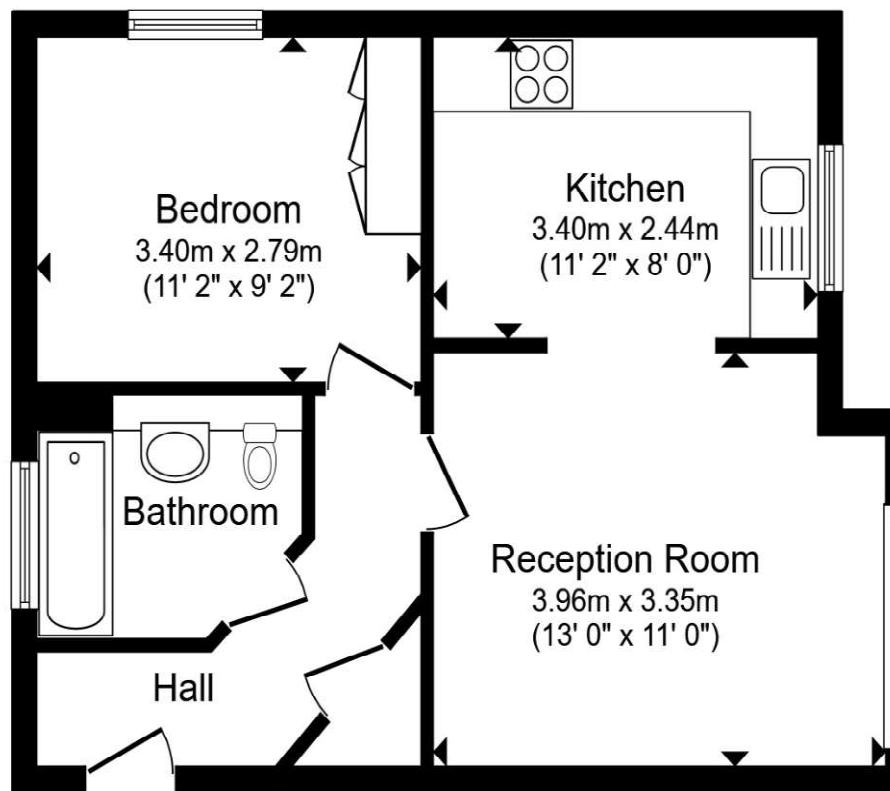
Bedroom

11' 2" x 9' 2" (3.40m x 2.79m)

Weston Turville offers a small selection of local shops, several public houses with restaurants, and an Ofsted-rated Good Church of England junior school. The village also benefits from rugby and golf clubs, along with a nearby reservoir providing opportunities for sailing and angling. A health club with gym and swimming pool is available at the nearby Holiday Inn.

Aylesbury (approximately 3.4 miles away) provides more extensive shopping facilities and a selection of highly regarded grammar schools for both boys and girls. Buckinghamshire is well known for its range of excellent state and private schooling (information available from the local authority).

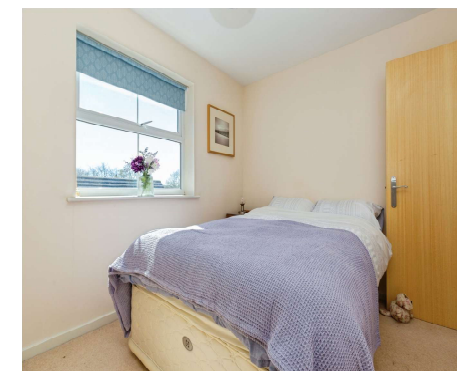
Mainline rail services to London Marylebone are available from Stoke Mandeville (approximately 1.8 miles) and Wendover (approximately 3.1 miles), with journey times of around 53 and 49 minutes respectively.



Second Floor

Total floor area 42.2 m² (455 sq.ft.) approx

This floor plan is for illustrative purposes only. It is not drawn to scale. Any measurements, floor areas (including any total floor area), openings and orientation are approximate. No details are guaranteed, they cannot be relied upon for any purpose and they do not form part of any agreement. No liability is taken for any error, omission or misstatement. A party must rely upon its own inspection(s). Powered by www.propertybox.io



[Type here]



view this property online brownandmerry.co.uk/Property/AYL116356



welcome to

Juniper Drive, Weston Turville Aylesbury

- ONE BEDROOM APARTMENT
- POPULAR HAMPDEN HALL DEVELOPMENT
- IDEAL FIRST TIME BUYER & BUY TO LET INVESTMENT
- ALLOCATED PARKING
- GOOD CONDITION THROUGHOUT
- SITUATED ON 2ND FLOOR
- NO ONWARD CHAIN

Tenure: Leasehold EPC Rating: C Council Tax Band: B Service Charge: 1800.00

Ground Rent: Ask Agent

This is a Leasehold property with details as follows; Term of Lease 125 years from 01 Jan 2005. Should you require further information please contact the branch.
Please Note additional fees could be incurred for items such as Leasehold packs.

£175,000



Please note the marker reflects the postcode not the actual property

[view this property online brownandmerry.co.uk/Property/AYL116356](https://www.brownandmerry.co.uk/Property/AYL116356)



Property Ref:
AYL116356 - 0003

[Type here]

1. MONEY LAUNDERING REGULATIONS Intending purchasers will be asked to produce identification documentation at a later stage and we would ask for your co-operation in order that there is no delay in agreeing the sale. 2. These particulars do not constitute part or all of an offer or contract. 3. The measurements indicated are supplied for guidance only and as such must be considered incorrect. Potential buyers are advised to recheck measurements before committing to any expense. 4. We have not tested any apparatus, equipment, fixtures or services and it is in the buyers interest to check the working condition of any appliances. 5. Where an EPC, or a Home Report (Scotland only) is held for this property, it is available for inspection at the branch by appointment. If you require a printed version of a Home Report, you will need to pay a reasonable production charge reflecting printing and other costs. 6. We are not able to offer an opinion either written or verbal on the content of these reports and this must be obtained from your legal representative. 7. Whilst we take care in preparing these reports, a buyer should ensure that his/her legal representative confirms as soon as possible all matters relating to title including the extent and boundaries of the property and other important matters before exchange of contracts.

Brown & Merry is a trading name of Sequence (UK) Limited which is registered in England and Wales under company number 4268443, Registered Office is Cumbria House, 16-20 Hockliffe Street, Leighton Buzzard, Bedfordshire, LU7 1GN. VAT Registration Number is 500 2481 05.


brown & merry



01296 488111



Aylesbury@brownandmerry.co.uk



5-7 Market Street, AYLESBURY,
Buckinghamshire, HP20 2PN



[brownandmerry.co.uk](https://www.brownandmerry.co.uk)