



HEMMINGS HOMES

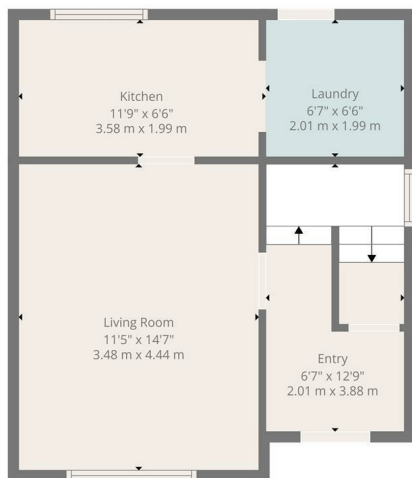
OFFERS OVER

**£155,000**

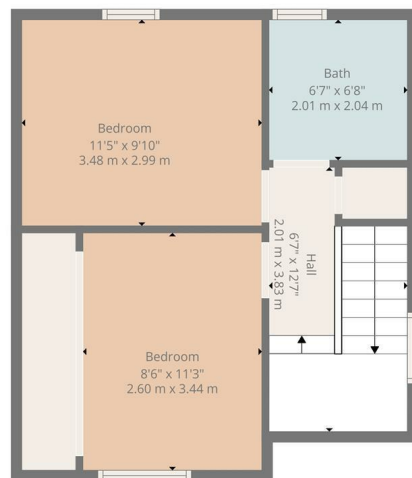
**Nettlehill Drive**

Livingston, EH54 5PS





Ground Floor



1st Floor

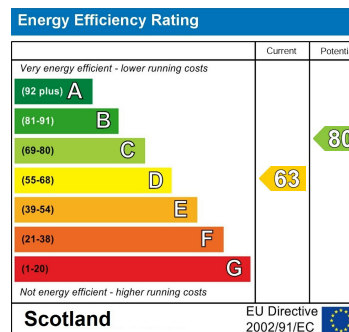


**TOTAL: 760 sq. ft, 70 m<sup>2</sup>**  
 Ground floor: 380 sq. ft, 35 m<sup>2</sup>, 1st floor: 380 sq. ft, 35 m<sup>2</sup>  
 EXCLUDED AREAS: WALLS: 82 sq. ft, 8 m<sup>2</sup>

Floor Plan Created By Cubicasa App. Measurements Deemed Highly Reliable But Not Guaranteed.



Agents Note: Whilst every care has been taken to prepare these particulars, they are for guidance purposes only. All measurements are approximate and are for general guidance purposes only and whilst every care has been taken to ensure their accuracy, they should not be relied upon and potential buyers/tenants are advised to recheck the measurements



HEMMINGS HOMES

### OFFICE ADDRESS

8 Deer Park Avenue  
 Livingston  
 EH48 8AF

### OFFICE DETAILS

enquiries@hemmingshomes.co.uk  
 hemmingshomes.co.uk