



## Edith Grove, SW10

£2,800 Per calendar month

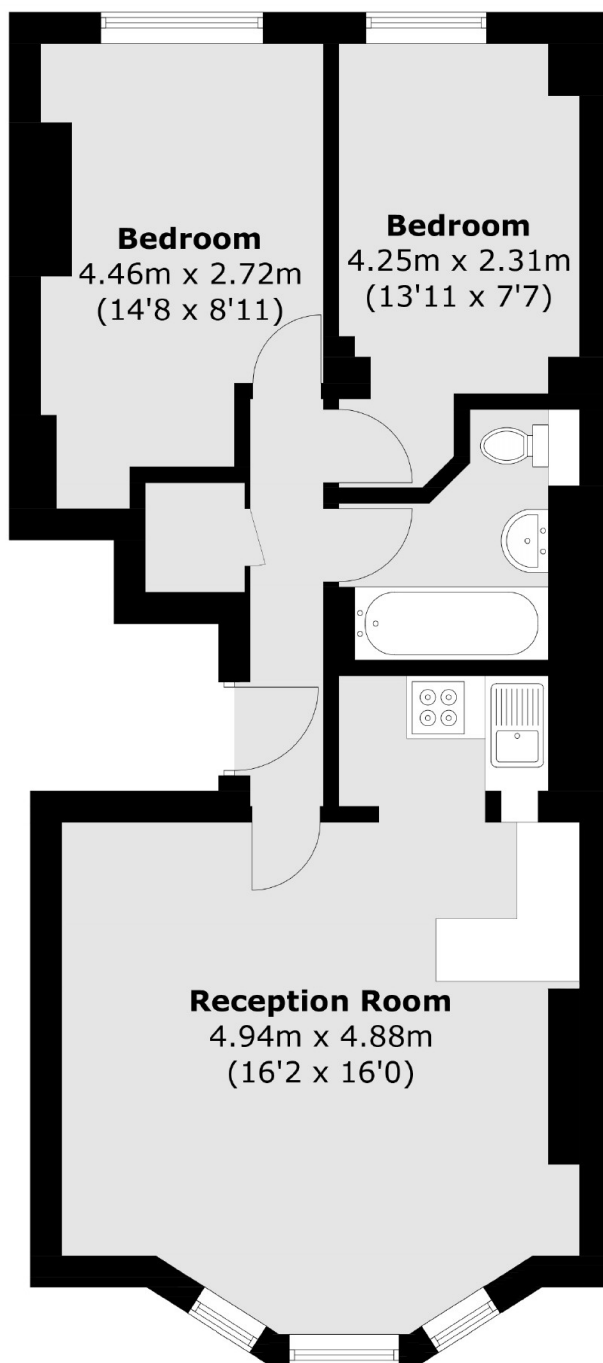
A bright two double bedroom apartment on the raised ground floor on Edith Grove. The property has a semi open plan kitchen and benefits from period features including a fireplace.

Close to a variety of shops on Kings Road. There is a 24 hour Tesco in Earls Court and Sloane Square is within easy reach with an array of cafes and restaurants including The Chelsea Brasserie and The Aural café.

### Features

- Two Double Bedrooms
- One Bathroom
- Period Features
- Raised Ground Floor
- Open Plan Kitchen
- Unfurnished

# Edith Grove, London, SW10



Total area (approx.): 55.7 sq. m (599.5 sq. ft)