



NEWINGTON  
LONDON

2 Bedrooms

Apartment

Located in London

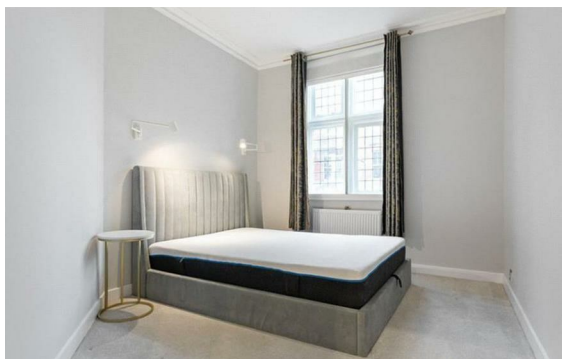
£855 Per Month



[info@newingtonstates.com](mailto:info@newingtonstates.com)

<http://www.newingtonstates.com>

020 7724 2233



Located within an attractive mansions building, this well-proportioned second-floor apartment offers two generous double bedrooms and two bathrooms, including an en-suite. The property features a bright reception room with fitted kitchen and benefits from wood flooring throughout.

The building enjoys the service of a morning porter and is ideally situated close to Baker Street Station, Marylebone High Street, and the open spaces of Regent's Park.

EPC rating: C

### Energy Efficiency Rating: C

Agents Note: Whilst every care has been taken to prepare these particulars, they are for guidance purposes only. All measurements are approximate and are for general guidance purposes only and whilst every care has been taken to ensure their accuracy, they should not be relied upon and potential buyers/tenants are advised to recheck the measurements.

# NEWINGTON LONDON

60 Upper Montagu Street

London

W1H 1SN

020 7724 2233

[info@newingtonstates.com](mailto:info@newingtonstates.com)

<http://www.newingtonstates.com>