



**POOLE
TOWNSEND**

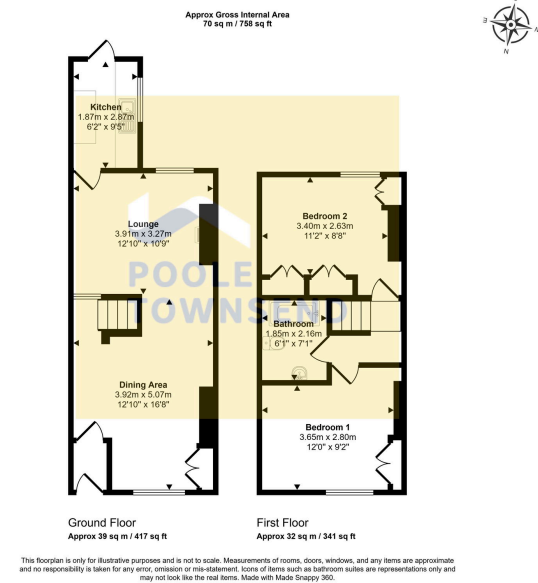
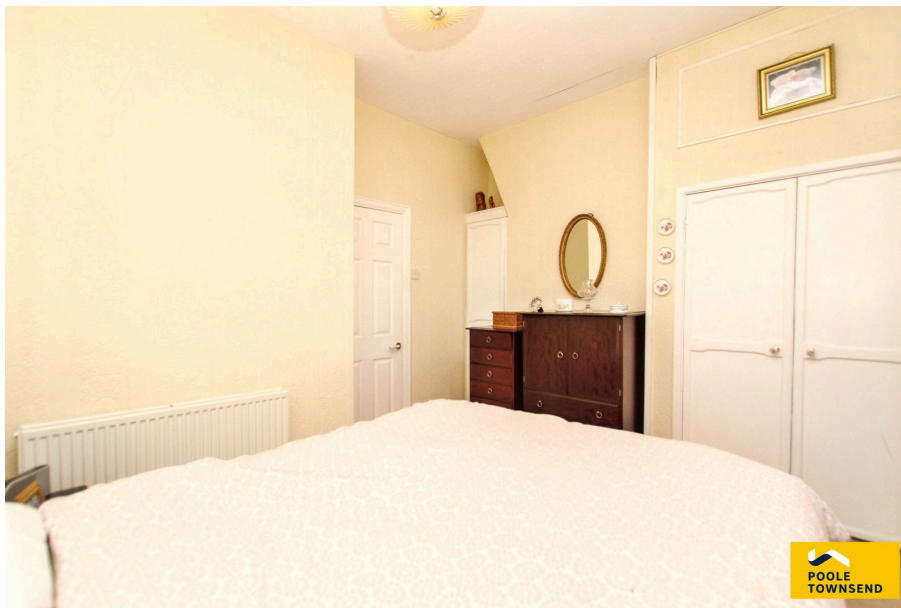
Aberdare Street, Barrow-in-furness, LA14 2TA
£79,950

2 1 2



- 2 Bed Terraced Property
- Close To Local Amenities and BAE Systems
- Two Double Bedrooms
- Double Glazing
- NO UPPER CHAIN!!!
- Great Investment Opportunity
- Open Plan Living Space
- Gas Central Heated
- Council Tax Band A





This mid-terrace property is situated in a popular residential area, sought after by younger buyers, investors and landlords. The living accommodation includes an open plan lounge/dining room with a central staircase with access beneath. There is a kitchen to the rear of the house with access into the two tier patio style yard. The landing leads to a central bathroom which has a three-piece suite and electric shower fitted over the bath and separately to the two double bedrooms. The property has a gas-fired central heating system, double glazing throughout with a combination of UPVC and timber frames. No upper chain.

Visit us at
www.pooletownsend.co.uk
enquiries@pooletownsend.co.uk

We are open
 Monday – Friday 9.00 – 5.00
 Saturday 9.00 – 1.00

Barrow 01229 811811
 Ulverston 01229 588111
 Grange 015395 33316
 Kendal 01539 734455
 Milnthorpe 015395 62044