

Buy. Sell. Rent. Let.



Buttercup Way, Scartho Top, Grimsby



When it comes to
property it must be


lovelle



Offers over £205,000

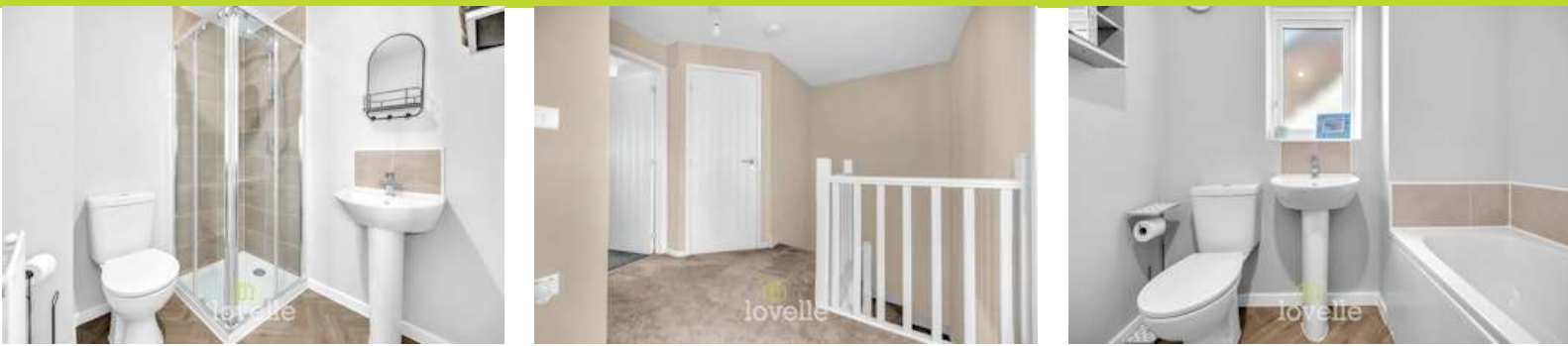


Modern 2024-built three-bedroom semi-detached home on sought-after Scartho Top in Grimsby, offering a contemporary family-friendly layout with en-suite to main bedroom, landscaped garden, drive and garage, solar panels, and convenient access to local amenities, schools, hospital, transport links and wider commuting routes.

Key Features

- Modern Semi-Detached House
- Three Bedrooms & Two Bathrooms
- Driveway & Garage
- Landscaped Garden
- Stunning House
- Built in 2024
- EPC rating B
- Tenure: Freehold





Lovelle offer to market a modern three-bedroom semi-detached house, built in 2024, located on Scartho Top in Grimsby. This gas centrally heated, upvc double glazed and solar panels contribute to improved energy efficiency. The property is designed with families and first-time buyers in mind, combining practical layout with contemporary finishes.

The ground floor includes an entrance porch leading into a well-proportioned lounge with a panelled feature wall and useful storage cupboard under the stairs. To the rear, a modern kitchen offers fitted units and worktops, oven with gas hob and extractor hood, sink, designated laundry space and a dining area with doors opening directly onto the landscaped garden. There is also a cloakroom off the kitchen with wc and sink.

Upstairs, the large double main bedroom benefits from an en-suite shower room with shower, sink and wc. Two further spacious bedrooms are served by a family bathroom with bath, sink and wc.

Outside, the property features a landscaped garden plus drive and garage, providing off-street parking and additional storage.

Scartho Top is a sought after location with good access to local amenities, nearby schools and a nearby hospital. Pleasant walking routes are available in the surrounding area, with further green spaces and local facilities accessible in and around Scartho and Grimsby.

Public transport links connect Scartho Top to Grimsby town centre and Grimsby Town railway station, from where trains run towards Cleethorpes, Barton-on-Humber and Manchester via major interchange points. Road links from the area also provide convenient access to the wider Lincolnshire and Humber region, including commuting routes towards Hull and Lincoln.

Disclaimer

We endeavour to make our sales particulars accurate and reliable, however, they do not constitute or form part of an offer or any contract and none is to be relied upon as statements of representation or fact. Any services, systems and appliances listed in this specification have not been tested by us and no guarantee as to their operating ability or efficiency is given. All measurements have been taken as a guide to prospective buyers only, and are not precise. If you require clarification or further information on any points, please contact us, especially if you are travelling some distance to view.

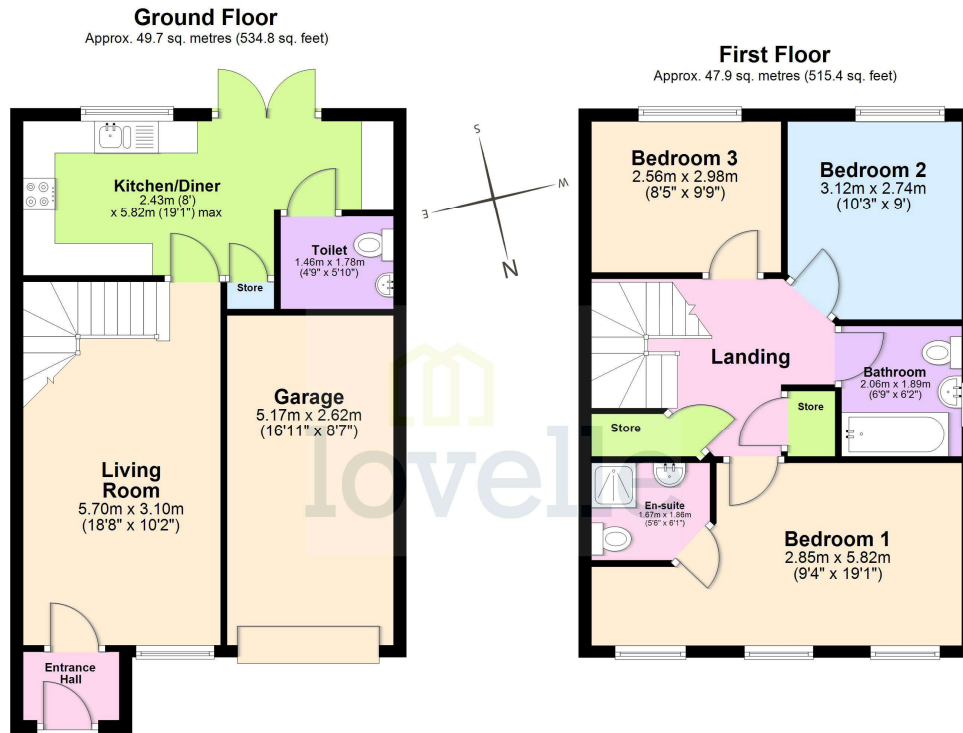




Mobile and broadband

It is advised that prospective purchasers visit checker.ofcom.org.uk in order to review available wifi speeds and mobile connectivity at the property.





Total area: approx. 97.6 sq. metres (1050.1 sq. feet)

The provided floor plan is intended for general informational purposes only and may not accurately represent the exact dimensions, layout, or features of the property. The floor plan should not be relied upon for making decisions about purchasing, renting, or modifying the property. Actual measurements and features may vary. It is recommended that interested parties conduct a physical inspection of the property to verify the accuracy of the floor plan and obtain specific information about the property's condition, amenities, and any other relevant details.

Plan produced using PlanUp.



When it comes to **property**
it must be

lovelle

01472 251918

grimsby@lovelle.co.uk

