

25 Old School Court, King Street, King's Lynn PE30 1DB

£200,000

🛏 1 🚿 1 🛋 1

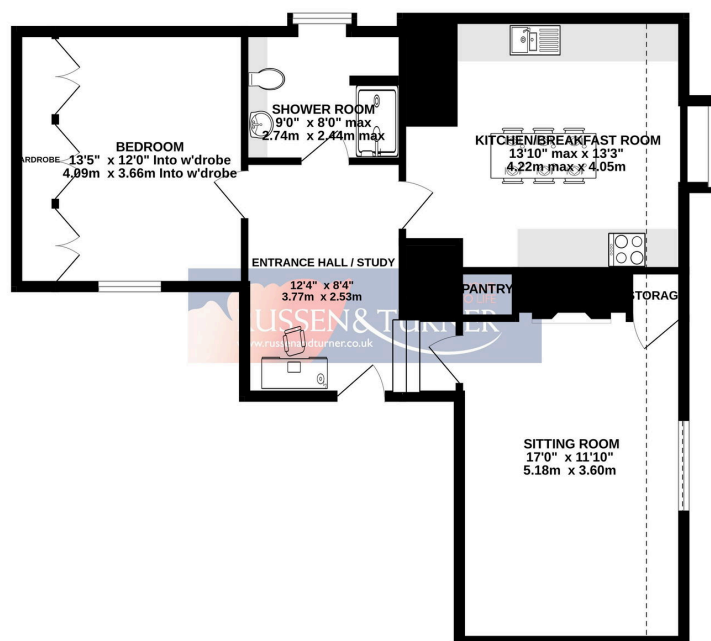


Step into history and style with this stunning top-floor apartment in the prestigious Old School Court, King's Lynn. Once a grand merchant's home, later the Girls' High School, this Grade II listed gem blends Georgian elegance with modern comfort. Imagine arriving through secure gates, past the sweeping staircase, into a home that welcomes you with space, warmth, and character. Picture mornings in your light-filled lounge, evenings in the communal summer house watching the river flow, and weekends strolling to the quay's cafés, bars, and theatre. With a generous double bedroom, stylish kitchen, and beautifully refreshed interiors, this is more than a home – it's a lifestyle. **Your next chapter starts here.**

Key Features

- Top floor apartment
- Grade II listed
- Town centre
- Stylish shower room
- Gated community
- 1 Double bedroom
- Historic charm
- Georgian staircase
- Private parking
- Summer house

GROUND FLOOR
733 sq.ft. (68.1 sq.m.) approx.



TOTAL FLOOR AREA: 733 sq.ft. (68.1 sq.m.) approx.
Whilst every attempt has been made to ensure the accuracy of the foregoing contained here, measurements of doors, windows, rooms and any other items are approximate and no responsibility is taken for any error, omission or mis-statement. This plan is for illustrative purposes only and should be used as such by any prospective purchaser. The services, systems and appliances shown have not been tested and no guarantee as to their operability or efficiency can be given.
Made with Metropix 02/25

