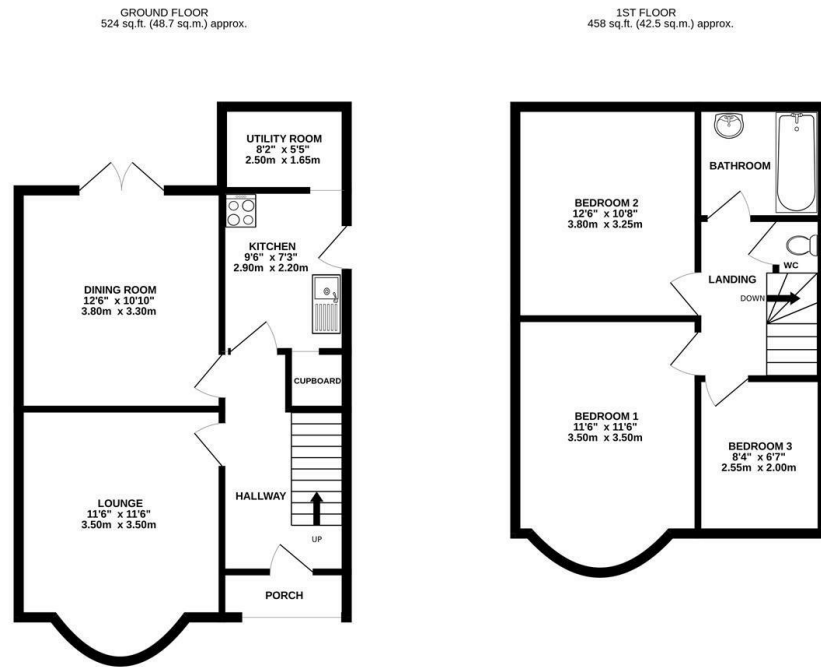




Pine Avenue, Ipswich, IP1 4HW

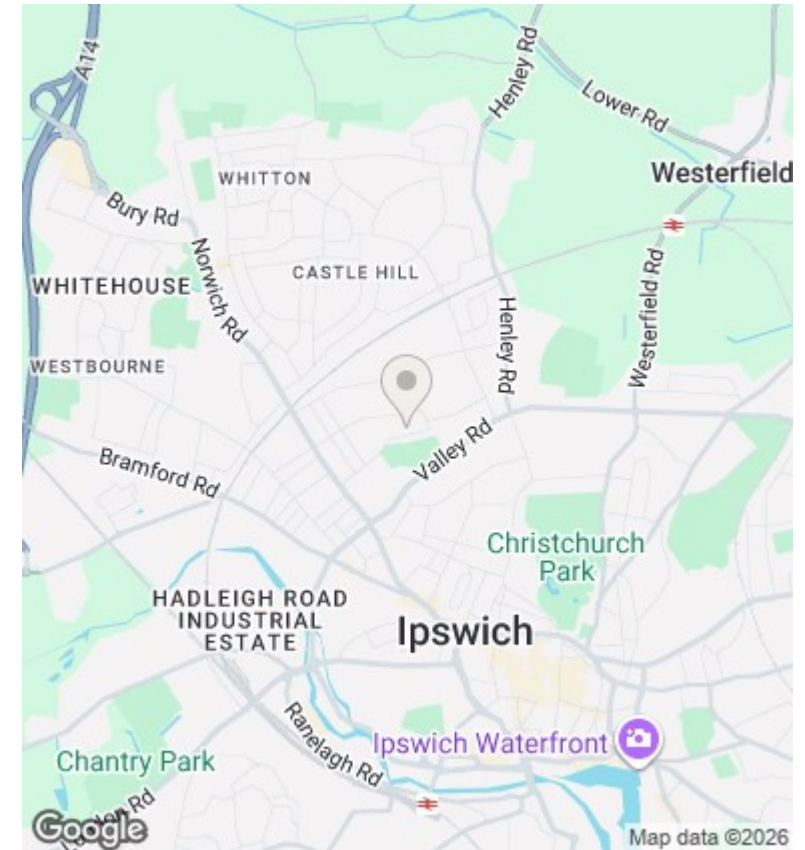
£1,295 PCM

- Three Bedroom Semi-Detached House
- Kitchen
- Driveway Parking
- Available March 2026
- North West Ipswich
- Utility Room
- Gas Central Heating
- Unfurnished
- Bathroom
- Double Glazed



TOTAL FLOOR AREA: 982 sq.ft. (91.3 sq.m.) approx.

Whilst every attempt has been made to ensure the accuracy of the floorplan contained here, measurements of doors, windows, rooms and any other items are approximate and no responsibility is taken for any error, omission or mis-statement. This plan is for illustrative purposes only and should be used as such by any prospective purchaser. The services, systems and appliances shown have not been tested and no guarantee as to their operation or efficiency can be given.
Made with Sketchup ©2024



Directions

Viewings

Viewings by arrangement only. Call 01473 221 399 to make an appointment.

EPC Rating:

D

