

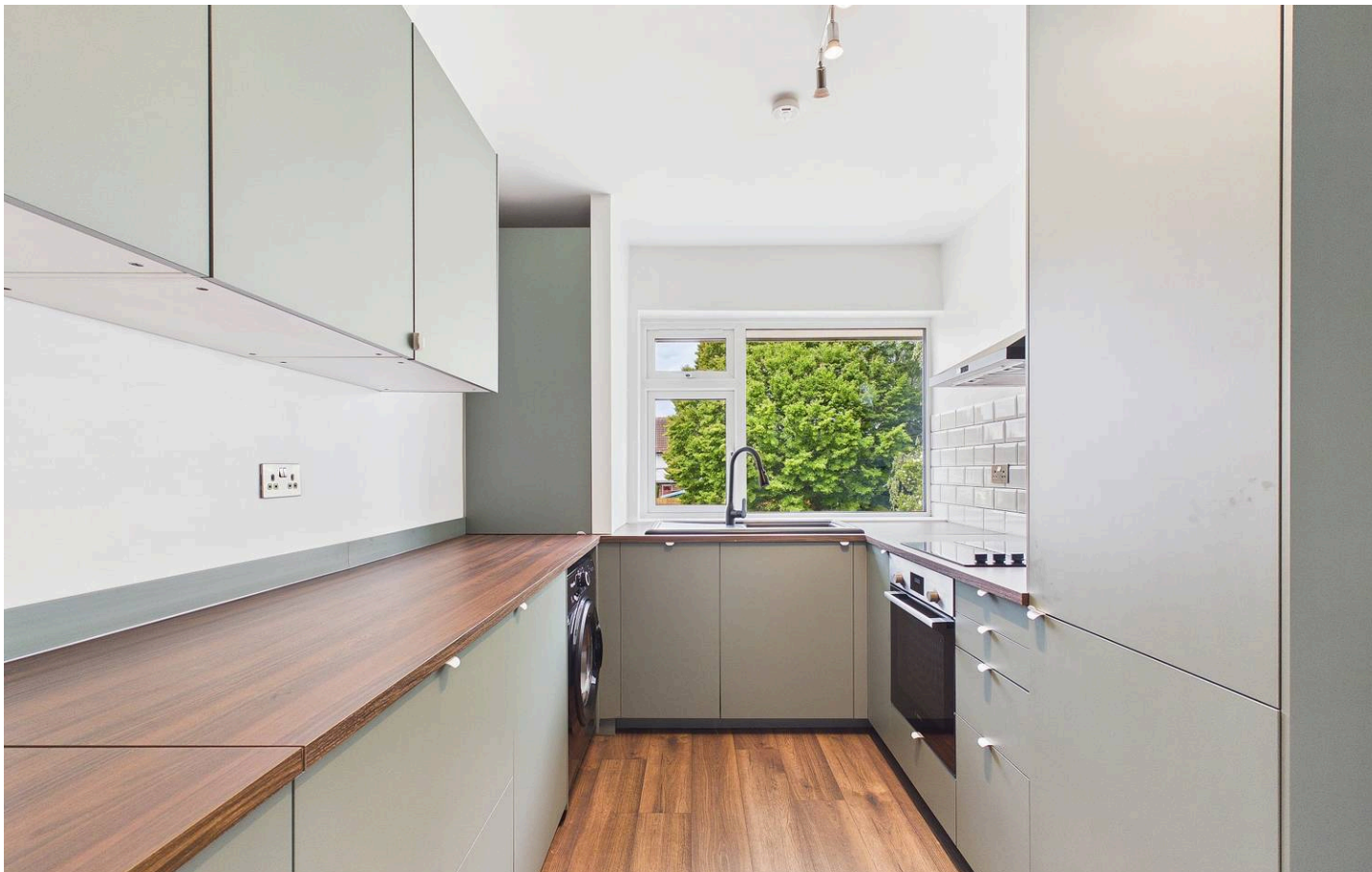


Southbourne Gardens, Ruislip - HA4 9SQ

Guide Price £375,000 | Leasehold



LAWRENCE RAND



Key Features & Description

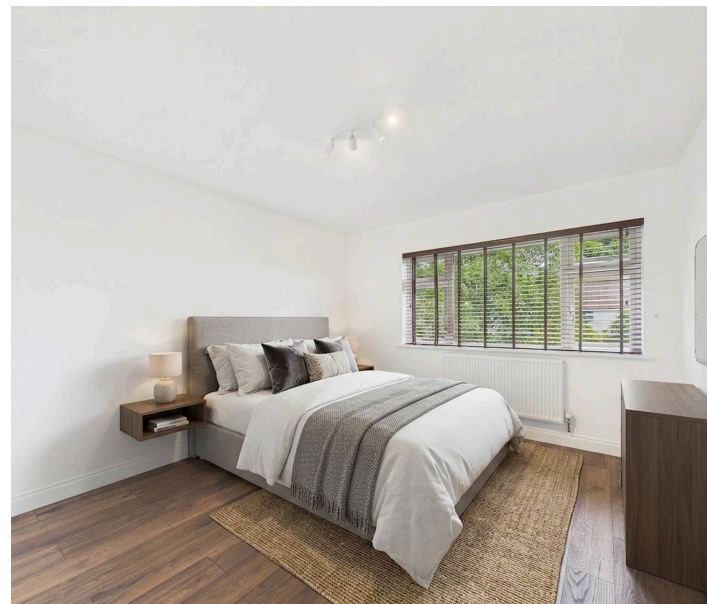
- Two Bedrooms
- First Floor Maisonette
- No Onwards Chain
- Recently Renovated
- Large Private Garden

Offered to the market **chain free**, this beautifully presented **two-bedroom first floor maisonette** on the sought-after **Southbourne Gardens** has been recently renovated throughout, making it an ideal purchase for first-time buyers, downsizers, or investors.

The property offers bright and spacious accommodation, featuring a welcoming entrance, a modern fitted kitchen, a stylish contemporary bathroom, and a generous living room filled with natural light. Both bedrooms are well-proportioned, providing comfortable and versatile living space.

Having been recently refurbished, the maisonette benefits from a fresh, modern finish throughout, allowing the new owner to move straight in with minimal effort. Situated in a convenient residential location, the property enjoys easy access to local amenities, transport links, schools, and nearby green spaces.

Presented with care by Lawrence Rand—helping you find the place you'll love to call home.





174a Southbourne Gardens

Ruislip

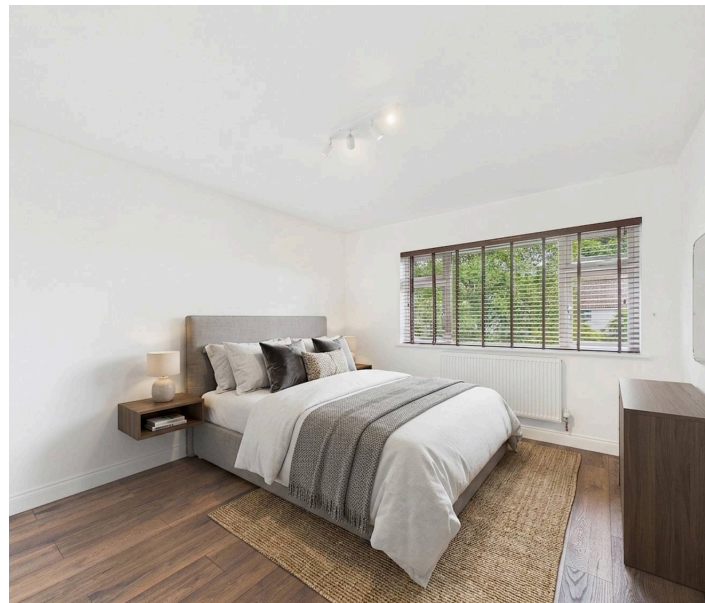
Nearest Stations Eastcote Station- approx 0.4 miles
Ruislip Manor Station - approx 0.4 miles
Ruislip Station - approx 0.8 miles

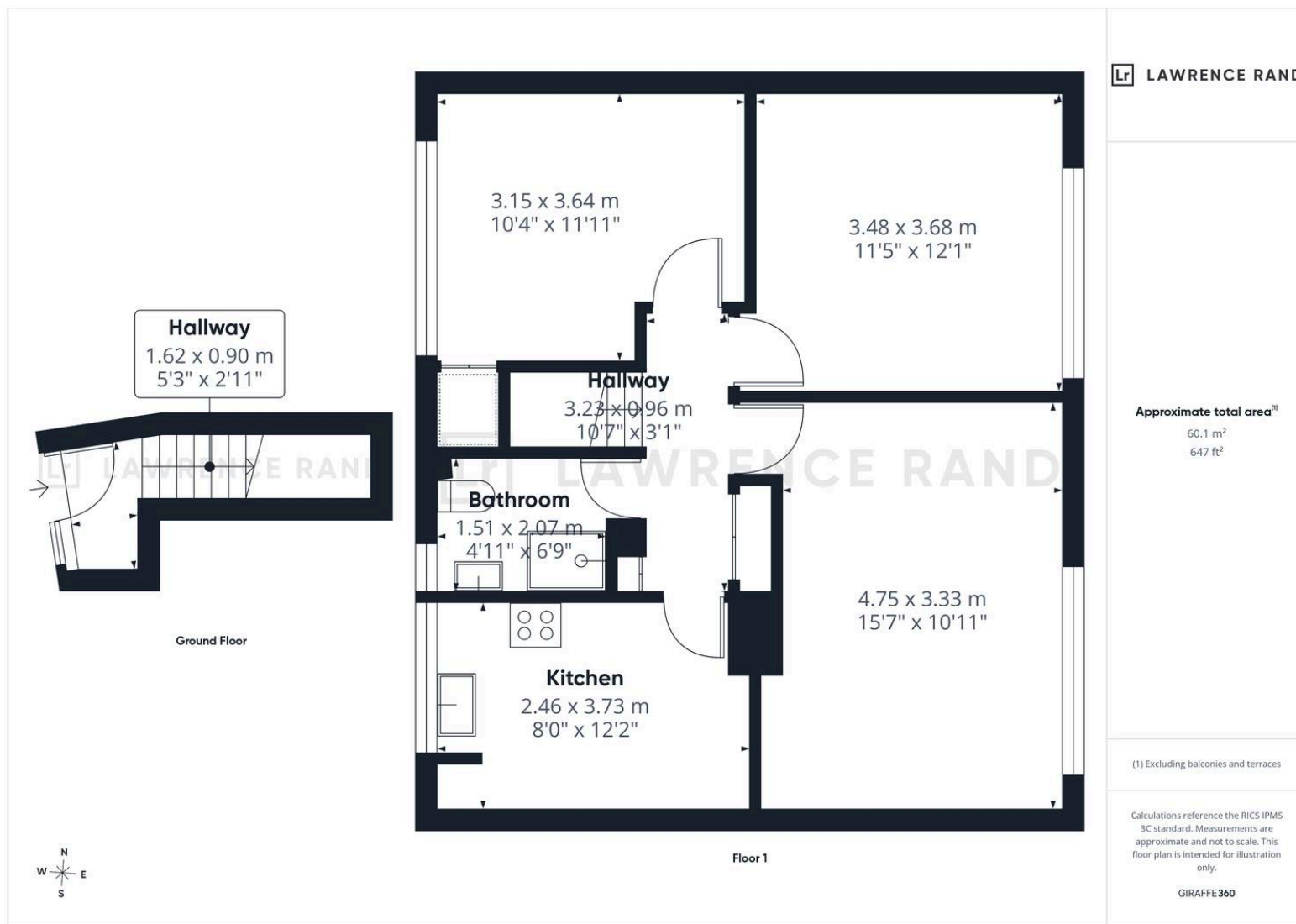
Nearest Stations Eastcote Station- approx 0.4 miles
Ruislip Manor Station - approx 0.4 miles
Ruislip Station - approx 0.8 miles
Council Tax band: C

Tenure: Leasehold

EPC Energy Efficiency Rating: C

EPC Environmental Impact Rating: C





Lawrence Rand

51 Victoria Road, Ruislip - HA4 9BH

01895 632211

sales@lawrence-rand.co.uk

www.lawrence-rand.co.uk/

Lawrence Rand Limited has made every reasonable effort to ensure the accuracy of the information provided. However, we accept no responsibility for errors, omissions, or misstatements. All measurements, distances, and descriptions are approximate and for guidance only. Prospective purchasers or tenants must verify all details independently. Some images may include AI-generated virtual staging to illustrate the potential of the property and are for visual guidance only. No warranty is given or implied, and these particulars do not form part of any offer or contract. Lawrence Rand reserves the right to amend or withdraw any property without notice.