



Greenheys Crescent

GREENMOUNT

In The Heart Of The Village

Tucked into a quiet crescent at the heart of Greenmount, Greenheys Crescent enjoys a setting that feels both open and cosy. A generous driveway sits comfortably at the front, complete with parking and an electric car charger, while a well-kept lawn stretches alongside, bordered by established shrubs that soften the frontage and frame the house beautifully through the seasons.

Across the road, a shared green space opens the outlook further, creating an immediate sense of calm from the moment you arrive. There is a sense of breathing room here, rare in a village heart, where neighbours are close, but space still feels your own.





A Light-Filled Home

The front door opens into a glazed porch flooded with natural light. Windows on either side of the door create a bright pause between outdoors and in, a space designed to make everyday life easier. Coats are hung, shoes are set down, and there is room here for thoughtfully placed built-in storage.



Through an oak, partially glazed door, the entrance hallway opens with confidence. Herringbone LVT flooring runs underfoot and immediately sets the tone for the house beyond. Light flows straight through the home, drawing the eye forward and reinforcing the feeling of space that the homeowners first fell in love with.

Snuggle Up & Settle Down

Turning right, the sitting room offers a cosy space to unwind. Soft, cashmere-tone carpet cushions the floor, while neutral walls and a full panelled feature wall add depth and character. At the heart of the room, a chimney breast finished in brick slips houses an electric fire, with an oak beam above and a built-in TV completing the design.

Inset shelving sits neatly within the alcove, and spotlights above the fireplace add warmth as evening draws in. A large bay window overlooks the front lawn and shared green, filling the room with daylight. It's a space that suits quiet winter nights just as well as children playing close by while the fire glows gently in the background.







The House Opens Out

Back in the hallway, a partially glazed door leads into the open kitchen, dining and living space, and the tone changes instantly. Walls have been removed to allow the room to unfold fully, creating a sociable heart that lives with the garden.

To the left, the kitchen wraps around in a generous layout, finished with integrated appliances including a range cooker, gas hob, ovens, fridge, freezer and dishwasher. Granite-style worktops and a Belfast sink sit beneath a large window, while the breakfast bar provides seating for four, an easy place for quick breakfasts, late-night chats, or simply watching the sun move across the garden.

Deep blue panelling wraps around the living area beyond, anchoring the space and offering flexibility for lounging after meals or introducing a formal dining table. Light pours in from every angle, and on warm days, the room seems to stretch effortlessly outdoors.



A Stairway Of Light

The staircase leads upward, carpeted in soft grey and finished with oak and glass detailing. At the top, a window fills the landing with daylight, creating a space that feels open and calm.

The family bathroom sits immediately at the top of the stairs. Herringbone LVT flooring continues the design language, paired with white tiling on two walls and deep blue paint on the others. A shower sits over the bath, and built-in storage keeps towels and essentials neatly out of sight. Natural light pours in, making the room feel fresh and grounded.





Restful Retreats

Next door, bedroom two overlooks the rear garden. The proportions allow space for a large bed, wardrobes and additional furniture, while the window brings in steady, calming light.

Further along the landing, the principal bedroom sits towards the front of the home. There is ample room for a super king bed and side tables, while a full run of fitted wardrobes lines one wall, the result of thoughtful investment in everyday living. The neutral palette keeps the room calm and adaptable, and the fitted shutter blinds allow morning sunlight to be softened as it filters in, creating a peaceful start to the day overlooking the shared green beyond.

Bedroom three completes the home, featuring panelled walls and fitted storage tucked above the stairs. It works beautifully as a home office, dressing room or single bedroom, flexing easily as life changes.

Living Outside

Back downstairs, sliding doors lead from the kitchen directly onto a raised composite decked terrace, enclosed by glass balustrades so the view remains uninterrupted. This space acts as another room in the summer, catching sun from mid-afternoon into the evening and hosting barbecues, family gatherings and long conversations outdoors.

A shingled walkway leads neatly around the side of the house toward the driveway and garage. The detached garage is currently arranged as a gym, with storage behind including shelving, a fridge freezer, dryer and heating unit.

Beyond, the garden opens into a lawned area framed by mature planting and new panel fencing installed last summer. It is private, safe, and perfectly suited to children playing out, with schools, parkland, the lines, cricket club and village life all close at hand.







Out & About

Perfectly placed between Greenmount, Ramsbottom and Holcombe Brook, it's a location that offers the best of both worlds — peaceful surroundings with everything you need close at hand.

For those who love the outdoors, you're exceptionally well placed. The scenic Kirklees Trail, known locally as 'The Lines', is ideal for walking, cycling and running, while nearby Holcombe Hill rewards walkers with panoramic views from the iconic Peel Tower. Explore the woodland trails of Redisher Woods or enjoy family days out at Burrs Country Park, where riverside walks, open green space and play areas make it a favourite throughout the seasons.

Greenmount is renowned for its strong community feel and excellent local amenities. Nearby you'll find a Co-op open late, an award-winning butcher, chemist, doctor's surgery, hairdressers and beauty salons, alongside independent cafés and local businesses that give the village its welcoming character. Charlie Bakes remains a firm local favourite for sweet treats and celebration cakes.

Food and drink are another highlight of the area. Enjoy relaxed dining at Carmelo's, or head to Miller & Carter for quality steaks and classic dishes. The surrounding villages also offer a varied culinary scene, with Italian, Indian, Thai and traditional British pubs all within easy reach.

Families are particularly well catered for, with highly regarded schools nearby including Greenmount Primary School, Holly Mount RC Primary School and Woodhey High School, while independent options such as Bury Grammar School are also easily accessible.

For those who enjoy an active lifestyle, Greenmount Golf Club, local cricket clubs and nearby sports and tennis facilities provide plenty of opportunities to stay social and active.

Nearby Ramsbottom offers a vibrant high street filled with artisan cafés, independent shops, wine bars and restaurants, alongside regular markets and the heritage East Lancashire Railway. Bury town centre is also within easy reach, offering access to the Metrolink with direct links into Manchester.

Blending countryside charm, village convenience and a strong sense of community, Greenheys Crescent offers a lifestyle that is both connected and enriching — a place where family life, outdoor living and everyday ease come naturally together.

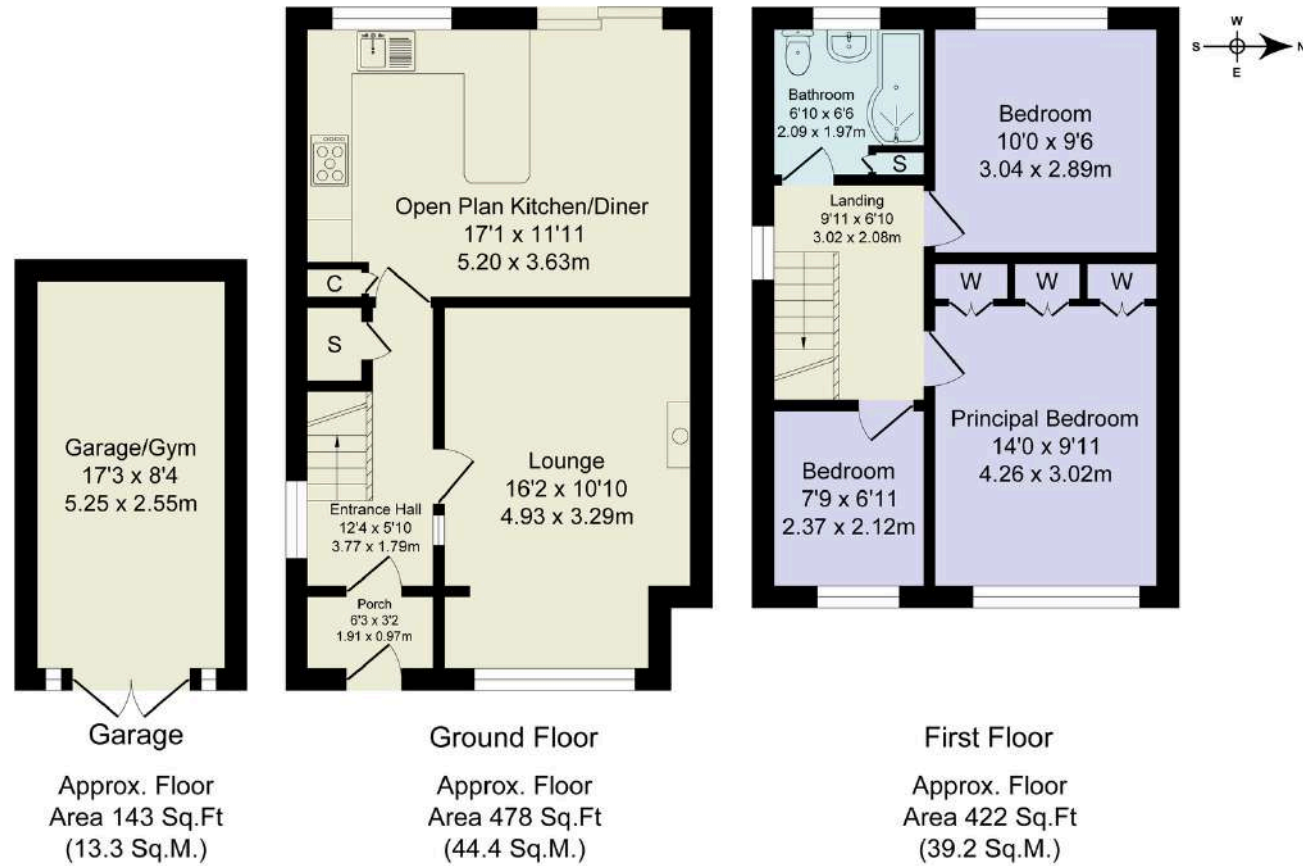
The Finer Details

- Beautifully Presented Three Bedroom Home in the Heart of Greenmount Village
- Stunning Open Plan Kitchen, Dining & Living Space
- Light-Filled Lounge with Feature Fireplace & Bay Window
- Generous Principal Bedroom with Fitted Wardrobes
- Raised Composite Decking with Glass Balustrades
- Private Rear Garden with Mature Planting & New Fencing
- Driveway Parking, Electric Car Charger & Detached Garage/Gym
- Excellent Position Overlooking a Shared Green Space Close to Schools & The Lines
- Freehold
- Council Tax Band C

| Score | Energy rating | Current | Potential |
|-------|---------------|---------|-----------|
| 92+ | A | | |
| 81-91 | B | | 84 B |
| 69-80 | C | 69 C | |
| 55-68 | D | | |
| 39-54 | E | | |
| 21-38 | F | | |
| 1-20 | G | | |

Total Approx. Floor Area 1043 Sq.ft. (96.9 Sq.M.)

Surveyed and drawn by Lens Media for illustrative purposes only. Not to scale. Whilst every attempt was made to ensure the accuracy of the floor plan, all measurements are approximate and no responsibility is taken for any error.



WAINWRIGHTS
ESTATE AGENTS

To view Greenheys Crescent,
Call 01204 773556 or email sales@wainwrightshomes.com