

SNELLERS

ESTATE AGENTS



High Street, TW12

£1,000,000

****OFFERS OVER**** Built in the 1830's is this rare opportunity to acquire a charming and characterful three double bedroom semi detached family home centrally located in Hampton Hill. Retaining a wealth of character, period features and lovely high ceilings. There are also newly fitted triple glazed sash windows, beautiful wooden floors and a large West-Facing garden with the added bonus of scope to extend (STPP).



Enviably situated on the borders of Hampton Hill, Teddington and Twickenham. High Street, Hampton Hill is not only a popular location for the convenience of Fulwell train station, Bushy Park and Hampton Hill high street but it also sits within catchment for Waldegrave girls school.

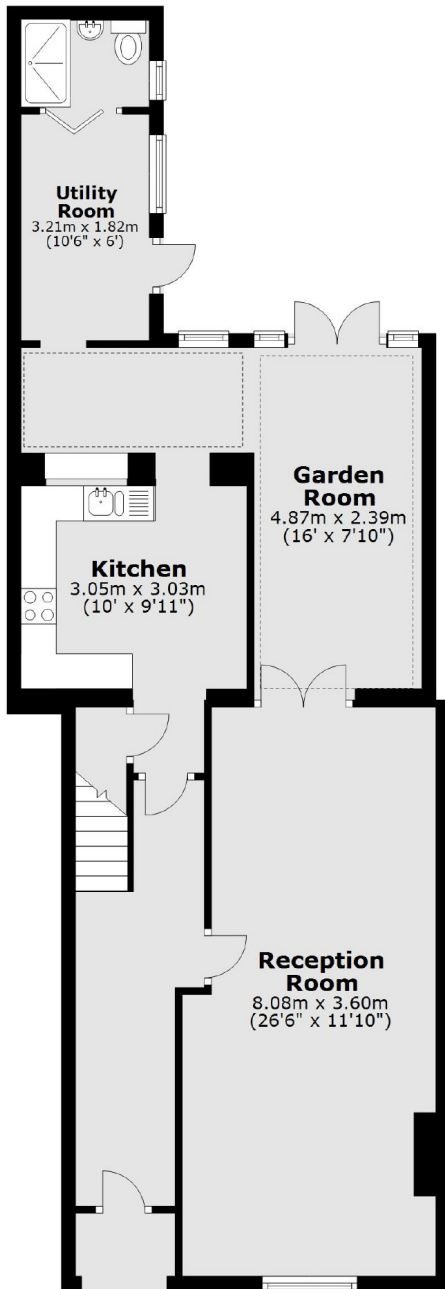
- Circa 1830 • Semi-Detached Villa • Three Double Bedrooms •
- Scope to Extend (STPP) • West-Facing Garden • Rarely Available •



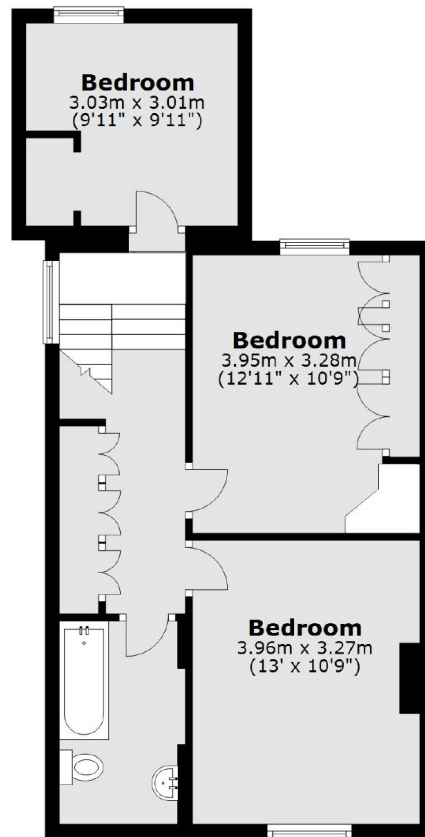
SNELLERS

ESTATE AGENTS

Ground Floor



First Floor



Total area: approx. 119.4 sq. metres (1285.0 sq. feet)

Snellers Hampton Hill Sales
197-201 High Street
Hampton Hill
TW12 1NL
020 8783 0083
hamptonsales@snellers.co.uk

Energy Rating: E We aim to make our particulars both accurate and reliable. However they are not guaranteed; nor do they form part of an offer or contract. If you require clarification on any points then please contact us, especially if you're traveling some distance to view. Please note that appliances and heating systems have not been tested and therefore no warranties can be given as to their good working order