



**Connells**

Beyer Road  
Amesbury Salisbury



## Property Description

Located within the favourable Beyer Road area, this attractive property features four good size bedrooms and an ensuite. Benefiting from two separate reception rooms and a stylish kitchen there is also a large garden which offers good privacy, The A303 and Salisbury are just minutes away.

## Entrance Hall

With stripped wood effect flooring and downlighters, Access to cloakroom, lounge, dining room and kitchen and stairs to first floor landing, .

## Cloakroom

Comprising a WC and wash hand basin.

## Lounge

With further large square bay area with French doors to garden.

## Dining Room

Front aspect.

## Kitchen

Comprising a single drainer sink unit, range of stylish wall and base units, built in double oven, inset gas hob unit with steel hood over, space for dishwasher, metro tiling, rear

aspect, stripped wood effect floor, open through to..

## Utility Area

Wall unit and work surface, space for washing machine, further appliance space, door to garden.

## Landing

## Master Bedroom

Built in wardrobe, front aspect.

## Ensuite

Comprising a shower cubicle, wash hand basin and WC,

## Bedroom Two

Rear aspect.

## Bedroom Three

Rear aspect.

## Bedroom Four

Front aspect.

## Bathroom

Comprising a panel enclosed bath with shower, wash hand basin and WC,

## Outside

## Rear Garden

A lovely lawned garden with block paved patio and well-established border. There is also gated side access and an external water supply.

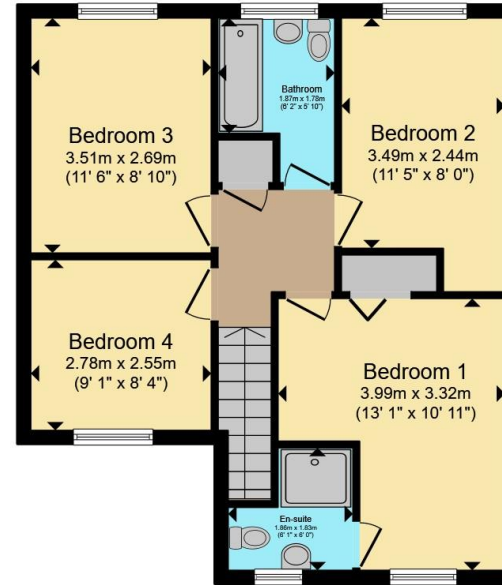
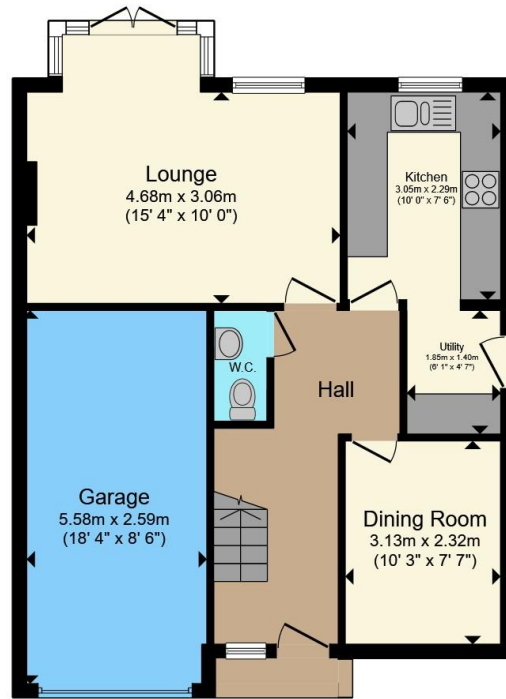
## Integral Garage

With up and over door.









**Ground Floor**

**First Floor**

Total floor area 115.0 m<sup>2</sup> (1,238 sq.ft.) approx

This floor plan is for illustrative purposes only. It is not drawn to scale. Any measurements, floor areas (including any total floor area), openings and orientation are approximate. No details are guaranteed, they cannot be relied upon for any purpose and they do not form part of any agreement. No liability is taken for any error, omission or misstatement. A party must rely upon its own inspection(s). Powered by [www.propertybox.io](http://www.propertybox.io)



To view this property please contact Connells on

**T 01980 622 662**

**E [amesbury@connells.co.uk](mailto:amesbury@connells.co.uk)**

Unit 3 23 Salisbury Street AMESBURY  
SALISBURY SP4 7AW

EPC Rating: C Council Tax  
Band: E

Tenure: Freehold

**view this property online [connells.co.uk/Property/ABY308674](http://connells.co.uk/Property/ABY308674)**



1. MONEY LAUNDERING REGULATIONS Intending purchasers will be asked to produce identification documentation at a later stage and we would ask for your co-operation in order that there will be no delay in agreeing the sale. 2. These particulars do not constitute part or all of an offer or contract. 3. The measurements indicated are supplied for guidance only and as such must be considered incorrect. Potential buyers are advised to recheck measurements before committing to any expense. 4. We have not tested any apparatus, equipment, fixtures, fittings or services and it is in the buyers interest to check the working condition of any appliances.

Connells Residential is registered in England and Wales under company number 1489613, Registered Office is Cumbria House, 16-20 Hockliffe Street, Leighton Buzzard, Bedfordshire, LU7 1GN. VAT Registration Number is 500 2481 05.

**See all our properties at [www.connells.co.uk](http://www.connells.co.uk) | [www.rightmove.co.uk](http://www.rightmove.co.uk) | [www.zoopla.co.uk](http://www.zoopla.co.uk)**

Property Ref: ABY308674 - 0004