



Hopedale Road, SE7

£900,000

Dexters



Hopedale Road, SE7

A spacious four-bedroom end of terrace Victorian home arranged over three floors, offering excellent family accommodation throughout. The ground floor features a bright double reception room to the front and a large kitchen/dining room to the rear with integrated appliances and direct access to a west-facing garden. On the first floor are three double bedrooms and a family bathroom, while the top floor is dedicated to an impressive principal bedroom with an en suite bathroom.

Located on the popular Charlton Slopes, in a wide, sought after road, within the catchment area of popular primary schools, an outstanding secondary school and nurseries. There are excellent transport links to the City and Canary Wharf with regular buses for North Greenwich station and within 0.5 miles of Westcombe Park Station. This property is also a short walk away from Blackheath Standard and Greenwich Park.

Features

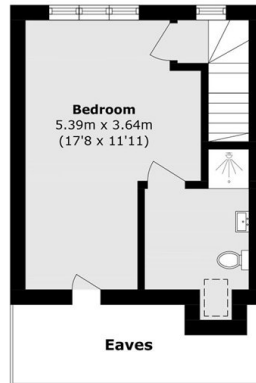
- Four Bedrooms
- Beautifully Presented Throughout
- Much Sought After Road
- Large Kitchen Diner
- Victorian Freehold House



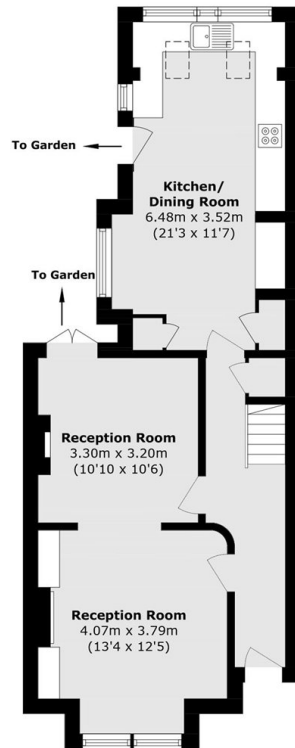




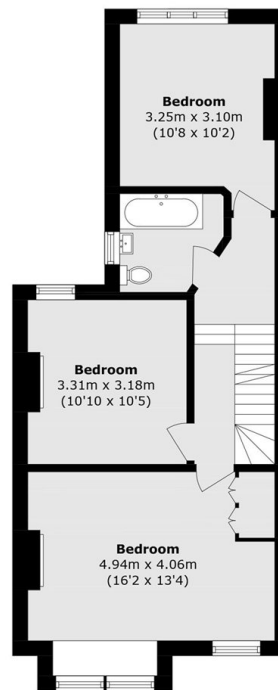
Hopedale Road, London, SE7



Second Floor



Ground Floor



First Floor

Total area (approx.): 132.5 sq. m (1425.2 sq. ft)
(Excluding Eaves)