



Morebeech

MOREBEECH HOUSE
FLAT No. 1, 2 & 3

g
GRANTS
HOMES

Mount Hermon Road, Woking, GU22 7XG

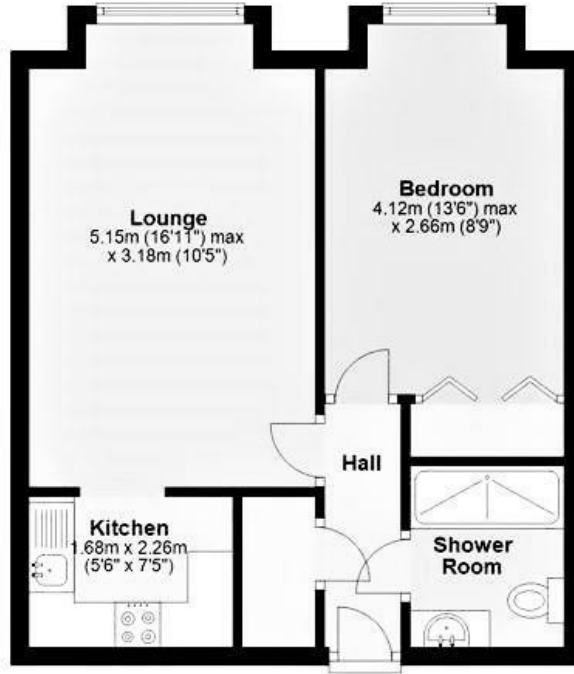


Located close to Woking town centre and in a quiet spot on the development is this one bedroom top floor retirement apartment currently undergoing complete redecoration. Overlooking the communal gardens, the property comprises of a good sized lounge, double bedroom with built in wardrobe, kitchen and shower room. The development has a large communal lounge with a range of activities through the week should you require it and there is parking operating on a first come first serve policy. If you need local transport, there is a bus stop right outside. Call Grants Independent now to view this lovely retirement property. Available now



Floor Plan

Approx. 39.9 sq. metres (429.8 sq. feet)



Total area: approx. 39.9 sq. metres (429.8 sq. feet)

This floor plan is for illustrative purposes only and is not to scale. Where measurements are shown, these are approximate and should not be relied upon. Total square area includes the entirety of the property and any outbuildings/garages. Sanitary ware and kitchen fittings are representative only and approximate to actual position, shape and style. No liability is accepted in respect of any consequential loss arising from the use of this plan. Reproduced under licence from: Evolve Partnership Limited. All rights reserved.
Plan produced using PlanIt.



EPC Rating: 75 C



Grants Homes 60 Church Street, Weybridge, Surrey, KT13 8DL
T: 01932 841020 E: lettings@grantshomes.co.uk

