

PER MONTH

£3,250 Per Month

Ponsonby Place

London, SW1P 4PT

Spanning an impressive 933 square feet, the property boasts a spacious reception room in the ground floor that serves as an inviting space for relaxation and entertaining guests with a modern and fully appointed separate kitchen.

The lower floor has three well-proportioned bedrooms and the one ensuite and one family bathroom provide convenience and comfort, ensuring that morning routines run smoothly for all residents, add to this plenty of storage and a small terrace and you have the ideal home.

The location of Ponsonby Place is particularly appealing, offering a vibrant community atmosphere while being conveniently close to local amenities, transport links, and green spaces. This property presents an excellent opportunity for anyone looking to enjoy the best of London living in a stylish and comfortable home.

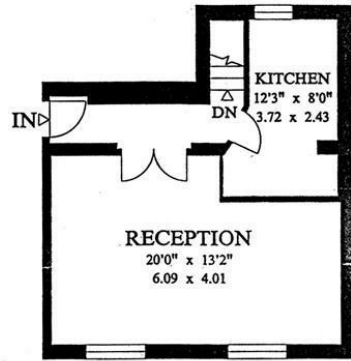
Whether you are a family or sharers seeking a new rental, this flat is sure to impress with its thoughtful layout and prime location. Do not miss the chance to make this charming property your own.

5 weeks: £3750

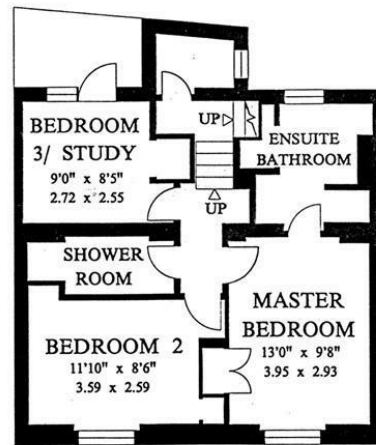
Council Tax: Band G







GROUND FLOOR



LOWER GROUND FLOOR

APPROX. GROSS INTERNAL FLOOR AREA 933 SQ.FT / 86 SQ.M
 Floorplans are for identification and guideline purposes only, not to scale.
 Measurements are approximate.

Energy Efficiency Rating		Current	Potential
Very energy efficient - lower running costs			
(92 plus) A			
(81-91) B			
(69-80) C		69	80
(55-68) D			
(39-54) E			
(21-38) F			
(1-20) G			
Not energy efficient - higher running costs			
England & Wales		EU Directive 2002/91/EC	

Agents Note: Whilst every care has been taken to prepare these particulars, they are for guidance purposes only. All measurements are approximate and are for general guidance purposes only and whilst every care has been taken to ensure their accuracy, they should not be relied upon and potential buyers/tenants are advised to recheck the measurements

OFFICE ADDRESS
 88 Cheshire Street
 London
 E2 6EH

OFFICE DETAILS
 0207 739 6969
 info@peachproperties.com
 www.peachproperties.com