



## Warrington Crescent, W9

£750 Per week

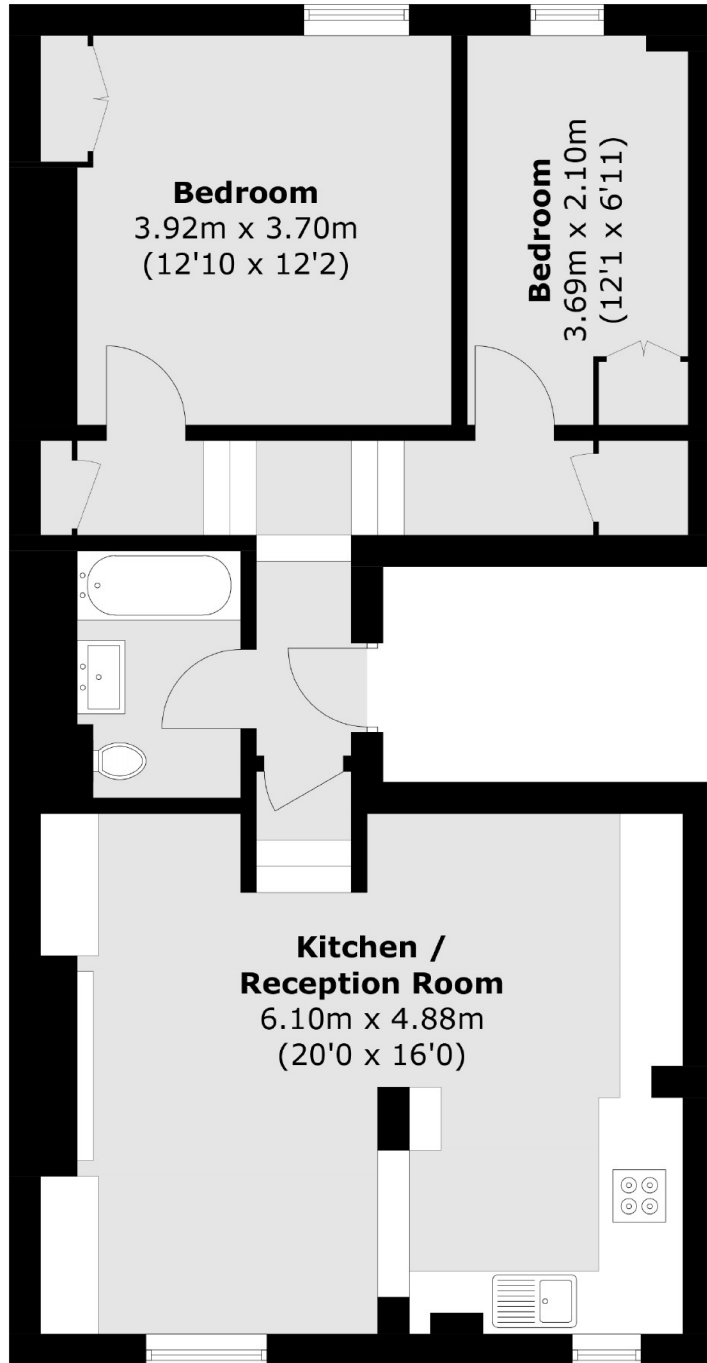
Recently refurbished spacious two double bedroom apartment set on the popular Warrington Crescent. Bright reception and modern open plan kitchen with access to a communal garden.

The property is conveniently located on Warrington Crescent moments from Warwick Avenue station (Bakerloo Line) and local amenities of Formosa Street and Clifton Road.

### Features

- Two Double Bedroom
- Open Plan Kitchen
- Modern Kitchen
- Newly Refurbished
- Ample storage
- Communal Garden

Warrington Crescent,  
Maida Vale, W9



Total area (approx.): 67.3 sq. m (724.4 sq. ft)