

Guilford Street, WC1N

£675,000

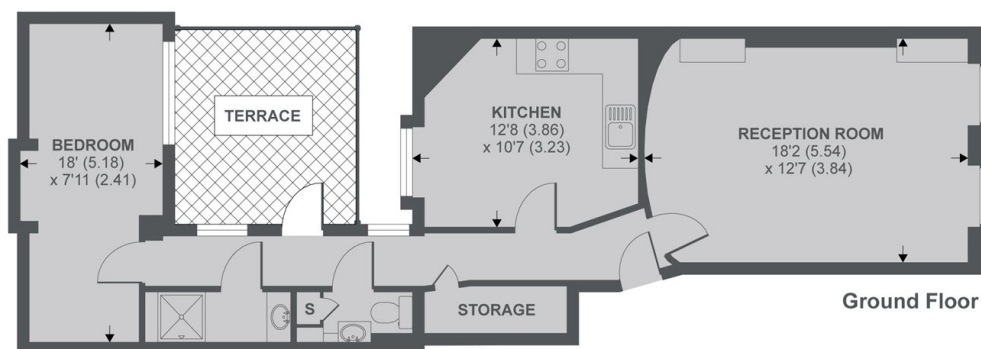
An exceptional, large one bedroom garden flat located in a prime spot on Guilford Street. Comprising a large living room, separate eat in kitchen, WC, shower room and bedroom plus access to a private terrace at the rear.

Guilford Street is well positioned for Russell Square underground and Kings Cross St Pancras providing great access to the UK and Europe. The illustrious Lamb's Conduit Street is also just moments away.

Features

- One Bedroom
- Eat In Kitchen
- Private Terrace
- Long Lease
- High Ceilings
- Period Features

Guilford Street, London, WC1N



APPROX FLOOR AREA 648 SQ.FT 60.1 SQ.M

Copyright nichecom.co.uk 2019 REF : 501833

Dexters

Bloomsbury
55-56 Coram Street
London
WC1N 1HB
Sales
020 7833 4466

Energy Rating: C. We aim to make our particulars both accurate and reliable. However they are not guaranteed; nor do they form part of an offer or contract. If you require clarification on any points then please contact us, especially if you're traveling some distance to view. Please note that appliances and heating systems have not been tested and therefore no warranties can be given as to their good working order.

 **RICS** | Regulated
Estate Agent
and Letting Agent

dexters.co.uk