



## 18 Faulkner Drive, Timperley

£875,000 Freehold

Impressive 4-bed detached home on 0.2 acre plot with double garage, log cabin, and spacious living areas. Prime cul-de-sac location near schools and amenities. Ideal for modern family living.

Council Tax band: E

Tenure: Freehold

EPC Energy Efficiency Rating: D

EPC Environmental Impact Rating: D



**HIBBERT  
HOMES**

SALES & LETTINGS

## Impressive 4-Bed Detached Family Home on 0.2 acre Plot

This beautifully presented four-bedroom detached home is ideally positioned on a quiet and highly sought-after cul-de-sac, offering an exceptional setting for modern family living.

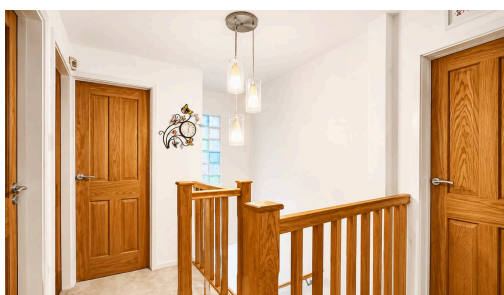
Occupying a generous 0.2 acre plot, the property combines spacious interiors with excellent versatility. The property benefits from a car port alongside a double garage, providing ample secure parking and storage.

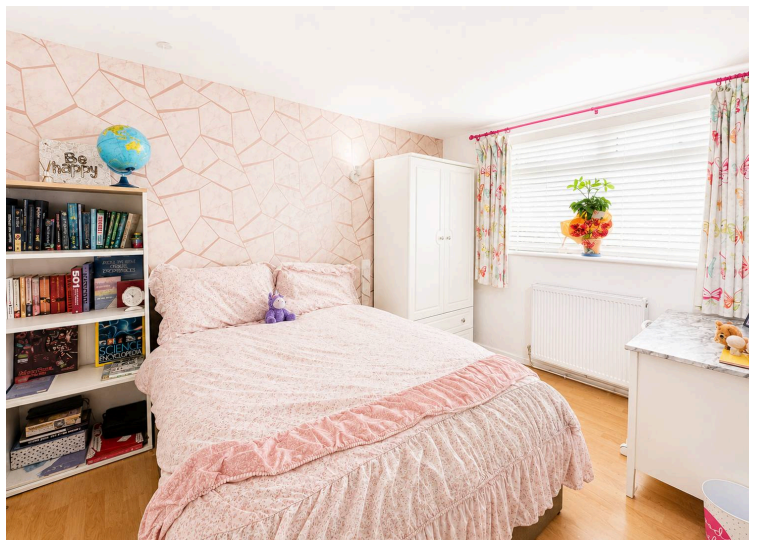
The property also benefits from an attractive and well-equipped outdoor space, including a two-room log cabin (ideal for home office/gym), greenhouse, and decking area, creating a superb environment for outdoor living and entertaining.

Perfectly located within easy reach of highly regarded local schools, amenities, and excellent transport links, this home will appeal to families seeking both convenience and lifestyle.

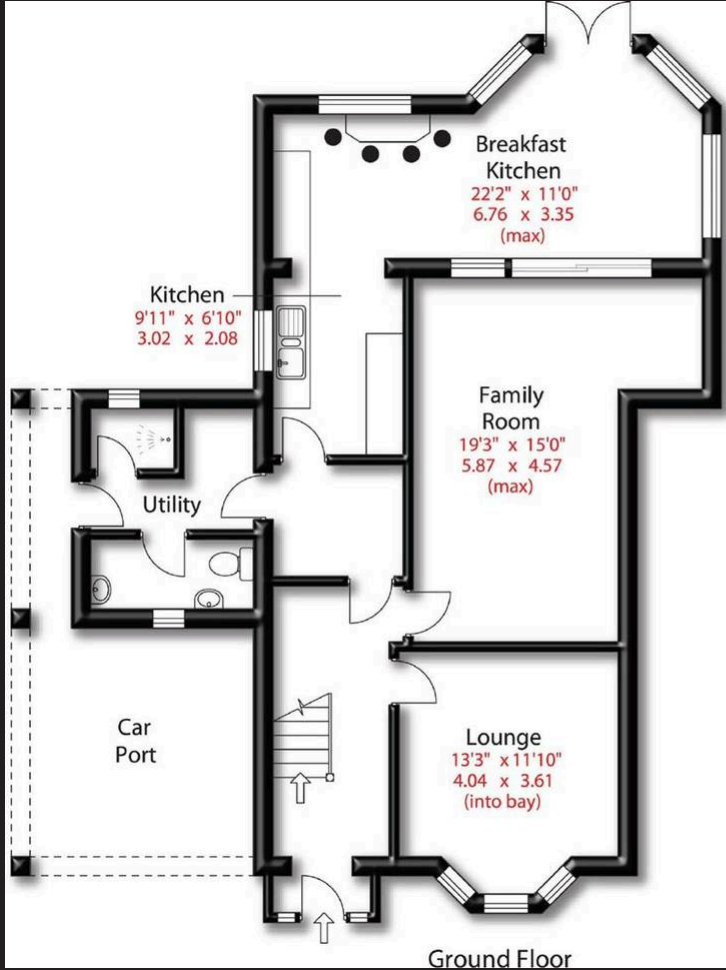


- › Four Bedroom Detached
- › Cul De Sac Location
- › Large Plot
- › Close To Good Local Schools
- › Viewing Highly Recommended
- › Ideal For A Family
- › Stunning Garden
- › Double Garage

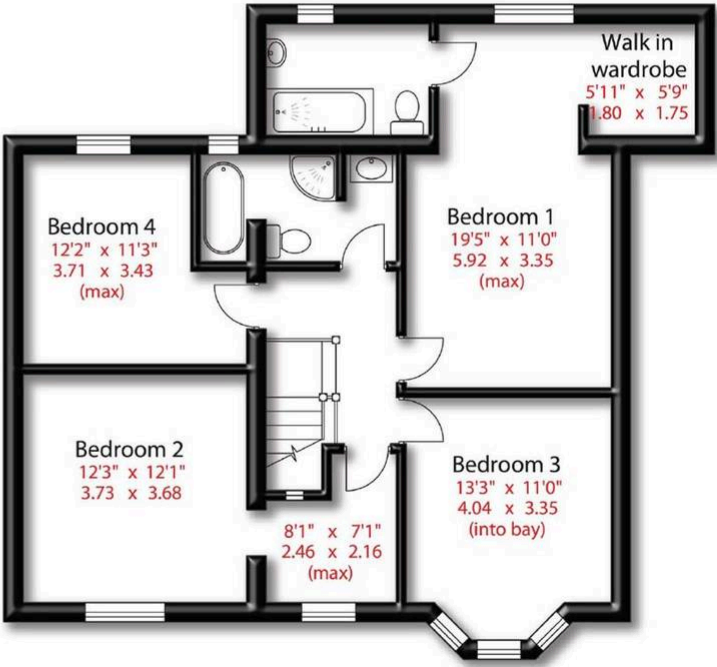




Approx Gross Floor Area = 1884 Sq. Feet  
= 174.65 Sq. Metres



Ground Floor



First Floor

