



**BEAUCHAMP
ESTATES**

Prince Albert Road

ST JOHN'S WOOD





A large newly refurbished apartment opposite Regent's Park.

 4  3

Exterior

An exceptional opportunity to acquire one of the finest lateral double apartments in St John's Wood. The apartment has recently undergone a full refurbishment to a high specification..

Highlights

- Private underground parking with EV charging
- Secure storage unit
- 24-hour concierge
- Communal gym
- Communal gardens





Interiors

Occupying the second floor and positioned on the Prince Albert Road and Townshend Road side of this sought-after premier purpose-built building, the apartment offers bright, spacious and flexible accommodation. Measuring over 2,862 sq ft, it further benefits from wood flooring, two passenger lifts, 24-hour concierge and secure underground parking for one allocated space..

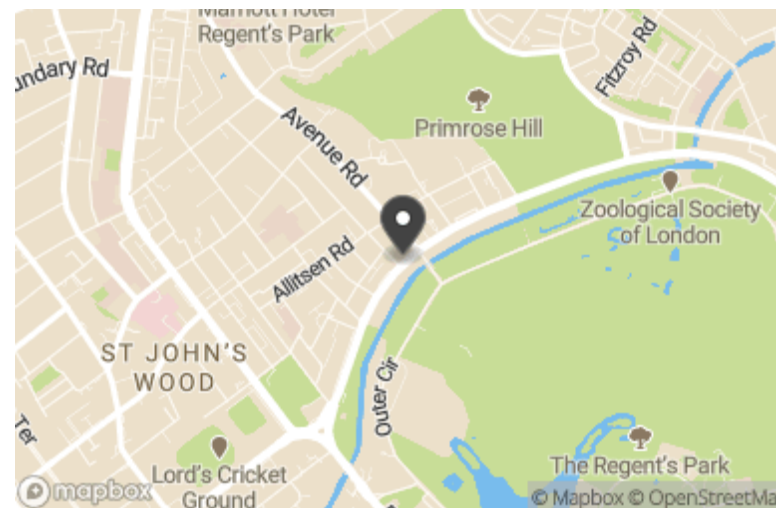


Features

- 24/7 Concierge
- Gym
- Lift

Location

Imperial Court is excellently located being both opposite Regent's Park, next to Primrose Hill and a moments' walk to St John's Wood High Street, affording easy access to all of its amenities including St John's Wood Underground Station (Jubilee line).



Terms

Price: £5,950,000

Tenure: Share of Freehold

Local Authority: Westminster City

Council Tax: H

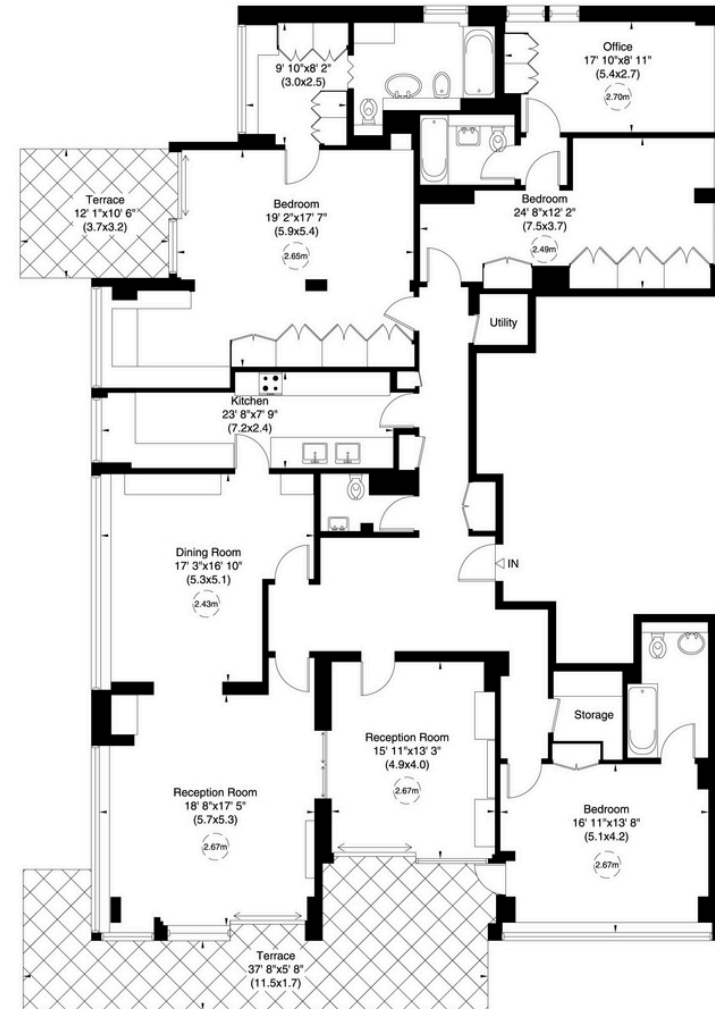
Energy Efficiency Rating		Current	Potential
Very energy efficient - lower running costs			
(92+)	A		
(81-91)	B		
(69-80)	C		
(55-68)	D	69	70
(39-54)	E		
(21-38)	F		
(1-20)	G		
Not energy efficient - higher running costs			
England, Scotland & Wales		EU Directive 2002/91/EC	

Beauchamp Estates, their clients and any joint agents give notice that: 1. They are not authorised to make or give any representation or warranties in relation to the property either here or elsewhere, either on their own behalf or on behalf of their client or otherwise. They assume no responsibility for any statement that may be made in these particulars. These particulars do not form part of any offer or contract and must not be relied upon as statements or representations of fact. 2. Any Areas, measurements or distances are approximate. The text photographs and plans are for guidance only and are not necessarily comprehensive. It should not be assumed that the property has all necessary planning, building regulation or other consents and Beauchamp Estates have not tested any services, equipment or facilities. Purchasers must satisfy themselves by inspection or otherwise.

9 Imperial Court, Prince Albert Road, NW8

Approximate Gross Internal Area
266 sq m/ 2862 sq ft

Not to Scale, for identification only



Second Floor

For guidance only and must not be relied upon as a statement of fact.
All measurements and areas are approximate only (and have been prepared in accordance with the current edition of the RICS Code of Measuring Practice).





**BEAUCHAMP
ESTATES**

Beauchamp Estates - Mayfair

24 Curzon Street,
London, W1J 7TF

020 7499 7722

londoninformation@beauchampestates.com

www.beauchampestates.com