

Property ref: 73849

## Oscar Wilde Road, Reading, RG1 3FH

£1,700 PCM

**HASLAM'S**  
Lettings



A modern, two bed, upper floor apartment located on the outskirts of Reading town centre. Within walking distance of Reading's mainline station and other local amenities.

Reading Borough Council tax band C.

Water supply: Mains

Drainage info: Mains

Electricity supply: Mains

Broadband/Mobile Info: Connections available. For an indication of specific speeds and supply of Broadband and Mobile, we advise applicants go to the Ofcom website Broadband and Mobile Coverage Checker.

**Available 01/07/2026**

- Two double bedrooms, master with en-suite
- Fully fitted contemporary kitchen
- Large open plan living and dining area
- Sundry payment of £75pcm on top of the rent to cover hot water and heating via communal boiler
- EPC rating B; Allocated parking
- Furnished; Managed by HASLAM'S

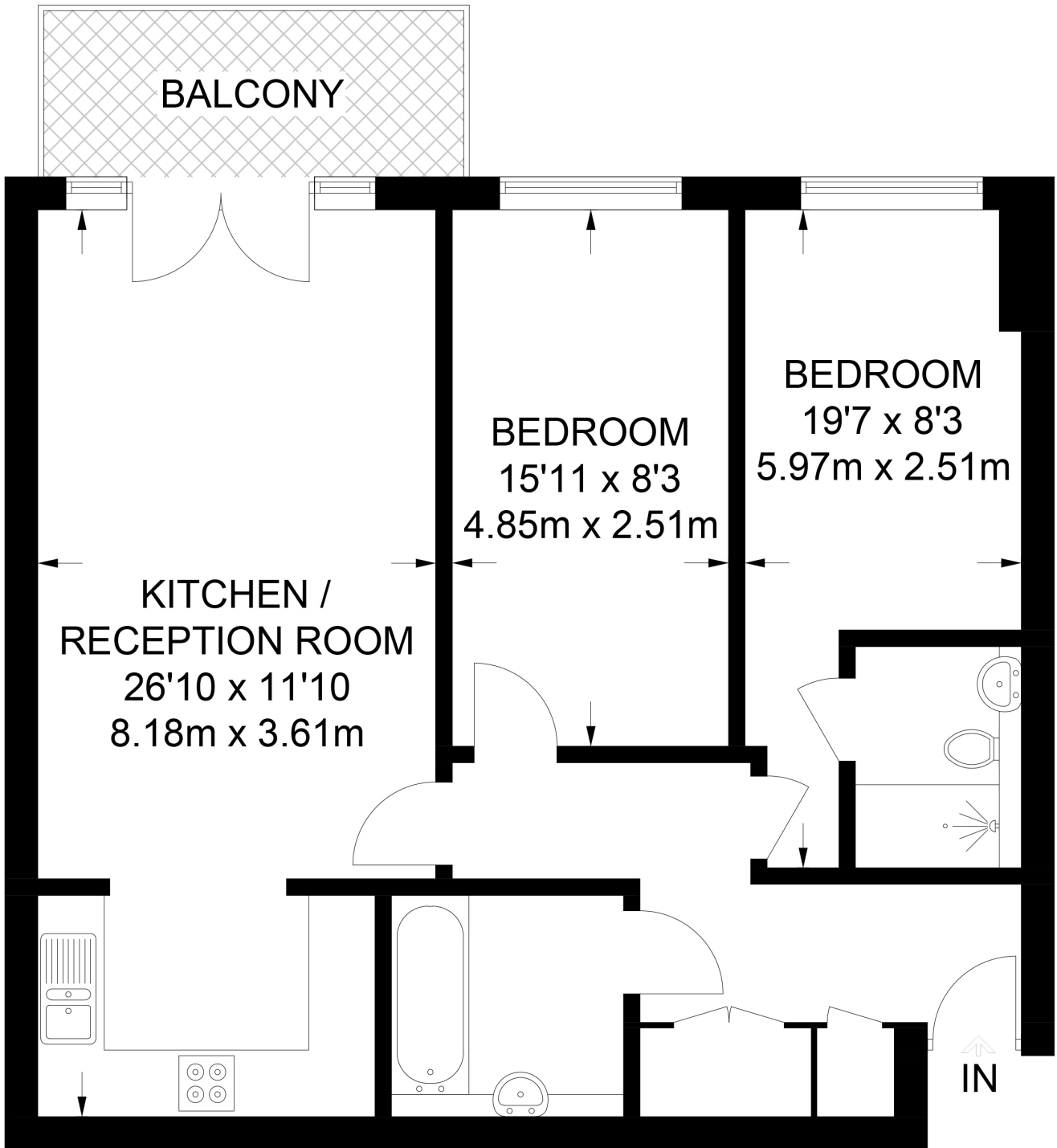
\*Fees For Assured Shorthold Tenancies: when you rent a property from us you will be required to pay a sum equivalent to one weeks' rent for a holding deposit. Upon successful application, this amount will be off set against your first months' rent. You will also be required to pay a security deposit equivalent to 5 weeks' rent which will be held and protected in line with Deposit legislation. For more information about our fees please visit: [www.haslams.net](http://www.haslams.net)  
Fees for all other tenancies (Non Housing Act Tenancies / Company Lets): when you rent a property from us we will charge you a one-off fee per property. This charge is the equivalent of 15 days of the monthly rental charge (+VAT) with a minimum fee of £450 (inc.VAT) up to a maximum of £650 (inc.VAT). Other fees may apply depending on your circumstances.

**0118 960 1055**

**[lettings@haslams.net](mailto:lettings@haslams.net) [www.haslams.net](http://www.haslams.net)**

**Haslams Estate Agents Ltd, 159 Friar Street, Reading, Berkshire, RG1 1HE**





# FIFTH FLOOR

**APPROXIMATE GROSS INTERNAL AREA**  
**779 SQ FT / 72.4 SQ M**

This plan has been drawn for illustrative and identification purposes only.