



## Trewince Road, SW20

### £425,000

A one bedroom, semi-detached bungalow with an open plan living space offering a modern kitchen with fitted appliances and a separate bathroom.

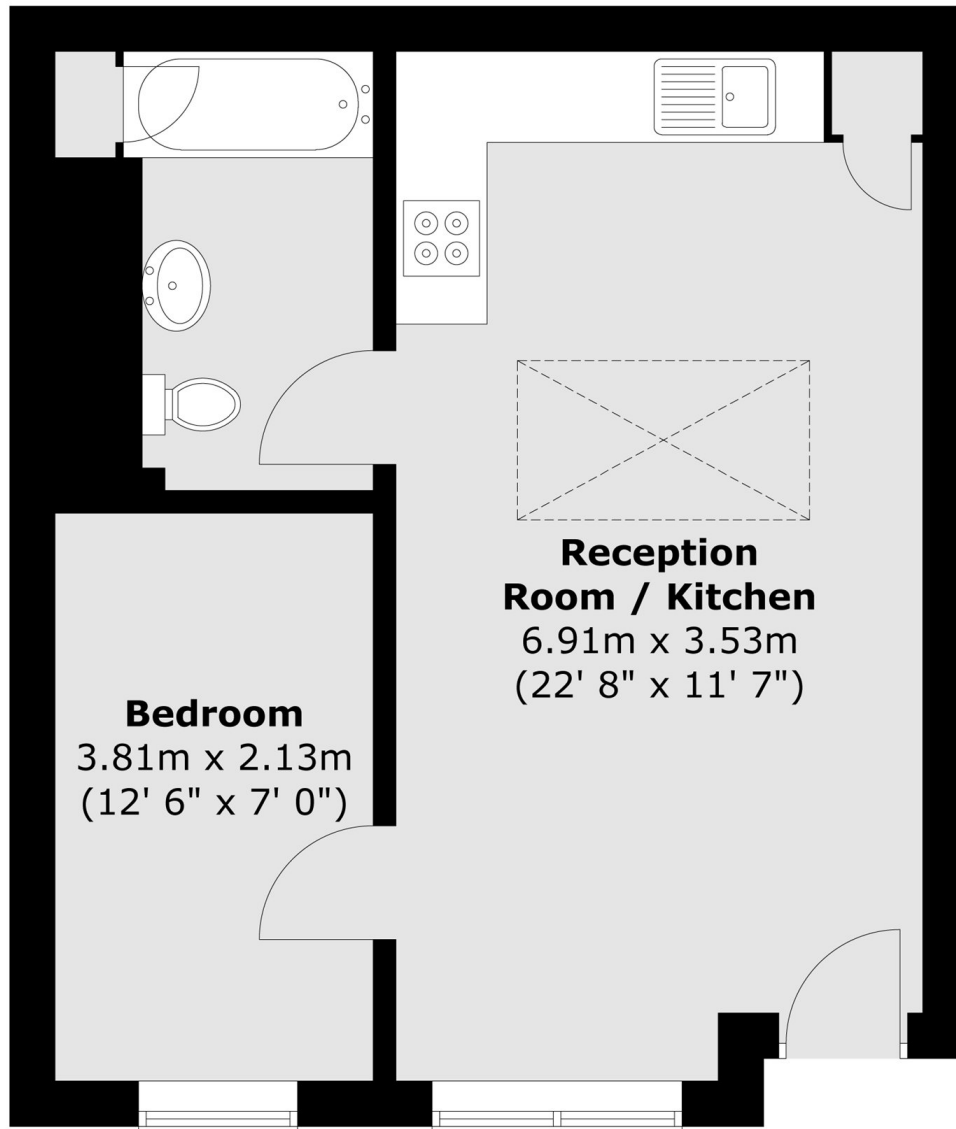
Trewince Road is a quiet tree lined road, located in the highly regarded Lambton Conservation Area, between Wimbledon and Raynes Park. There are excellent transport links as well as local shops and restaurants.

### Features

- One Bedroom
- Bungalow
- Ground Floor
- Own Front Door
- Freehold
- Wooden Floors

# Trewince Road, London, SW20

## Ground Floor



Total area (approx.) : 39.8 sq. m (428 sq. ft)