



## Hazlewood Crescent, W10

### £350,000

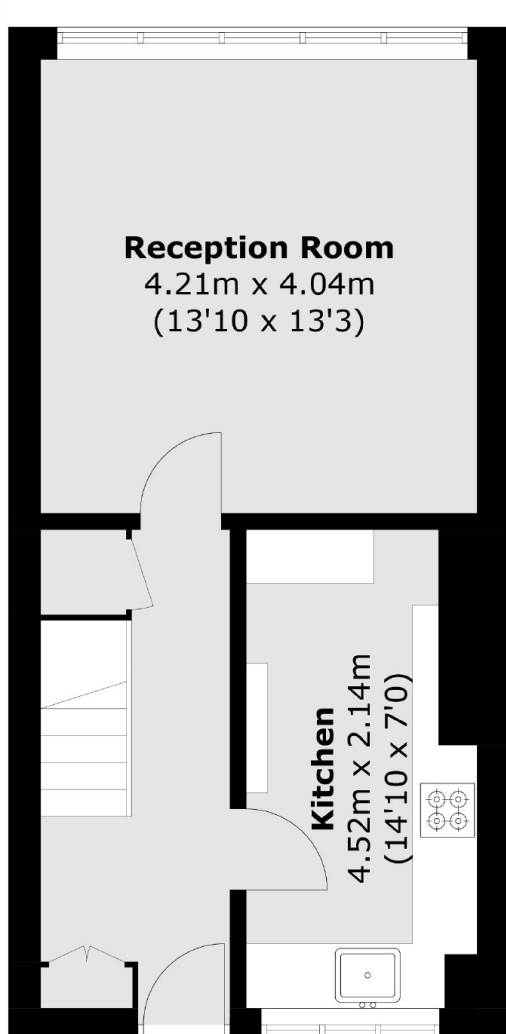
A well-presented, split-level, two double bedroom flat in a purpose built block. The property has a spacious reception room, a separate modern kitchen and wooden flooring throughout.

Located moments from the shops and restaurants of Golborne Road and Portobello Road, as well as the transport links of Westbourne Park underground station (Hammersmith & City and Circle Lines).

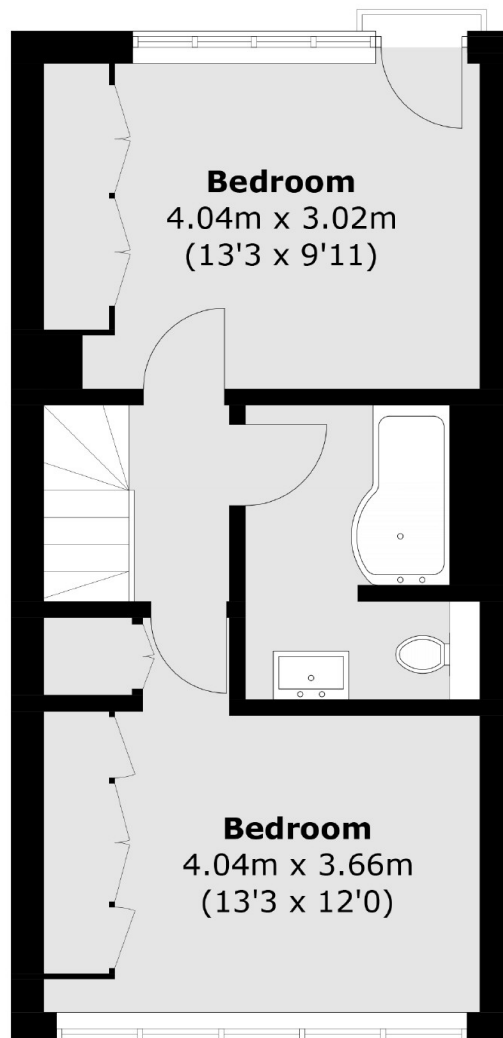
### Features

- Two Bedrooms
- Separate Kitchen
- Wooden Flooring
- Over 700 Sq.Ft
- Close To Amenities
- North Kensington

# Hazlewood Crescent, London, W10



**Third Floor**



**Fourth Floor**

Total area (approx.): 71.4 sq. m (768.4 sq. ft)