



Stone Acre Lodge



Stone Acre Lodge

Lansdowne Court, Lansdowne Road, Torquay, TQ2 5BP

Exeter 22 miles Dartmouth 11 miles Totnes 10 miles

A unique three/four-bedroom detached bungalow with private off-road parking, Open-plan kitchen, modern bathroom and large rooms.

- NO ONWARD CHAIN
- Open-plan kitchen/Diner
- Modern Bathroom
- Courtyard Garden
- Council Tax Band: C
- Off-Street Parking
- Close to Town Centre & Coastline
- Double Bedrooms
- Shower Room & Bathroom
- Freehold

£280,000

This unique three/four-bedroom detached bungalow offers versatile living in a convenient location close to the town centre, local shops, and amenities. With private off-road parking and a distinctive design, the property provides flexible accommodation suitable for a variety of lifestyles.

The ground floor features a bright entrance hall with under-stairs storage leading to a spacious open-plan kitchen/diner fitted with modern gloss units, integrated appliances, and a breakfast bar. This room offers the flexibility to serve as a combined kitchen and living area if desired. Also on this level are a comfortable lounge, which could alternatively be used as a fourth bedroom, a small double bedroom or study, and a well-presented family bathroom.

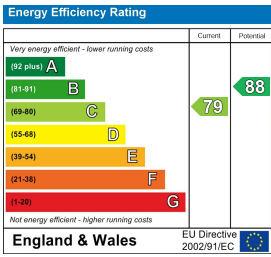
Upstairs, the property benefits from two generously sized double bedrooms, each with Velux windows and sloping ceilings that add character and natural light. A modern shower/wet room completes the first floor, featuring LED lighting, a low-level WC, wash basin, and open shower area.

Externally, there is a small private gravel garden to the side, ideal for low-maintenance outdoor enjoyment, along with space for storage or a shed to the rear. The home also includes parking for up to two cars via a private driveway and allocated space within the communal parking area. Currently tenanted, the property presents an ideal investment opportunity but can also be sold with vacant possession.





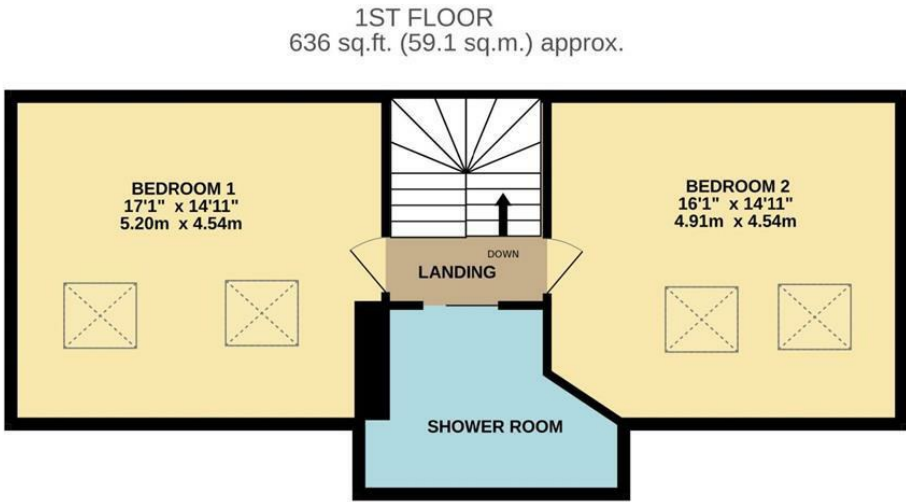
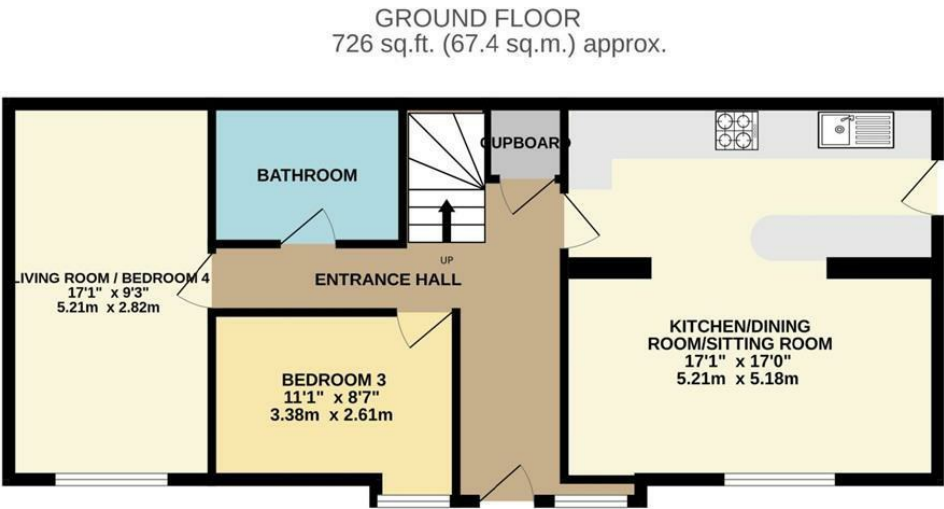
IMPORTANT: Stags gives notice that: 1. These particulars are a general guide to the description of the property and are not to be relied upon for any purpose. 2. These particulars do not constitute part of an offer or contract. 3. We have not carried out a structural survey and the services, appliances and fittings have not been tested or assessed. Purchasers must satisfy themselves. 4. All photographs, measurements, floorplans and distances referred to are given as a guide only. 5. It should not be assumed that the property has all necessary planning, building regulation or other consents. 6. Whilst we have tried to describe the property as accurately as possible, if there is anything you have particular concerns over or sensitivities to, or would like further information about, please ask prior to arranging a viewing.



6 Vaughan Parade, Torquay,
TQ2 5EG

torquay@stags.co.uk

01803 200160



TOTAL FLOOR AREA : 1362 sq.ft. (126.5 sq.m.) approx.
Whilst every attempt has been made to ensure the accuracy of the floorplan contained here, measurements of doors, windows, rooms and any other items are approximate and no responsibility is taken for any error, omission or mis-statement. This plan is for illustrative purposes only and should be used as such by any prospective purchaser. The services, systems and appliances shown have not been tested and no guarantee as to their operability or efficiency can be given.
Made with Metropix ©2025.



@StagsProperty

Cornwall | Devon | Somerset | Dorset | London