



11, The Maltings, Stevenage

SG2 7NB

Price Guide £600,000



[stevenoates.com](https://www.stevenoates.com)



## 11 The Maltings, Walkern, Stevenage, SG2 7NB

A spacious and well-presented four bedroom detached family home, tucked away in a quiet cul-de-sac in the popular village of Walkern.

The property has been extended to the rear and offers a large lounge, an impressive open-plan kitchen/dining room with bi-fold doors to the garden, downstairs WC, four bedrooms, an en-suite to the main bedroom and a modern family bathroom.

Outside, there is a driveway providing off-road parking, a garage and a private rear garden with patio, lawn and countryside views beyond.

Walkern is a sought-after village approximately 4 miles from Stevenage station, with fast links into London Kings Cross. The village offers a convenience store, pub, restaurants, tea rooms, garage and a well-regarded primary school.



70 Fore Street, Hertford, Hertfordshire, SG14 1BY



70 Fore Street, Hertford, Hertfordshire, SG14 1BY

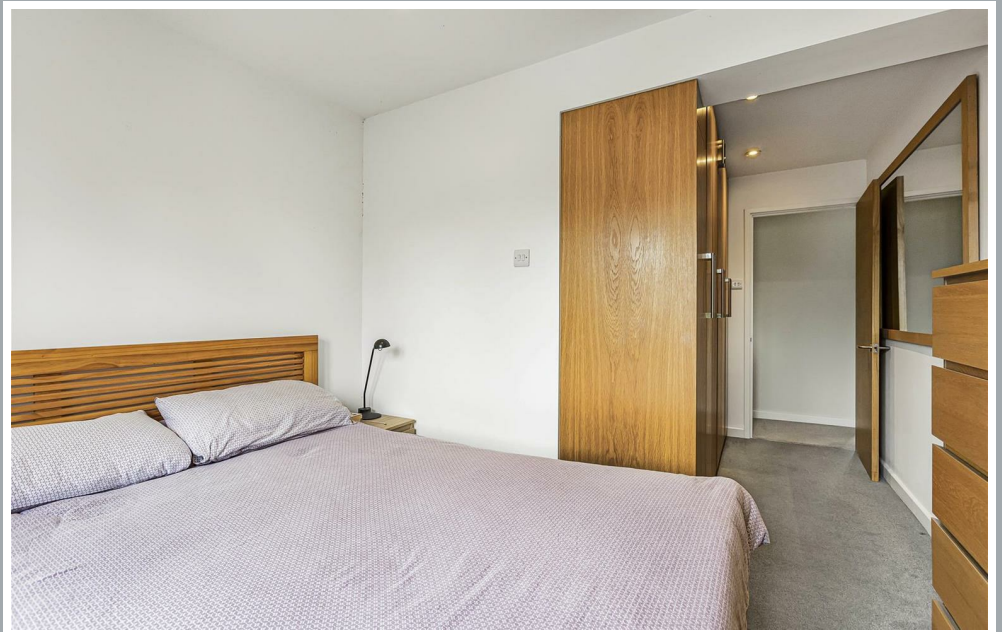
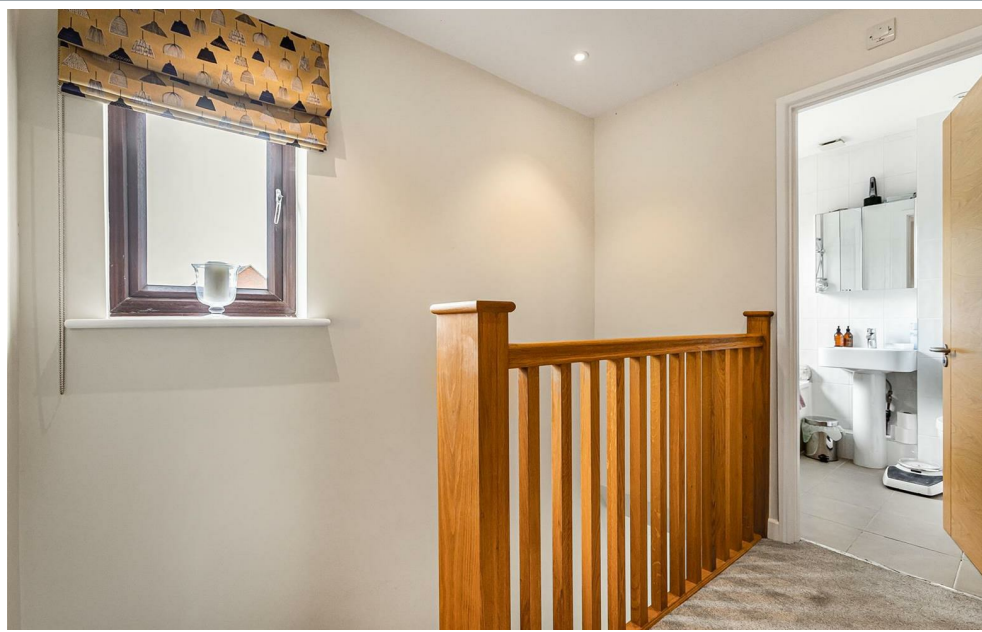


70 Fore Street, Hertford, Hertfordshire, SG14 1BY





70 Fore Street, Hertford, Hertfordshire, SG14 1BY



70 Fore Street, Hertford, Hertfordshire, SG14 1BY



70 Fore Street, Hertford, Hertfordshire, SG14 1BY



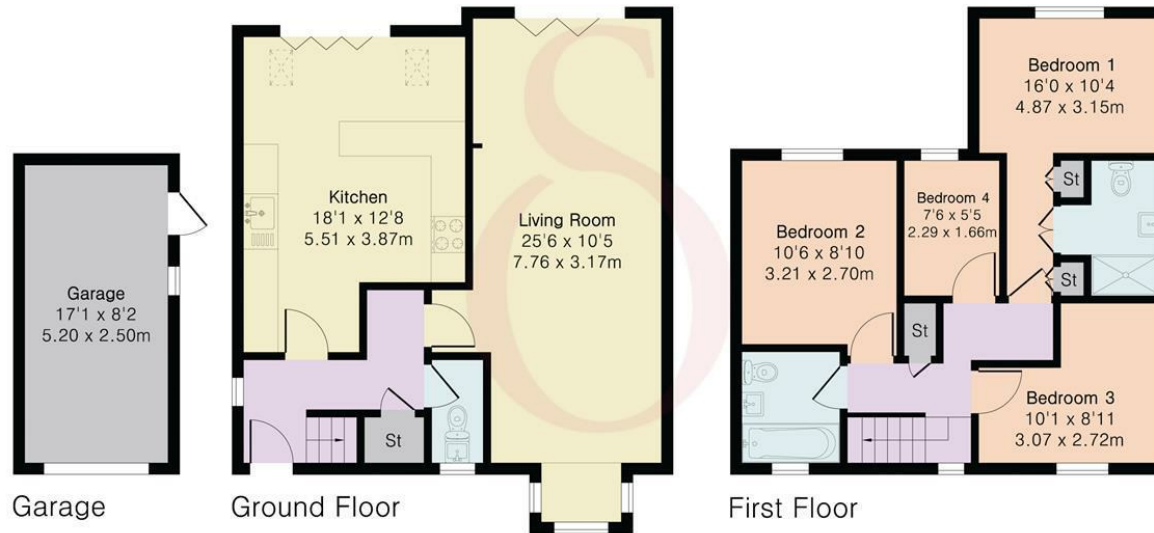
70 Fore Street, Hertford, Hertfordshire, SG14 1BY

**Approximate Gross Internal Area 1109 sq ft - 103 sq m  
(Excluding Garage)**

Ground Floor Area 611 sq ft – 57 sq m

First Floor Area 498 sq ft – 46 sq m

Garage Area 140 sq ft – 13 sq m



Floor plan produced in accordance with RICS Property Measurement 2nd Edition. Although Pink Plan Ltd ensures the highest level of accuracy, measurements of doors, windows and rooms are approximate and no responsibility is taken for error, omission or misstatement. These plans are for representation purposes only and no guarantee is given on the total square footage of the property within this plan. The figure icon is for initial guidance only and should not be relied on as a basis of valuation.



These particulars, whilst believed to be accurate are set out as a general outline only for guidance and do not constitute any part of an offer or contract. Intending purchasers should not rely on them as statements of representation of fact, but must satisfy themselves by inspection or otherwise as to their accuracy. No person in this firm's employment has the authority to make or give any representation or warranty in respect of the property.

