



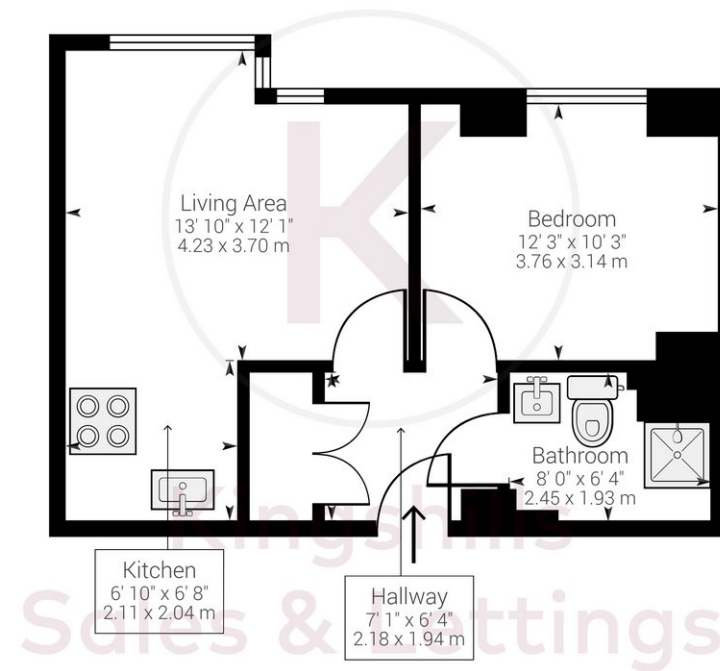
Property Description

A stylish one-bedroom apartment set within the sought-after Castle House development, ideally positioned in the heart of High Wycombe town centre. This modern and contemporary development offers residents the convenience of secure gated parking while being just moments from the town's excellent amenities, shops, restaurants, cafés and transport links.

The apartment itself is beautifully presented throughout and offers bright, well-proportioned accommodation comprising an entrance hallway with useful built-in storage housing the washing machine, a light and airy open-plan living room leading into a modern fitted kitchen complete with integrated dishwasher, a spacious double bedroom, and a stylish shower room.

COUNCIL TAX B

EPC RATING D



Approximate net internal area: 434.89 ft² / 40.40 m²
While every attempt has been made to ensure accuracy, all measurements are approximate, not to scale. This floor plan is for illustrative purpose only and should be used as such by any prospective tenant or purchaser.

Powered by Giraffe360

Kingshills Estate Agents
Comet Studios
Amersham
Buckinghamshire
HP7 0PX

01494 939868
hello@kingshills.co.uk
kingshills.co.uk

Agents Note: Whilst every care has been taken to prepare these particulars, they are for guidance purposes only. All measurements are for general guidance purposes only and whilst every care has been taken to ensure accuracy, they should not be relied upon and potential buyers/tenants are advised to recheck the measurements