



Amory Tower

203 Marsh Wall, E14

£2,800 per month
(£646.15 per week)

A 55th floor one bedroom apartment situated within the popular development of Amory Tower, E14. The property benefits from unobstructed river and city views, a private balcony and furnished to a high-quality level. With 24h concierge and gym.

CHESTERTONS



Amory Tower

203 Marsh Wall, E14

- 24h concierge
- Amory tower in the heart of Canary Wharf
- swimming pool and gym facilities



A 55th floor one bedroom apartment situated within the popular development of Amory Tower E14. The property benefits from unobstructed river and city views, a private balcony and furnished to a high-quality level.

Minimum Term: 12 months
Deposit Required: £3,230.77
Local Authority: Tower Hamlets
Council Tax Band: E
EPC Rating: B
Furnished

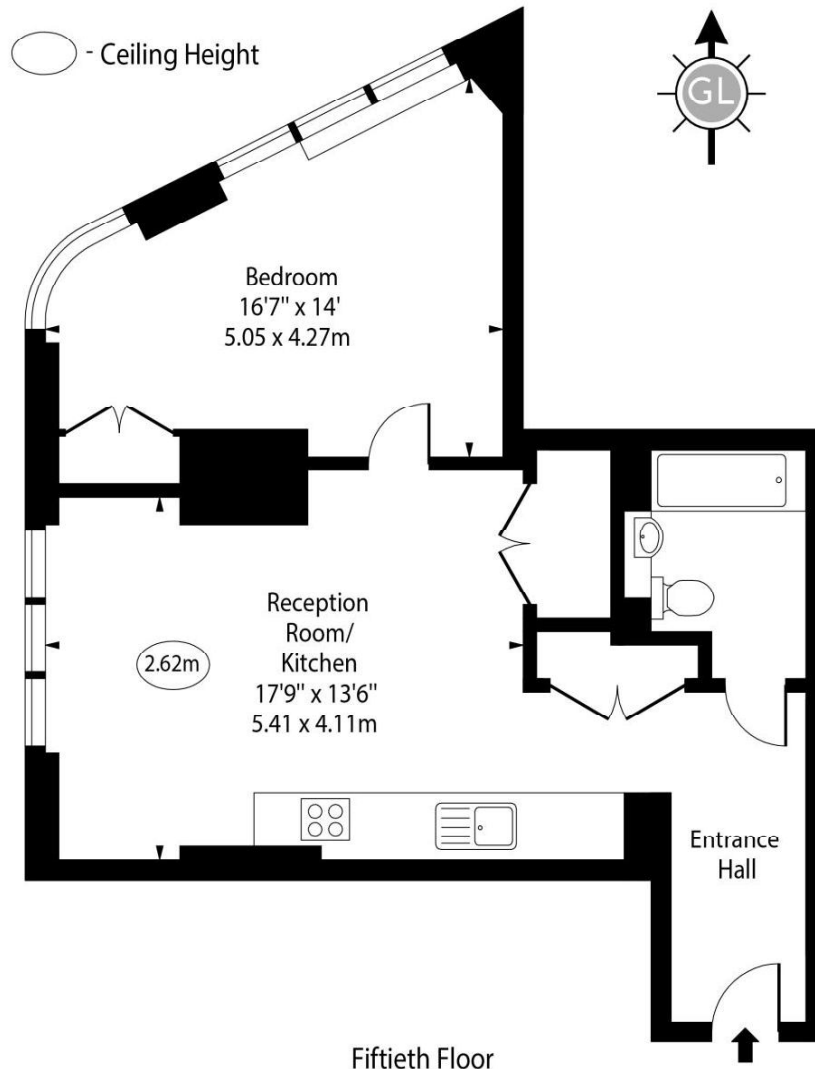
Score	Energy rating	Current	Potential
92+	A		
81-91	B	85 B	85 B
69-80	C		
55-68	D		
39-54	E		
21-38	F		
1-20	G		

Chestertons Canary Wharf & Greenwich Lettings

Harbour Island
 28 Harbour Exchange Square
 Canary Wharf & Docklands
 London
 E14 9GE
 canarywharflettingsusers@chestertons.co.uk
 02075108310

Additional tenant charges apply (fees apply to non-AST tenancies only)
 Tenancy Agreement Fee: £300
 References per Tenant/Guarantor: £60
 Inventory check (approx. £100 – £250 inc. VAT)
chestertons.co.uk/property-to-rent/applicable-fees

Amory Tower, Marsh Wall, E14



Approx Gross Internal Area 637 Sq Ft - 59.18 Sq M

Every attempt has been made to ensure the accuracy of the floor plan shown. However, all measurements, fixtures, fittings, and data shown are approximate interpretations and for illustrative purposes only. Measured according to the RICS. Not To Scale.

www.goldlens.co.uk
Ref. No. 031288K

