



OVER 60?

Secure this property
for up to **59% less!**

Guide Price
£340,000

Freehold

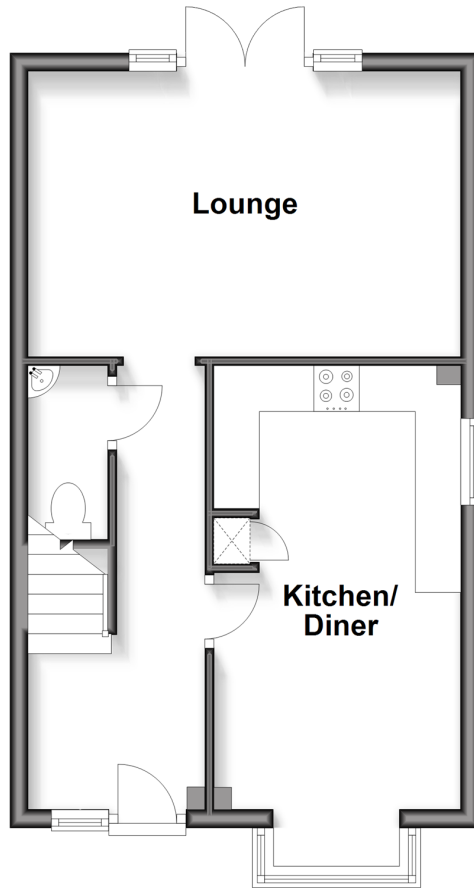
3x  2x  1x 

**Aurum Close,
Whitstable, Kent, CT5**

Wards
Helping you move forwards

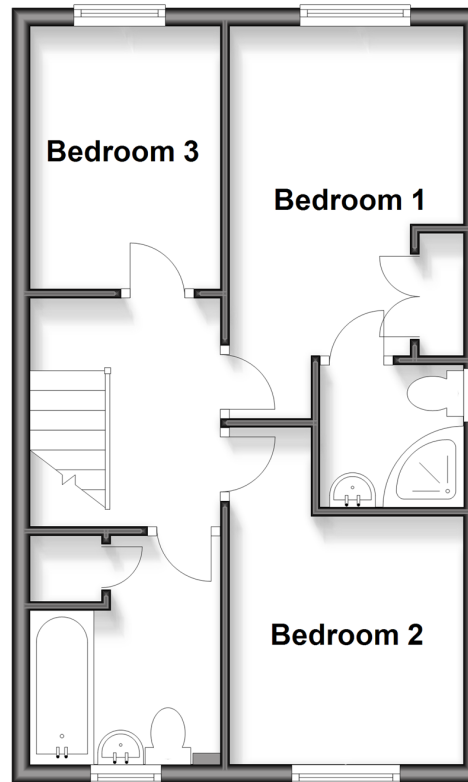
Ground Floor

Approx. 38.7 sq. metres (416.2 sq. feet)



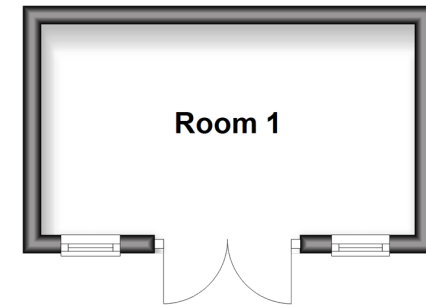
First Floor

Approx. 38.3 sq. metres (411.8 sq. feet)



Outbuilding

Approx. 9.4 sq. metres (101.4 sq. feet)



Accommodation

GROUND FLOOR

Hallway

Kitchen/Diner: 18'11 x 8'10 (5.77m x 2.69m)

Cloakroom

Lounge: 15'9 x 10'1 (4.80m x 3.08m)

FIRST FLOOR

Landing

Bedroom 1 : 11'10 x 8'8 (3.61m x 2.64m)

Ensuite Shower Room

Bedroom 2 : 12'3 x 8'8 (3.74m x 2.64m)

Bedroom 3: 9'4 x 6'10 (2.85m x 2.08m)

Bathroom

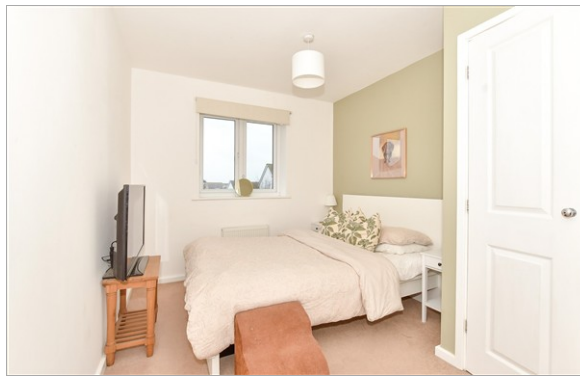
OUTSIDE

Driveway

Rear Garden

OUTBUILDING

Summer House



Main features

- Bright and welcoming lounge with direct access to the garden
- Modern kitchen/dining area
- Brand-new garden summerhouse, fully powered and professionally plastered internally
- Attractive private garden with new patio and lawn area
- Peaceful cul-de-sac location, with off-street parking for two vehicles at the front



Nearest Schools

Primary Schools: Swalecliffe Community Primary 0.7 miles, St Mary's Catholic Primary 0.7 miles, Whitstable Junior School 1.1 miles

Secondary School: The Whitstable School 0.5 miles



Transport Information

Train Stations: Whitstable 0.7 miles, Chestfield & Swalecliffe 0.9 miles, Herne Bay 3.0 miles



Address

Aurum Close, Whitstable, Kent, CT5



Directions

For directions to this property please contact us.



Wards
Helping you move forwards

Call Whitstable Branch 01227 772272 ■ wardsof Kent.co.uk



- The seller is a person connected with Wards as defined in the Estate Agents Act 1979
- Appliances & services are untested, dimensions are approximate and floor plans are not to scale

- Legal advice should be taken to verify fixtures/fittings, planning, alterations and/or lease details
- Through a Homewise Home For Life Plan people aged 60+ can secure this property for up to 59% less, by purchasing a Lifetime Lease



12033954/20260117/CJ/NF