

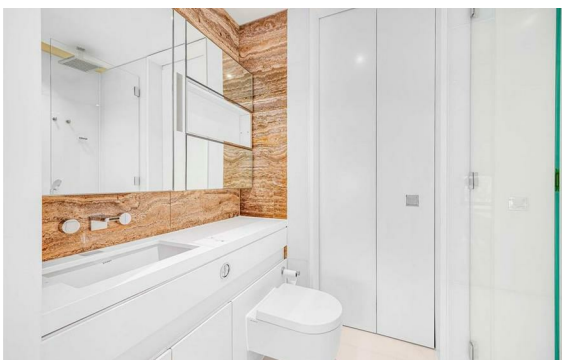
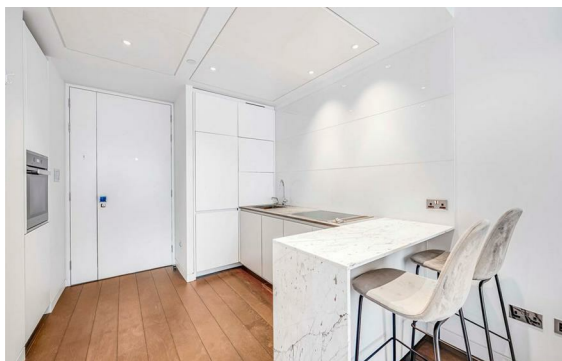


Bentinck Street, Marylebone, London, W1U

Rent £950 PCM

1 Bed | 1 Bath | 1 Reception

Please call us on 020 7724 2233 or email us info@newingtonstates.com to book a viewing.



A beautifully refurbished one-bedroom apartment offering exceptional finishes and contemporary living in a prestigious central London location. The property features a bright open-plan reception and kitchen, a spacious double bedroom with a walk-in wardrobe, and a stylish modern bathroom.

Ideally located moments from Marylebone High Street, Baker Street Station, Bond Street Station, Regent's Park, and a wide range of boutique shops, cafés, and restaurants.

EPC Rating: D

Energy Efficiency Rating: D

Agents Note: Whilst every care has been taken to prepare these particulars, they are for guidance purposes only. All measurements are approximate and are for general guidance purposes only and whilst every care has been taken to ensure their accuracy, they should not be relied upon and potential buyers/tenants are advised to recheck the measurements.

NEWINGTON
— ESTATES —

60 Upper Montagu Street

London

W1H 1SN

020 7724 2233

info@newingtonestates.com

<http://www.newingtonestates.com>