



Let **UK** Home

**2 Bedrooms**

**Flat**

Located in Salford

**£1,400 Per Month**



[padmin@letukhome.co.uk](mailto:padmin@letukhome.co.uk)

<https://www.letukhome.co.uk/>

01615219812



# Hulme Street Salford

M5 4ZE



Let UK Home present this two en-suite apartment with balcony at Local Crescent Manchester M5.

Situated in a vibrantly rejuvenated area of Salford dubbed The Crescent, Local Crescent is truly luxurious from the moment you walk in. Its superb location offers tenants unrivalled views across the city, the River Irwell and the acres of surrounding parkland. Residents can also enjoy access to amenities that go far above-and-beyond the usual city-centre offering.

#### Apartment features:

- Floor to ceiling windows offering an abundance of ingeniously maximised natural sunlight
- Fully fitted kitchen with a washer/dryer and a dishwasher
- The bedroom is ample sized with space for storage and the bathroom is also well sized

#### Property Amenities:

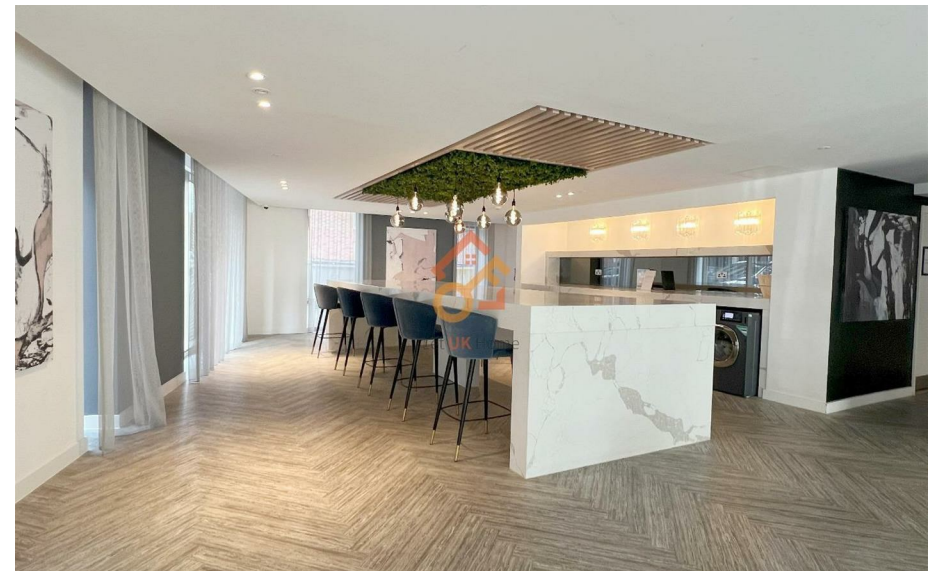
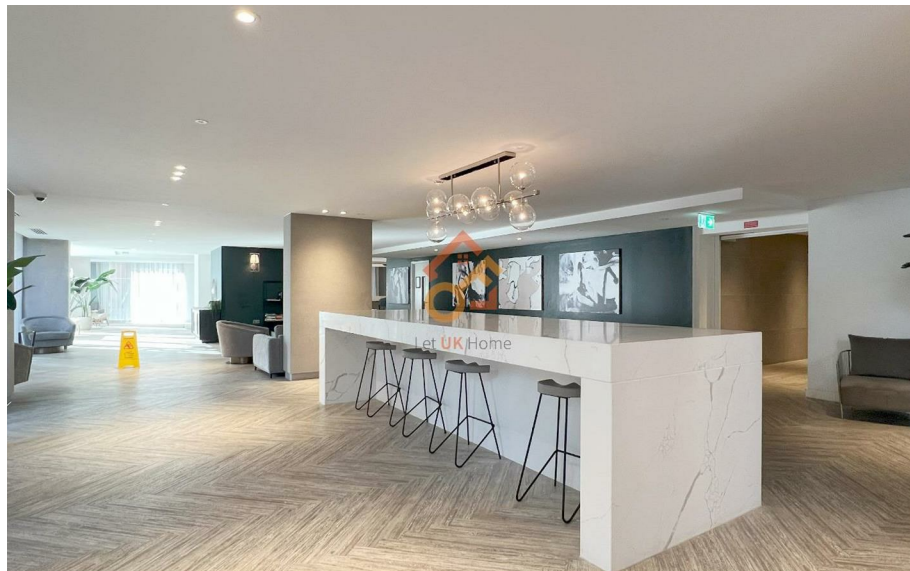
- Indoor swimming pool, spa, sauna, steam room and jacuzzi
- Fully equipped gym and fitness/yoga studio
- Cinema rooms
- Residents' communal lounges
- Launderette
- 24/7 concierge service
- Secure bike storage
- Secure key-fob entry and CCTV

# Hulme Street Salford

£1,400 Per Month

- 24/7 Concierge Service
- The Gym
- Secure Bike Storage
- Cinema & Game Room
- Residents Lounge

- Swimming Pool
- The Spa
- Secure key-fob entry and CCTV
- Sauna & Steam Room
- EPC Rating: B





Let **UK** Home

1/F, St James Tower 7 Charlotte  
Street  
Manchester  
M1 4DZ

01615219812

[pmadmin@letukhome.co.uk](mailto:pmadmin@letukhome.co.uk)

**Council Tax Band: C**

**Local Authority:**

Agents Note: Whilst every care has been taken to prepare these particulars, they are for guidance purposes only. All measurements are approximate and are for general guidance purposes only and whilst every care has been taken to ensure their accuracy, they should not be relied upon and potential buyers/tenants are advised to recheck the measurements.

Energy Efficiency Rating		Current	Potential
Very energy efficient - lower running costs			
(92 plus) A			
(81-91) B			
(69-80) C			
(55-68) D			
(39-54) E			
(21-38) F			
(1-20) G			
Not energy efficient - higher running costs			
<b>England &amp; Wales</b>		EU Directive 2002/91/EC	

<https://www.letukhome.co.uk/>