



Fleet Street

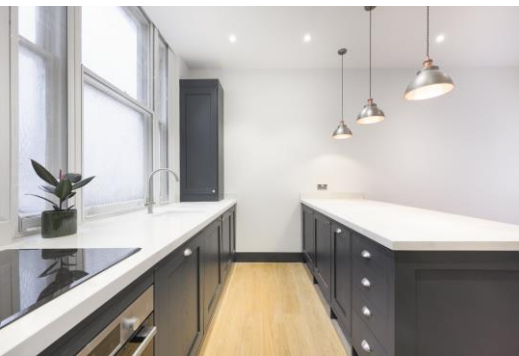
Temple, EC4Y

Asking Price £750,000

History on your doorstep. London at your feet.

A rare opportunity to occupy a beautifully renovated, first-floor apartment on one of London's most storied addresses. Measuring a generous 665 sq ft, this thoughtfully designed apartment offers an exceptional open-plan kitchen and reception room ideal for modern living, a large principal bedroom, and a versatile study or entrance room that lends itself equally well to a home office or guest space. Freshly updated throughout, the apartment enjoys a calm and elevated feel whilst sitting at the very heart of the capital — steps from St Paul's Cathedral and the Thames, with the City, Temple and Blackfriars all within easy reach.

CHESTERTONS



Fleet Street

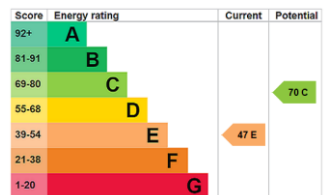
Temple, EC4Y

- First floor position
- Freshly renovated
- Open-plan kitchen & reception
- Double bedroom
- Study / Large entrance room
- 665 sq ft throughout



Fleet Street EC4Y sits at the boundary of the City and the Strand, steeped in centuries of legal, literary and press heritage. St Bride's Church, Temple Church, the Royal Courts of Justice and Ye Olde Cheshire Cheese are all moments away, while St Paul's Cathedral and the Embankment are a short stroll. The area is served by an exceptional range of independent and well-known eateries, bars and cultural landmarks.

Tenure: Leasehold 120 years
Service Charge: £756.96 per year
Ground Rent: £200 per year
Local Authority: City of London
Council Tax Band: F

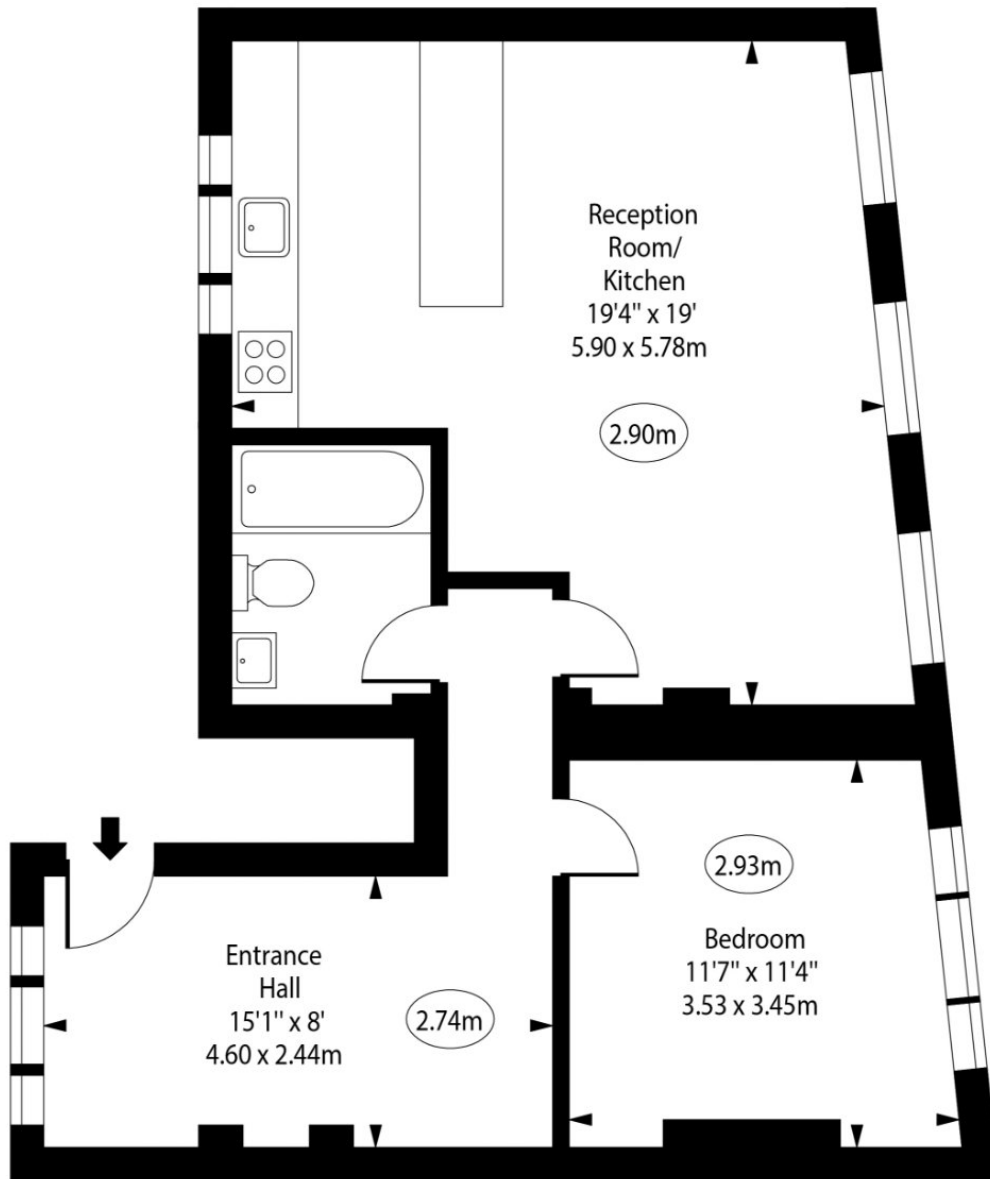
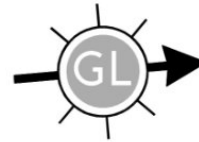


Chestertons Covent Garden Sales

196 Shaftesbury Avenue
 London
 WC2H 8JF
 coventgarden@chestertons.co.uk
 020 3040 8300
 chestertons.co.uk

Fleet Street

○ - Ceiling Height



First Floor

Approx Gross Internal Area 665 Sq Ft - 61.78 Sq M

For Illustration Purposes Only - Not To Scale

www.goldlens.co.uk

Ref. No. 026467R

