



Hardwick Street, EC1R

£695,000

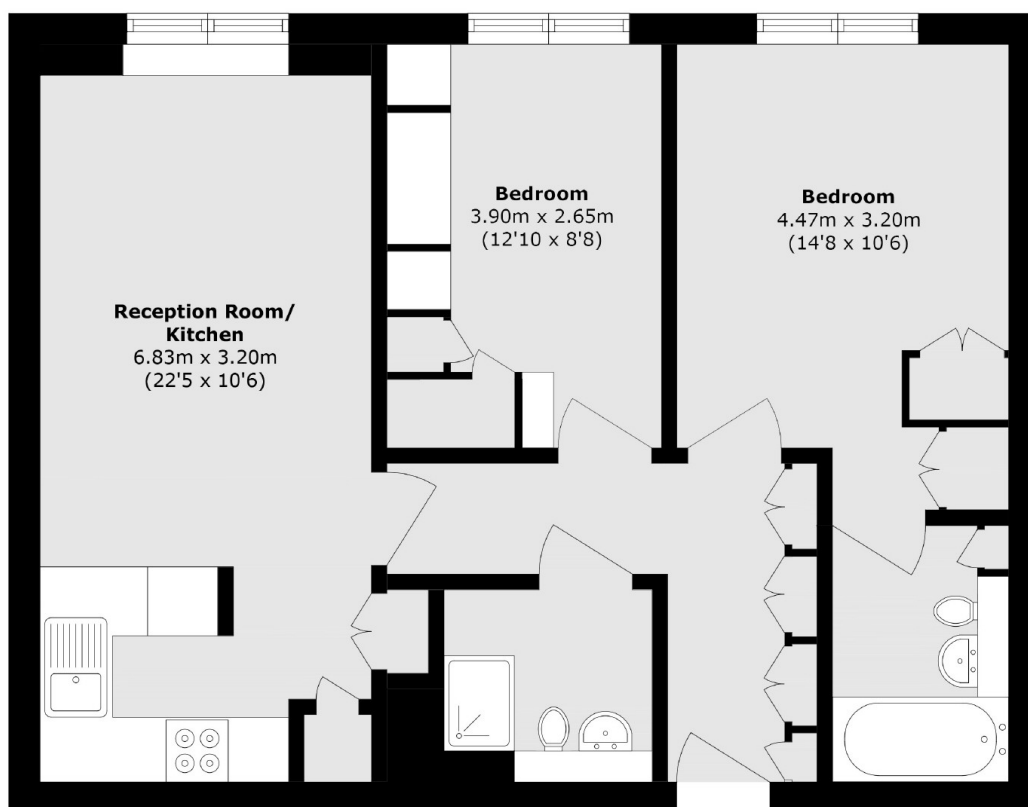
Set on the second floor of the sought-after Hydra Building, this beautifully presented two-bedroom, two-bathroom flat offers a peaceful retreat in the heart of central London. Featuring a spacious open-plan kitchen and living area with a Juliette balcony, the home is both stylish and functional. The generously sized bedrooms include a principal suite with en-suite, complemented by ample built-in storage throughout.

Located in the heart of London's Clerkenwell neighbourhood, with Angel Station on the Northern Line just 0.3 miles away and the vibrant Exmouth Market with its bars and restaurants even closer. Additionally, both the City and West End are within easy reach.

Features

- Two Bedrooms
- Two Bathrooms
- Juliette Balcony
- Underfloor heating
- Centrally Located

Hardwick Street, London, EC1R



Total area (approx.): 66.6 sq. m (716.8 sq. ft)

Dexters

Islington
76 Upper Street
London
N1 0NU
Sales
020 7483 6373

Energy Rating: C. We aim to make our particulars both accurate and reliable. However they are not guaranteed; nor do they form part of an offer or contract. If you require clarification on any points then please contact us, especially if you're traveling some distance to view. Please note that appliances and heating systems have not been tested and therefore no warranties can be given as to their good working order.

 **RICS** | Regulated
Estate Agent
and Letting Agent

dexters.co.uk