



Wellmeadow Road, SE6

£500,000

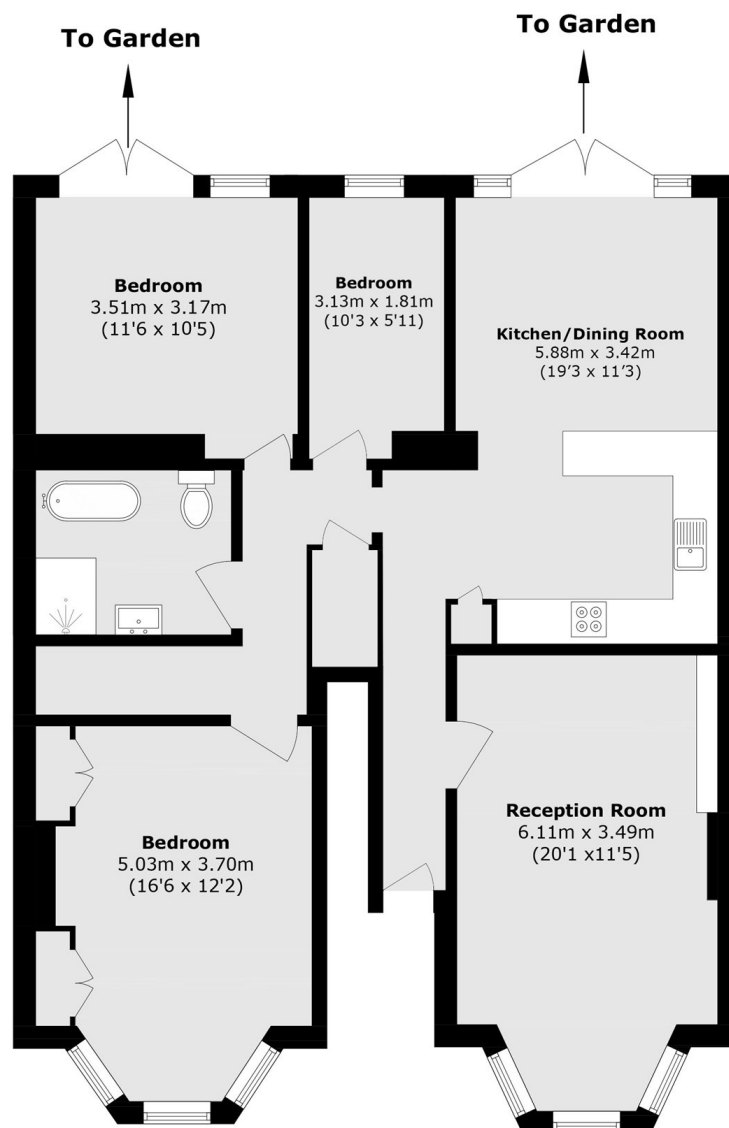
Spanning the entire ground floor of a double fronted Corbett house and measuring over 1,065 Sq Ft this flat is in excellent condition throughout. There is a generous and characterful bay fronted reception room, two double bedrooms and a versatile third all served by a beautifully remodelled four-piece bathroom suite. To the rear of the property a large kitchen diner leads out to a broad private garden.

Wellmeadow Road is a pretty residential road made of up large family homes. It has convenient access to Hither Green train station and the open spaces of Mountsfield Park and Foster Memorial Park. There are also a number of popular schools locally including Sandhurst, Colfe's and St. Dunstan's College.

Features

- Three Bedrooms
- Large Reception Room
- Side Access
- Smart Kitchen Diner
- Corbett Estate
- Private Garden

Wellmeadow Road, London, SE6



Total area (approx.): 99.0 sq. m (1065.6 sq. ft)

Dexters

Brockley
369 Brockley Road
London
SE4 2AG
Sales
020 8815 2220

Energy Rating: Tbc. We aim to make our particulars both accurate and reliable. However they are not guaranteed; nor do they form part of an offer or contract. If you require clarification on any points then please contact us, especially if you're traveling some distance to view. Please note that appliances and heating systems have not been tested and therefore no warranties can be given as to their good working order.

 **RICS** | Regulated
Estate Agent
and Letting Agent

dexters.co.uk