

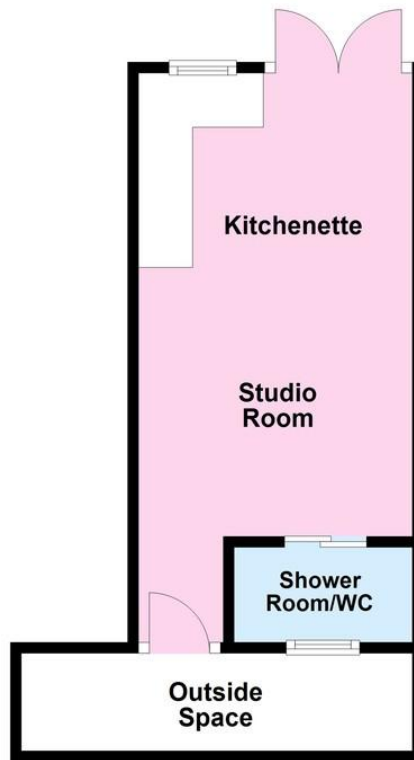


- Studio Room
- Rustington
- Close to Shops & Village
- Single Occupancy
- Bills Included
- Small Outside Space
- Available Immediately
- NO PETS
- Excellent Decorative Order

Studio, Hobbs Way, Rustington BN16 2QU
£750 pcm

Floor Plan

Approx. 14.9 sq. metres (160.5 sq. feet)
(excluding Shower Room/WC)



Total area: approx. 14.9 sq. metres (160.5 sq. feet)

A studio room available to rent in Rustington. Bills included, single occupancy, separate shower room/WC, kitchenette, small private outside space and furnished. Available immediately - NO PETS PERMITTED

OWN ENTRANCE

STUDIO ROOM

17' 2" x 8' 3" (5.23m x 2.51m)

SHOWER ROOM/WC

SMALL PRIVATE OUTSIDE SPACE

The information and measurements contained within these details are for guidance only and do not form part of any contract.



90 THE STREET, RUSTINGTON, WEST
SUSSEX, BN16 3NJ

lettings@hawkemetcalf.co.uk

www.hawkemetcalf.co.uk

01903 850450