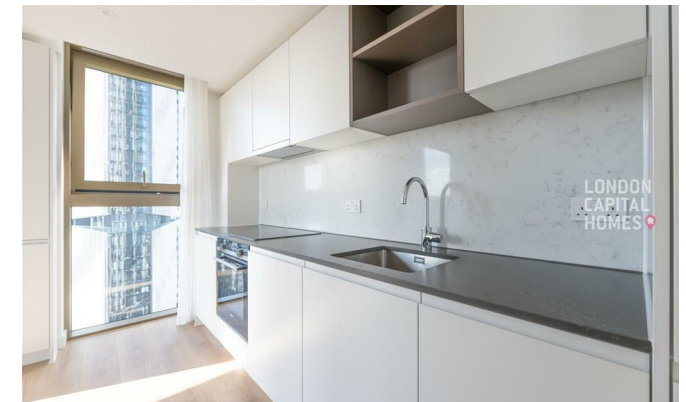


**LONDON  
VICTORIA  
GROUPS** 



## One Thames Quay, 222 Marsh Wall

, LONDON E14 9EN

- Perfectly positioned in the heart of Canary Wharf
- Private sky lounge and communal social spaces
  - Residents' gymnasium
  - CTB-F
- Landscaped podium gardens
- 24-hour concierge service
- EPC-B

**£3,850 PCM**

Local Authority **Tower Hamlets**  
Council Tax Band **F**  
EPC Rating **B**



**London Office Office**

Spaces Victoria, 25 Wilton Road, Pimlico,  
London, SW1V 1LW

**Contact**

020 3084 3094  
[XL@londonvictoriagroups.co.uk](mailto:XL@londonvictoriagroups.co.uk)  
[www.londonvictoriagroups.co.uk](http://www.londonvictoriagroups.co.uk)

Agents Note: Whilst every care has been taken to prepare these particulars, they are for guidance purposes only. All measurements are approximate and for general guidance purposes only and whilst every care has been taken to ensure accuracy, they should not be relied upon and potential buyers/tenants are advised to recheck the measurements.