



## 37 Captains Court Stade Street

Hythe, CT21 6ED

Price £135,000

Pleasantly appointed retirement apartment, offered for sale with no onward chain.

A lift provides access to all floors with the property comprising a hallway, sitting/dining room, kitchen, double bedroom and bathroom/WC.

Well maintained communal gardens surround the property which also benefits from residents parking, a guest suite, laundry along with a residents lounge and dining hall.

The charming seafront and Royal Military Canal are both accessible for delightful walks.

- PURPOSE BUILT RETIREMENT APARTMENT
- LIFT TO ALL FLOORS
- ONE BEDROOM
- CLOSE TO SEAFRONT
- RESIDENTS LOUNGE & DINING HALL
- WARDEN ON SITE
- RESIDENTS PARKING
- NO ONWARD CHAIN
- GUEST SUITE
- OVER 55'S

### Viewing

Please contact our Ashford Office on 01233 646411 if you wish to arrange a viewing appointment for this property or require further information.



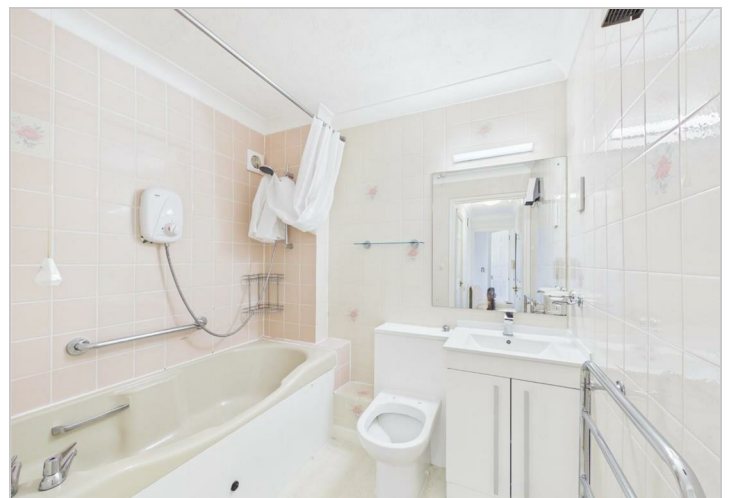
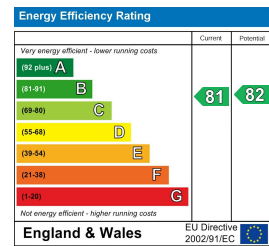
## Floor Plan



## Area Map



## Energy Efficiency Graph



These particulars, whilst believed to be accurate are set out as a general outline only for guidance and do not constitute any part of an offer or contract. Intending purchasers should not rely on them as statements of representation of fact, but must satisfy themselves by inspection or otherwise as to their accuracy. No person in this firm's employment has the authority to make or give any representation or warranty in respect of the property.