

Russell Road, SW19

£525,000

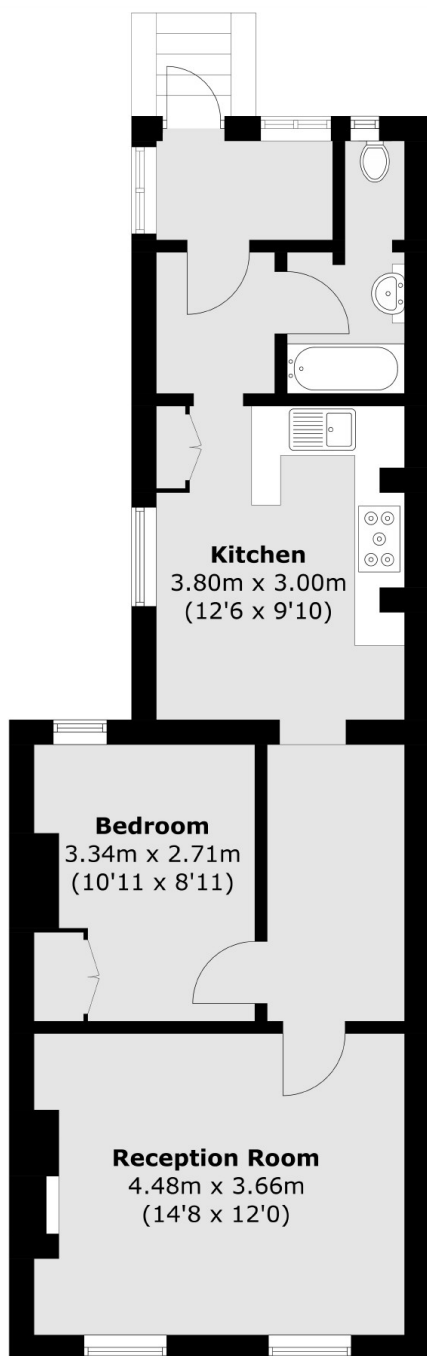
A two double bedroom, split level Victorian maisonette. The property has direct access to a communal garden and is offered to the market with no forward chain.

Russell Road is a quiet road with restricted traffic flow near to Wimbledon Broadway. Perfectly located for young families, being in close proximity to the superb Pelham, St Mary's & Merton Park Primary Schools. Wimbledon Village is also nearby.

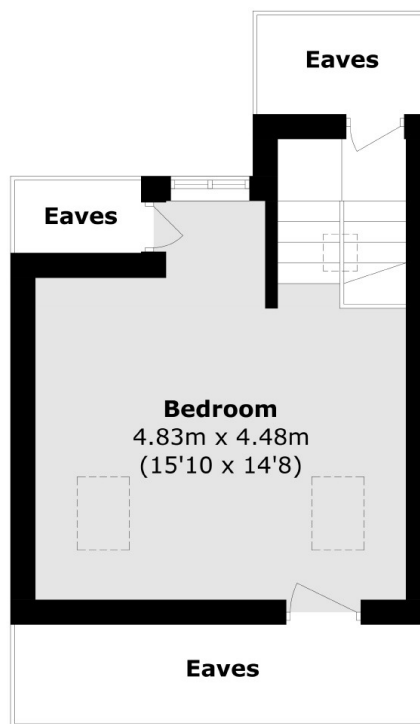
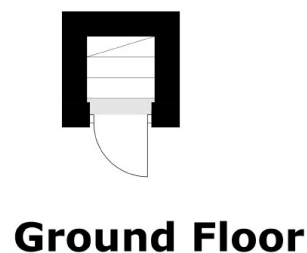
Features

Two Double Bedrooms
Split Level Conversion
Victorian
Near 850 Square Feet
Communal Garden
No Onward Chain

Russell Road, London, SW19



First Floor



Second Floor

Total area (approx.): 76.5 sq. m (823.4 sq. ft)
(Excluding Eaves)