



Waterway Building, 12 Hart Yard, E3 2FW
25% Shared Qwnership

DAVID GREENSLADE 25% SHARE
exp £150,000



Bedrooms: 2 Bathrooms: 2 Receptions: 1

Offered Chain Free. **25% Shared Ownership.** A Spacious & Modern Two Bed Two Bathroom Apartment with views to the London Stadium and The Orbital located on the 6th floor (top) of The Waterway Building, in the vibrant Fish Island, Hackney Wick.

The heart of the home is the bright and spacious open-plan kitchen/living area, perfect for modern entertaining. The kitchen is fully integrated with quality appliances.

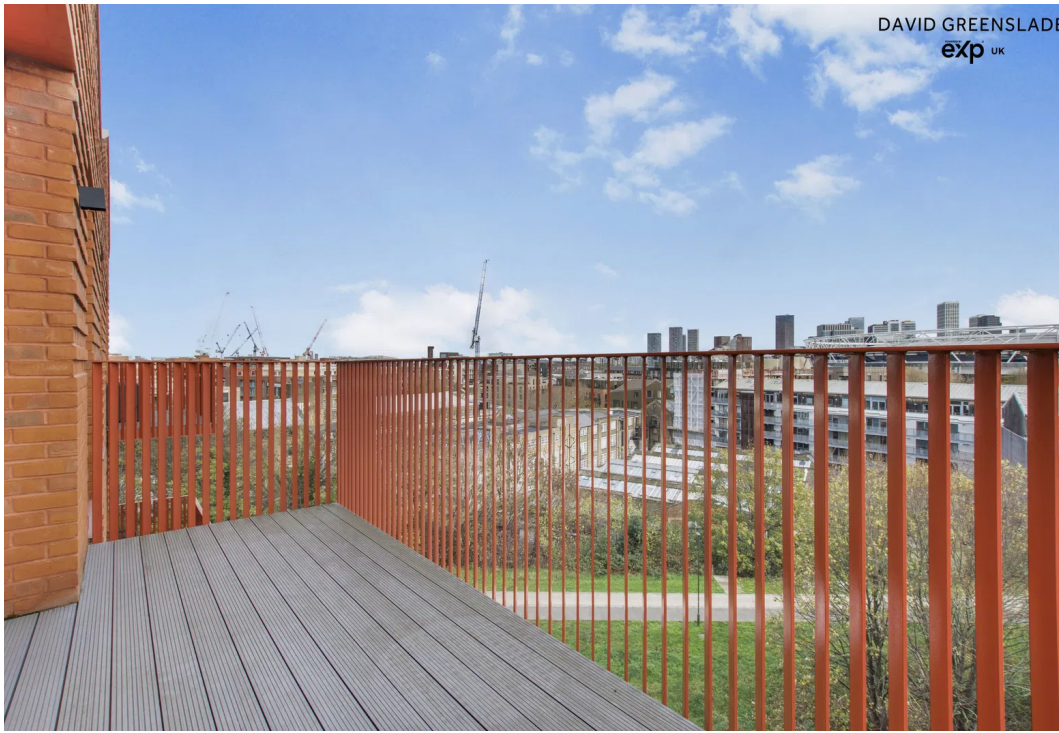
The apartment features two spacious bedrooms, the primary bedroom with its own modern en-suite.

The main bathroom is finished with sleek grey tiling, offering a bathtub, shower, and contemporary fittings.

A highlight is the private, East facing balcony. It provides panoramic skyline views that stretch across East London, directly framing the London Stadium and the vast Queen Elizabeth Olympic Park. It's the ideal spot for your morning coffee or unwinding as the city lights up.

Full Price: £600,000
Share 25%
Share £150,000
Rent: Approx. £1085.pcm
Service Charge: £218.57pcm
Lease Remaining: 117 Years
Council Tax Band: D
EPC: B

++ PLEASE NOTE FURNITURE IS CGI GENERATED FOR MARKETING PURPOSES ++



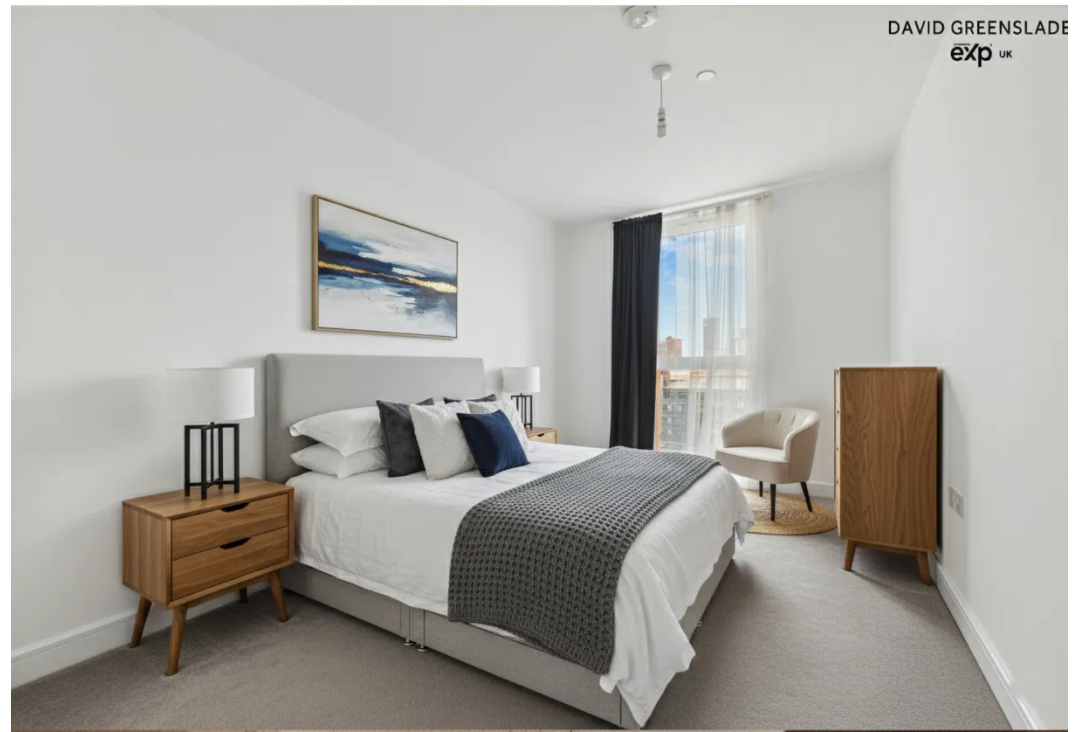
DAVID GREENSLADE
exp UK



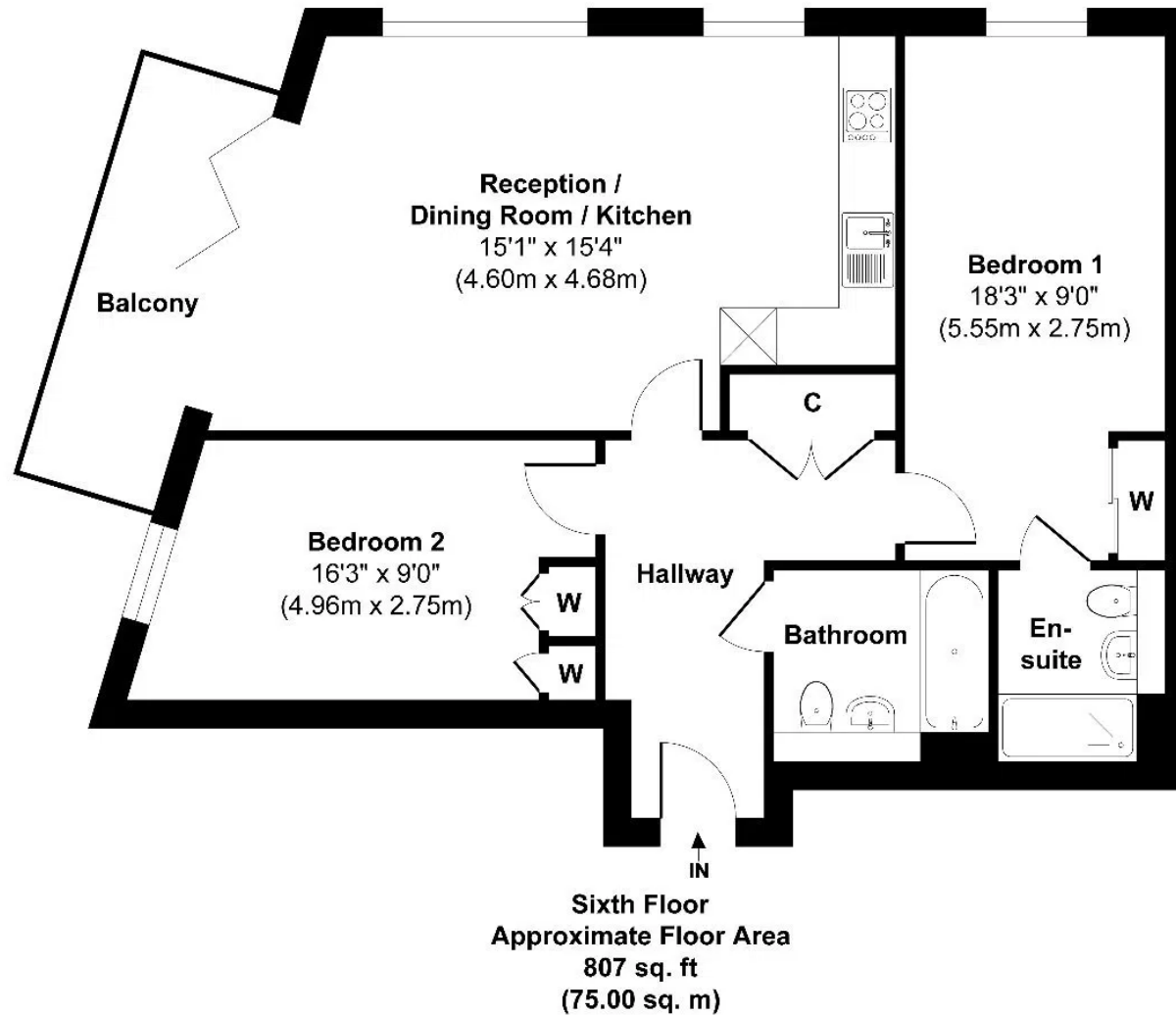
DAVID GREENSLADE
exp UK



DAVID GREENSLADE
exp UK



DAVID GREENSLADE
exp UK



Approx. Gross Internal Floor Area 807 sq. ft / 75.00 sq. m.

Illustration for identification purposes only, measurements are approximate and not to scale, unauthorised reproduction is prohibited.

David Greenslade
Your Personal Estate Agent

DAVID GREENSLADE
exp

02080 500 252 or 07568 567 518
david.greenslade@exp.uk.com
<https://davidgreenslade.exp.uk.com>