



Flat 2, Victoria Place, 108 Anyards Road
£1,800 pcm

DAVIES
PROPERTY PARTNERS



Flat 2

Victoria Place, Cobham

Located just off Cobham High Street, a well-presented light and spacious ground floor apartment with private terrace.

There is a large open-plan reception room with patio doors to the terrace and with kitchen to one end, two spacious double bedrooms with fitted wardrobes, one with en-suite and also a family bathroom.

The apartment offers security entry system and underground parking for one car. There is also a communal garden to share with large lawn and shrubs to the side.

The Landlord is unable to accept pets.

EPC Rating: C

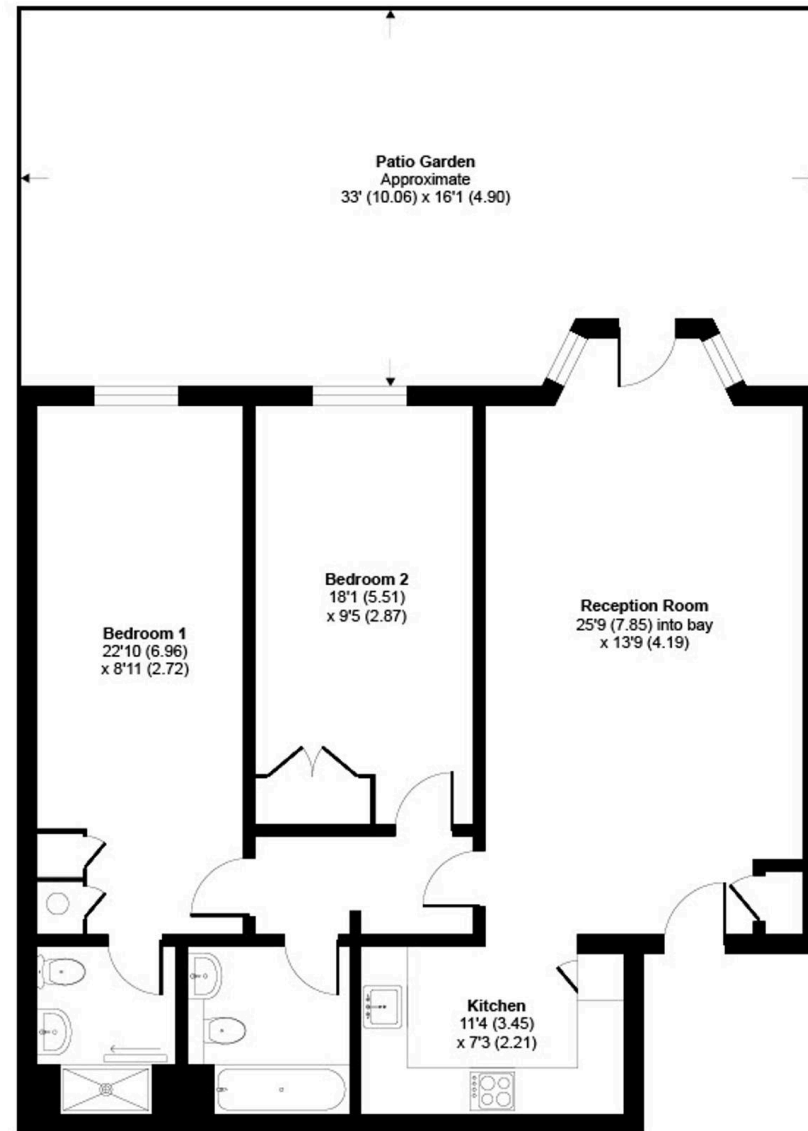
Council Tax Band: E



Anyards Road, KT11

Approximate Area = 970 sq ft / 90.1 sq m

For identification only - Not to scale



GROUND FLOOR



Floor plan produced in accordance with RICS Property Measurement Standards incorporating International Property Measurement Standards (IPMS2 Residential). © nitchecom 2023. Produced for Grosvenor. REF: 1013382