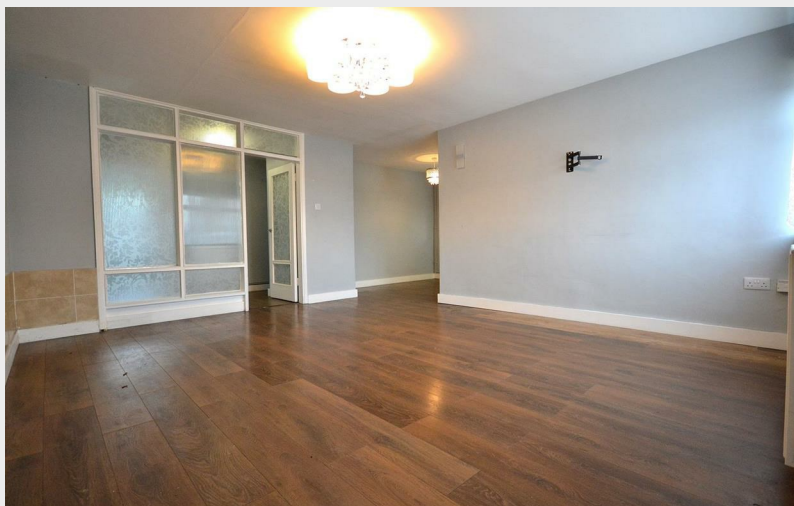


Field End Close, Gaywood, PE30 4AZ

£299,999



Welcome to this spacious THREE bedroom link detached bungalow in the sought-after Field End Close, Gaywood. This property boasts a spacious 958 sq ft of living space, featuring living room, dining room, three bedrooms, bathroom and garden room.



Open House King's Lynn  
sales & lettings  
T: 01553675042  
E: [kingslynn@localagent.co.uk](mailto:kingslynn@localagent.co.uk)  
[www.openhousekingslynn.co.uk](http://www.openhousekingslynn.co.uk)

### Ground Floor

Approx. 103.2 sq. metres (1111.1 sq. feet)



Total area: approx. 103.2 sq. metres (1111.1 sq. feet)