



**8 Maple Close, Storth Lane**  
South Normanton, DE55 3BH

**£1,300 PCM**



## 8 Maple Close, Storth Lane

South Normanton, DE55 3BH

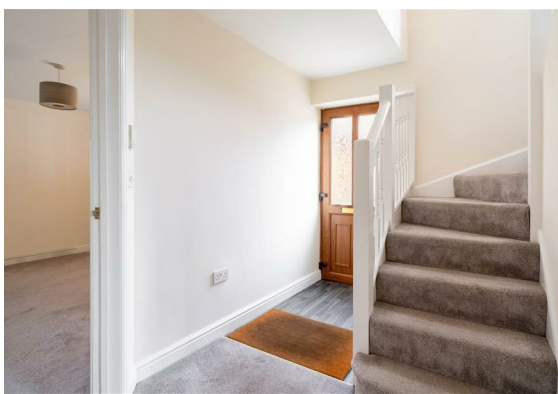
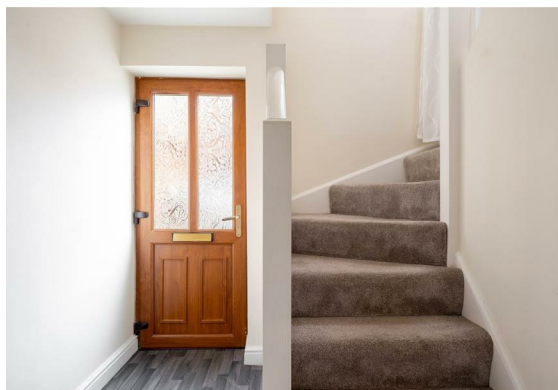
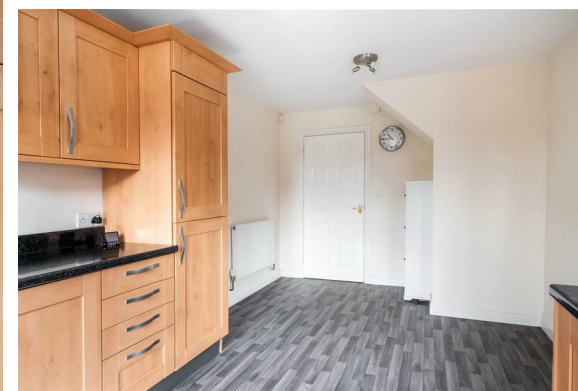
A well-presented three-bedroom detached home, situated in a quiet cul-de-sac in South Normanton.

The property briefly comprises a spacious living area, a large fitted kitchen with integrated appliances, and a convenient downstairs WC. To the first floor, there is a generous master bedroom with en-suite, two further bedrooms, and a modern family bathroom.

Externally, the home benefits from an integral garage and rear garden.

Ideally located close to Junction 28 of the M1.

### Rental information





## Floor Plan



## Viewing

Please contact our Chesterfield Office on 01246 567540 if you wish to arrange a viewing appointment for this property or require further information.

These particulars, whilst believed to be accurate are set out as a general outline only for guidance and do not constitute any part of an offer or contract. Intending purchasers should not rely on them as statements of representation of fact, but must satisfy themselves by inspection or otherwise as to their accuracy. No person in this firm's employment has the authority to make or give any representation or warranty in respect of the property.

## Area Map



## Energy Efficiency Graph

