



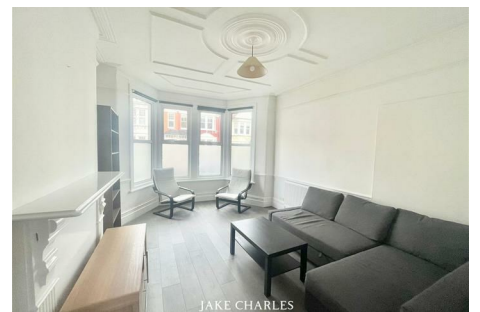
JAKE CHARLES



JAKE CHARLES



JAKE CHARLES



JAKE CHARLES

Jake Charles Property are proud to offer this light and spacious one bedroom flat on the ground floor of a semi detached Edwardian conversion, located in the heart of Palmers Green and within easy reach of the mainline rail Station, bus links and local amenities.

The property boasts a large reception room with stunning bay windows, offering plenty of natural light. A separate fitted kitchen, a beautiful fitted tiled bathroom and a really good size double bedroom which has direct access leading onto a huge private rear patio & garden area. This fantastic flat comes furnished and is definitely a must see!

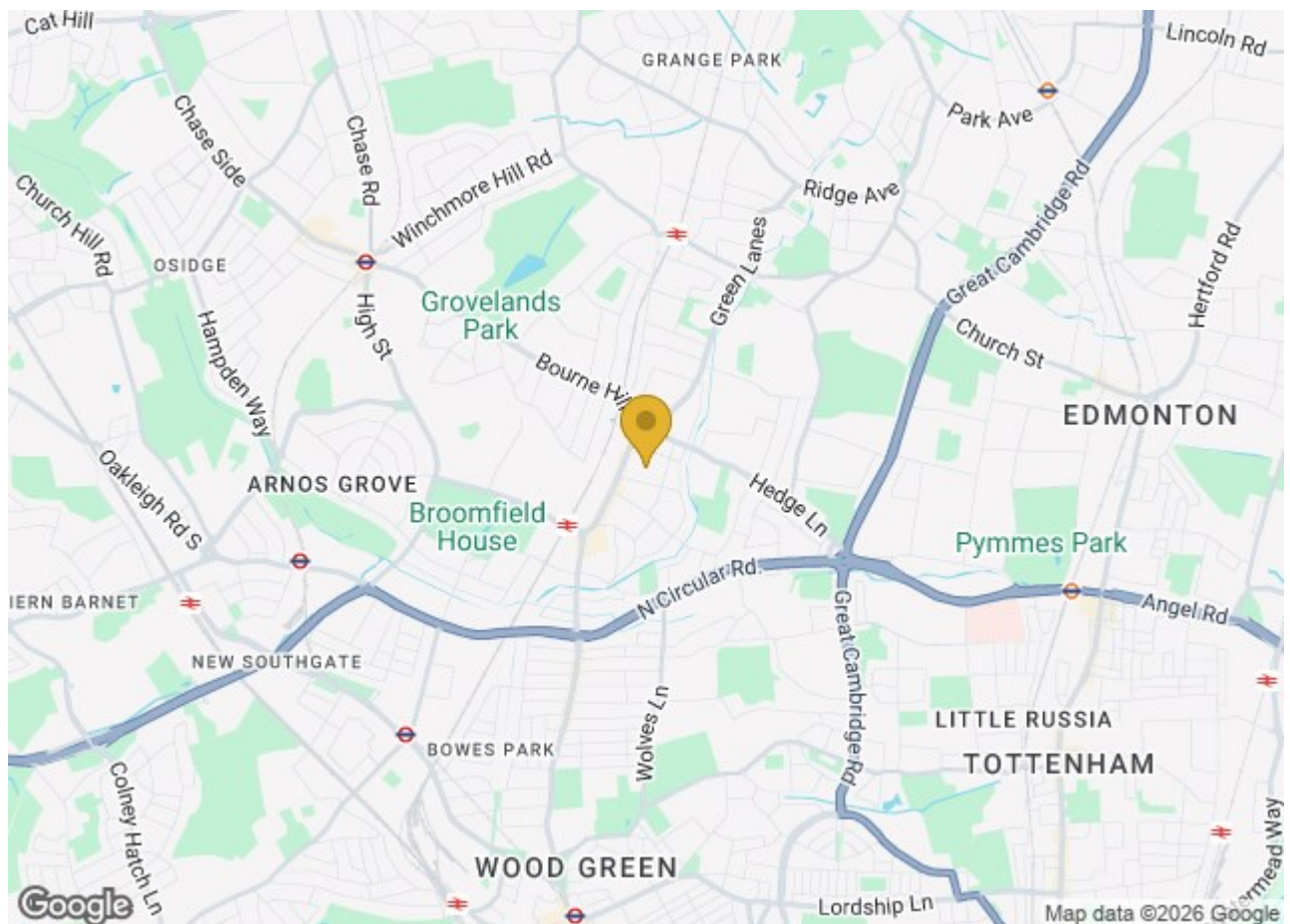
Please contact for more information - EARLY VIEWING ADVISED!

Windsor Road, London, N13

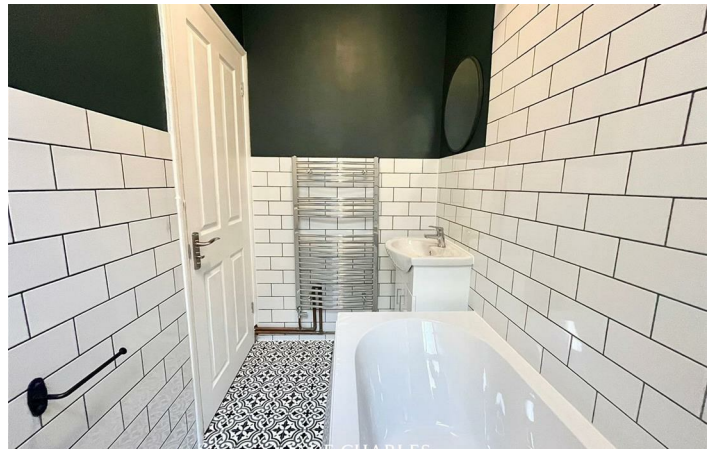
Price: £1500 PCM



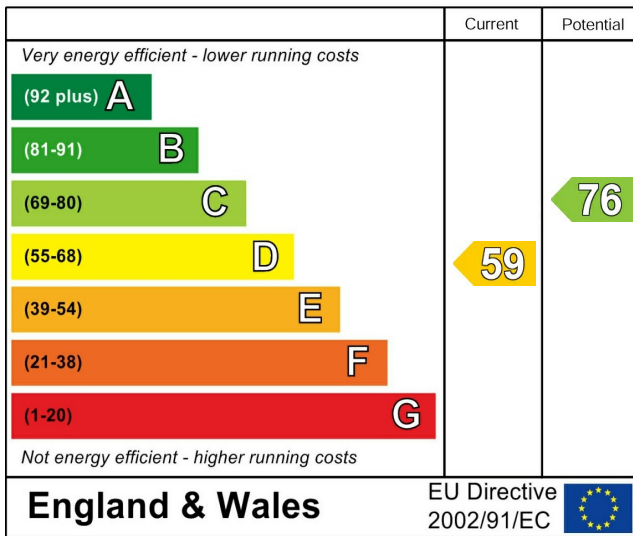
- Direct Access To Private Rear Patio & Garden
- Recently Refurbished Kitchen And Bathroom Fitted
- High Ceilings
- Located Close to Palmers Green BR and Bus Links
- Ground Floor
- Wooden Flooring
- Large Master Bedroom
- over 750 square feet Of Internal Living Space
- Separate Living Room
- Edwardian Conversion



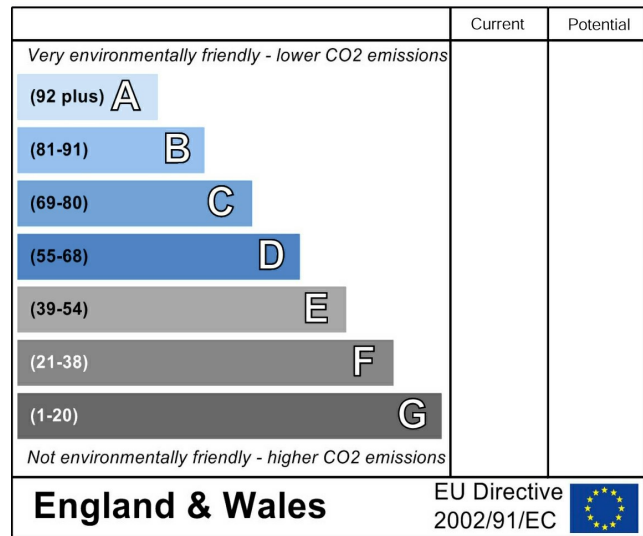
[Directions](#)



Energy Efficiency Rating



Environmental Impact (CO₂) Rating



These particulars, whilst believed to be accurate are set out as a general outline only for guidance and do not constitute any part of an offer or contract. Intending purchasers should not rely on them as statements of representation of fact, but must satisfy themselves by inspection or otherwise as to their accuracy. No person in this firm's employment has the authority to make or give any representation or warranty in respect of the property.