



Guide Price
£165,000

Freehold

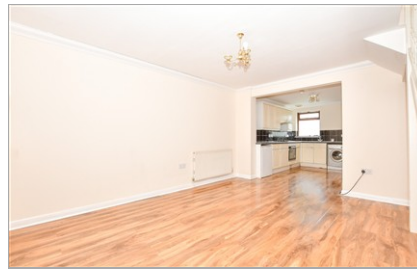
2x  1x  1x 

**Coronation Mews, Leed
Street, Sandown, Isle of
Wight, PO36**

OVER 60?

Secure this property
for up to **59% less!**

Pittis 
Helping you move forwards



Main features

- Great investment property or first time purchase
- Open plan lounge and kitchen
- Potential to enhance and modernise throughout
- Walking distance to the beaches and town centre
- Tucked away in a quiet location with low maintenance front garden

Accommodation

GROUND FLOOR

Entrance Hallway
 Lounge/Diner: 14'4 x 13'9 (4.37m x 4.19m)
 Kitchen: 11'1 x 7'9 (3.38m x 2.36m)
 Bathroom

FIRST FLOOR

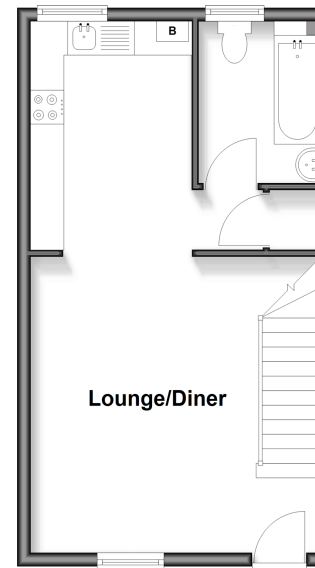
Landing
 Bedroom 1: 13'9 x 11'3 (4.19m x 3.43m)
 Bedroom 2: 10'9 x 10'5 (3.28m x 3.18m)

OUTSIDE

Front Garden

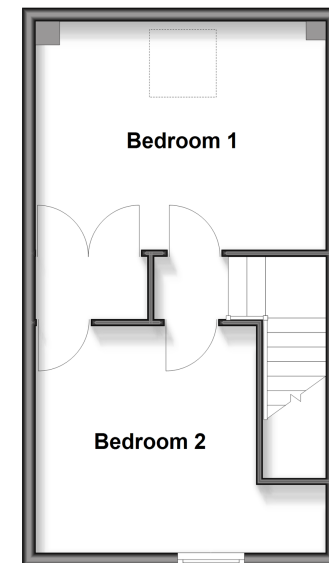
Ground Floor

Approx. 34.1 sq. metres (367.4 sq. feet)



First Floor

Approx. 34.1 sq. metres (367.4 sq. feet)



Call Sandown - 01983 407444 ■ pittis.co.uk

■ Through a Homewise Home For Life Plan people aged 60+ can secure this property for up to 59% less, by purchasing a Lifetime Lease



60519159/20260324/BB/CP